



Your Touchstone Energy® Cooperative 

The Touchstone Energy logo consists of three stylized human figures in red, blue, and orange, standing on a green base.

ORGANIZATIONAL CHART

As of

February 22, 2016

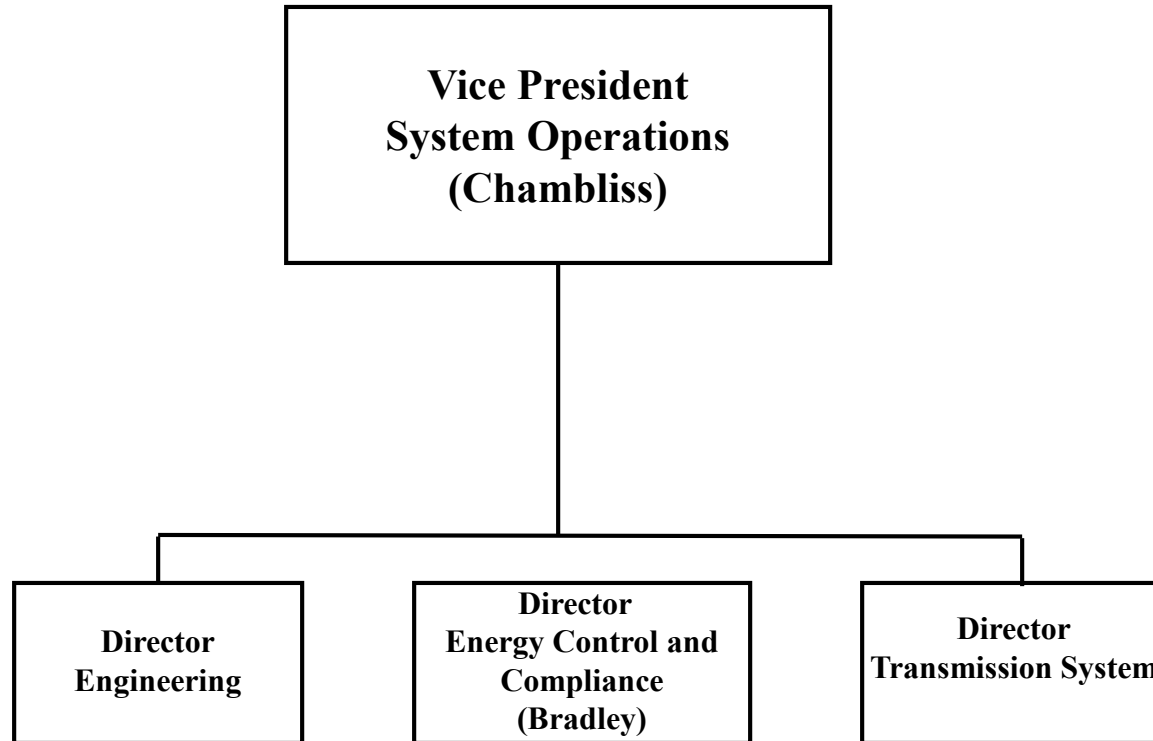
**BIG RIVERS
ELECTRIC CORPORATION
BOARD OF DIRECTORS**

President & CEO

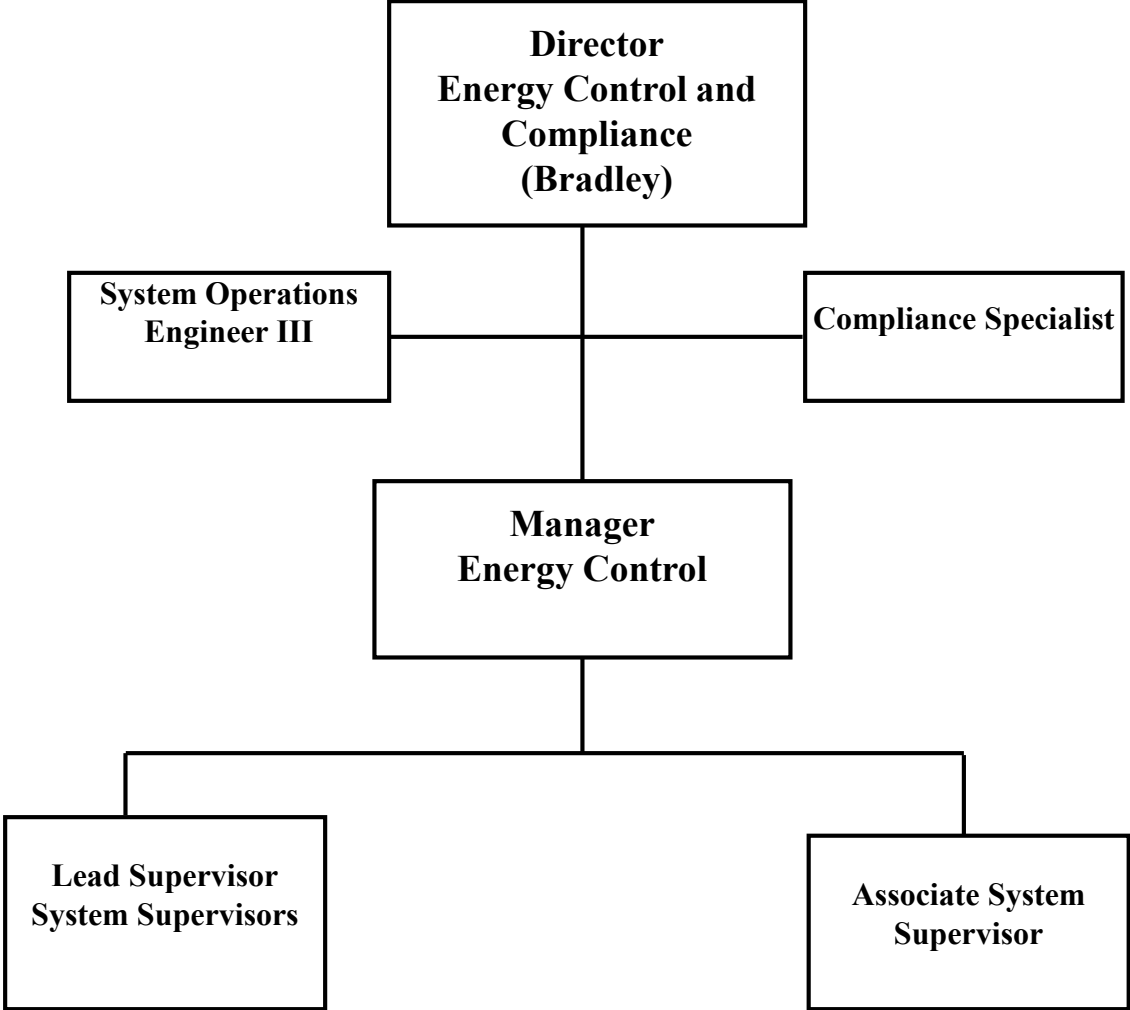
**VP System
Operations
(Chambliss)**

**VP Energy
Services**

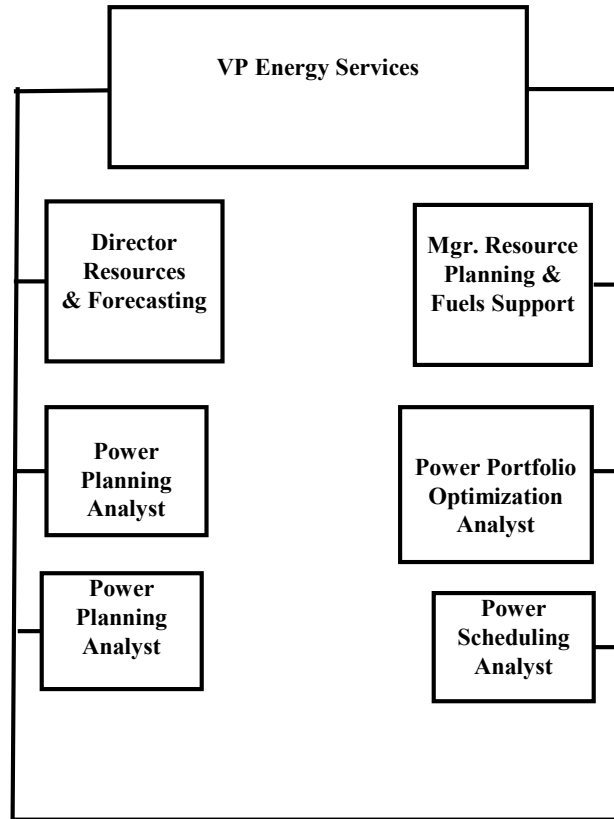
Transmission/Operations/Engineering



Operations/Compliance



Energy Services



Big Rivers Electric Corporation – Job Descriptions

President and CEO

Overall responsibility for corporate operations with no direct day-to-day participation in directing, organizing, or executing transmission system operations, reliability functions, or wholesale merchant functions.

VP System Operations

Overall responsibility for directing the activities of the Engineering, Energy Control, and Transmission Departments.

Responsible for the planning, designing, construction, and maintenance of the electric transmission system.

Overall responsibility for administrative functions associated with staffing, training, and equipping the Engineering, Transmission & Substation Maintenance, Energy Control, IT, and Real Estate areas with no direct day-to-day participation in directing, organizing, or executing transmission system operations, reliability functions, or wholesale merchant functions.

VP Energy Services

Responsibility for maintaining an adequate power supply to meet the distribution member load requirements.

Plans and develops the Corporation's power supply strategy.

Identifies and evaluates new wholesale power business opportunities.

Assesses competition in order to be aware of issues that affect the Corporation's efforts.

Monitors and evaluates industry marketing trends.

No direct participation in directing, organizing, or executing transmission system operations, reliability functions, or wholesale merchant functions.

Director Energy Control and Compliance and Staff

Responsibility for transmission system operations (Energy Control), transmission services, system reliability, local balancing area operations, interconnection agreements and contracts, and Chief Compliance Officer for Standards of Conduct.

Manager Energy Control

Manages the activities of the System Supervisors.

Responsible for transmission system reliability, providing transmission services to customers, local balancing area duties and coordination with MSIO, coordination of transmission system maintenance outages, and checkout of all paperwork, records, logs, etc.