



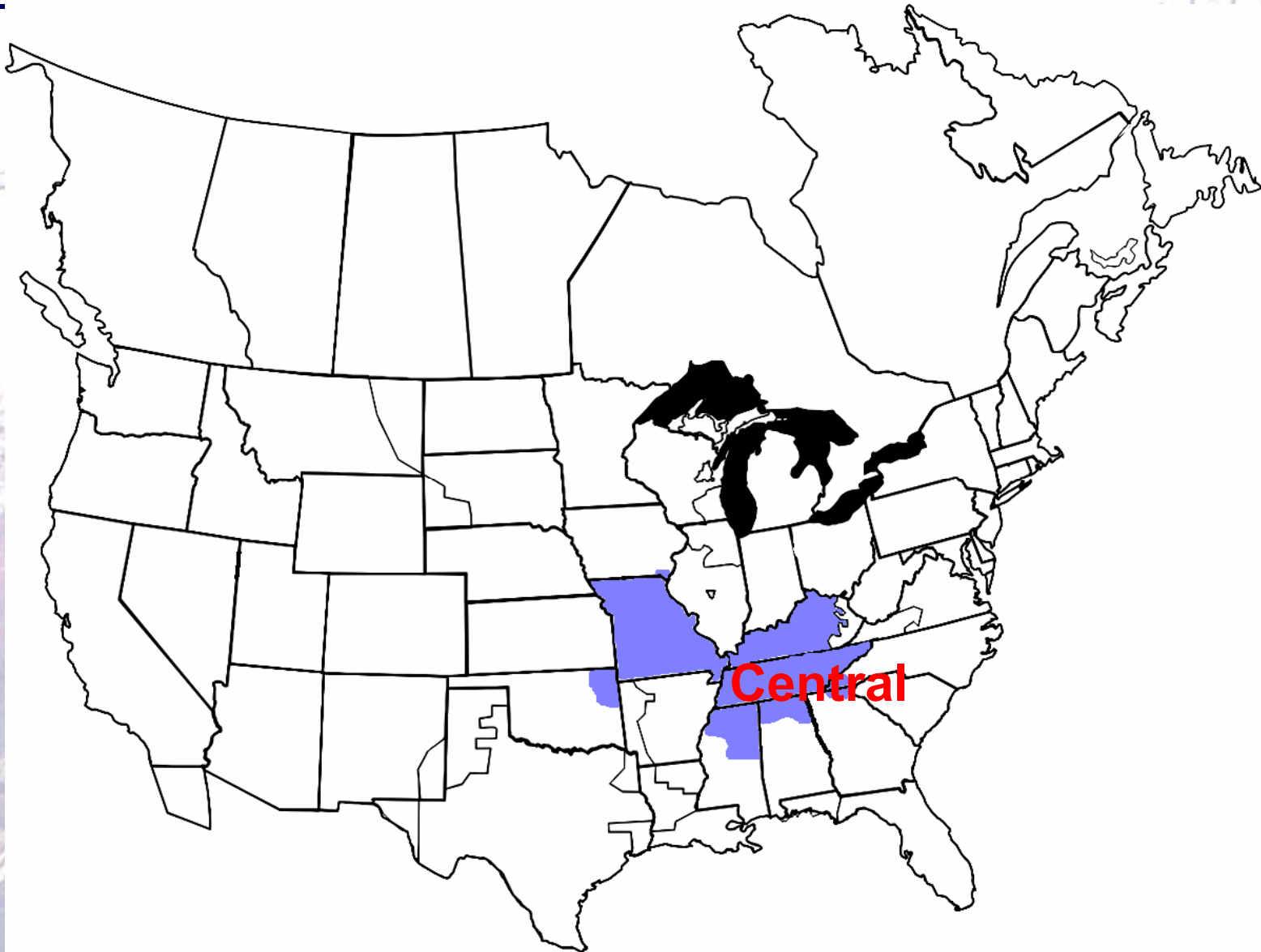
CENTRAL REGION Public Power Partners (CPPP)

FERC Order No. 890
Regional Technical Conference
October 2, 2007
David Till (bdtill@tva.gov)

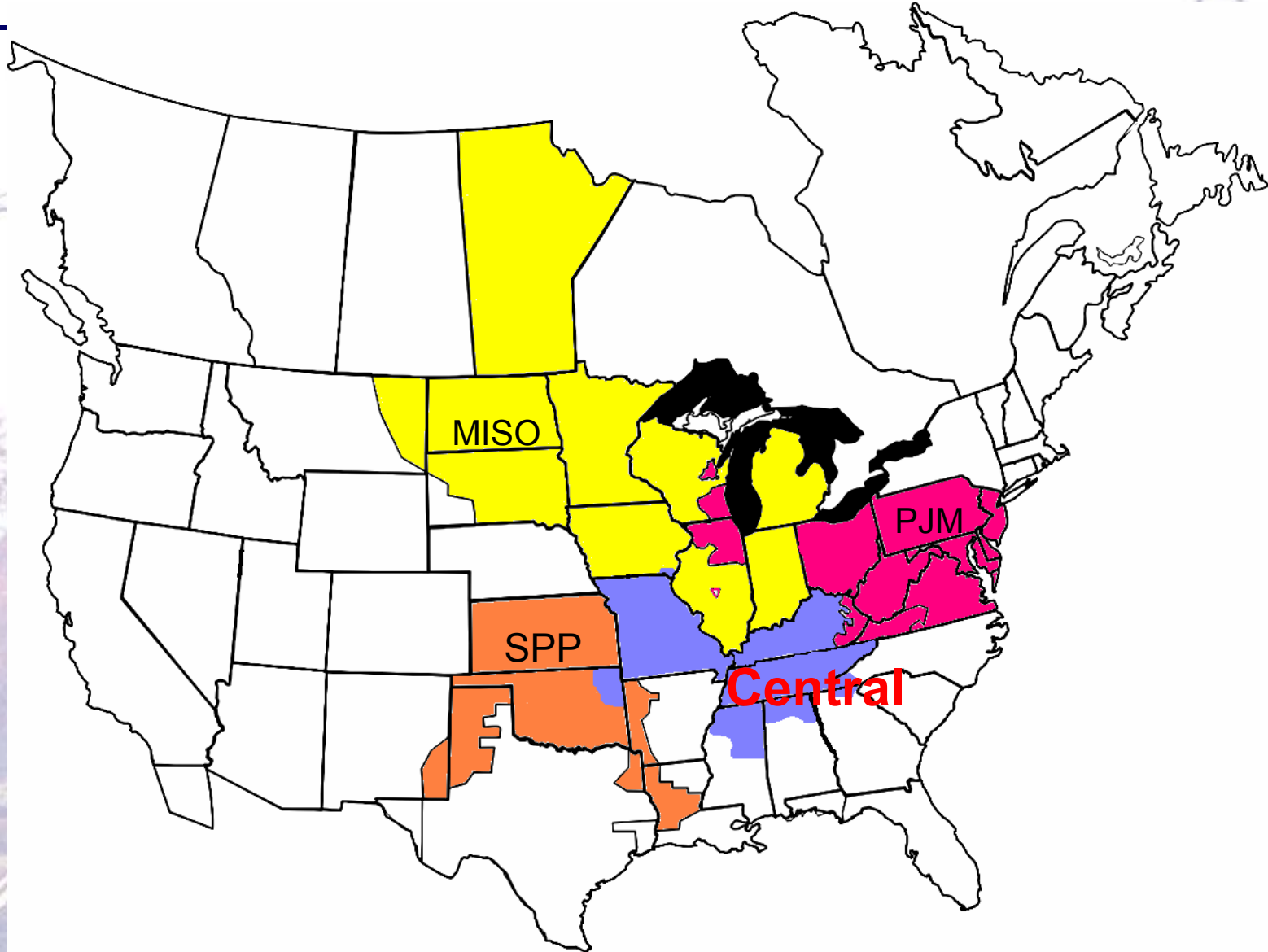
Purpose for Today

- Little Rock Conference urged broader regional participation to meet Order 890
- Atlanta Conference scheduled to allow stakeholder review of current state of regional process development
- AECI, BREC, EKPC, and TVA will participate collectively from a key grid position

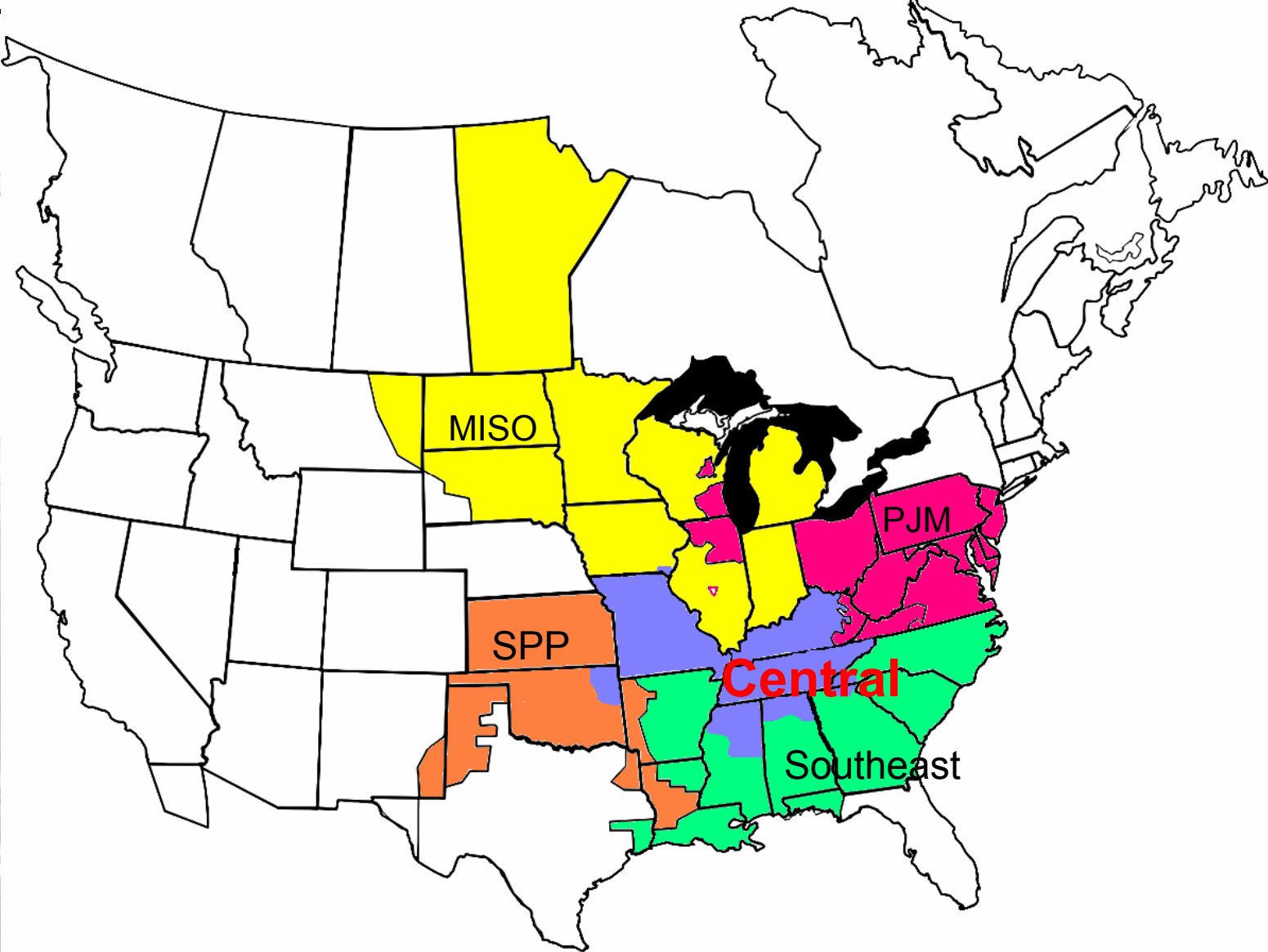
CPPP Area



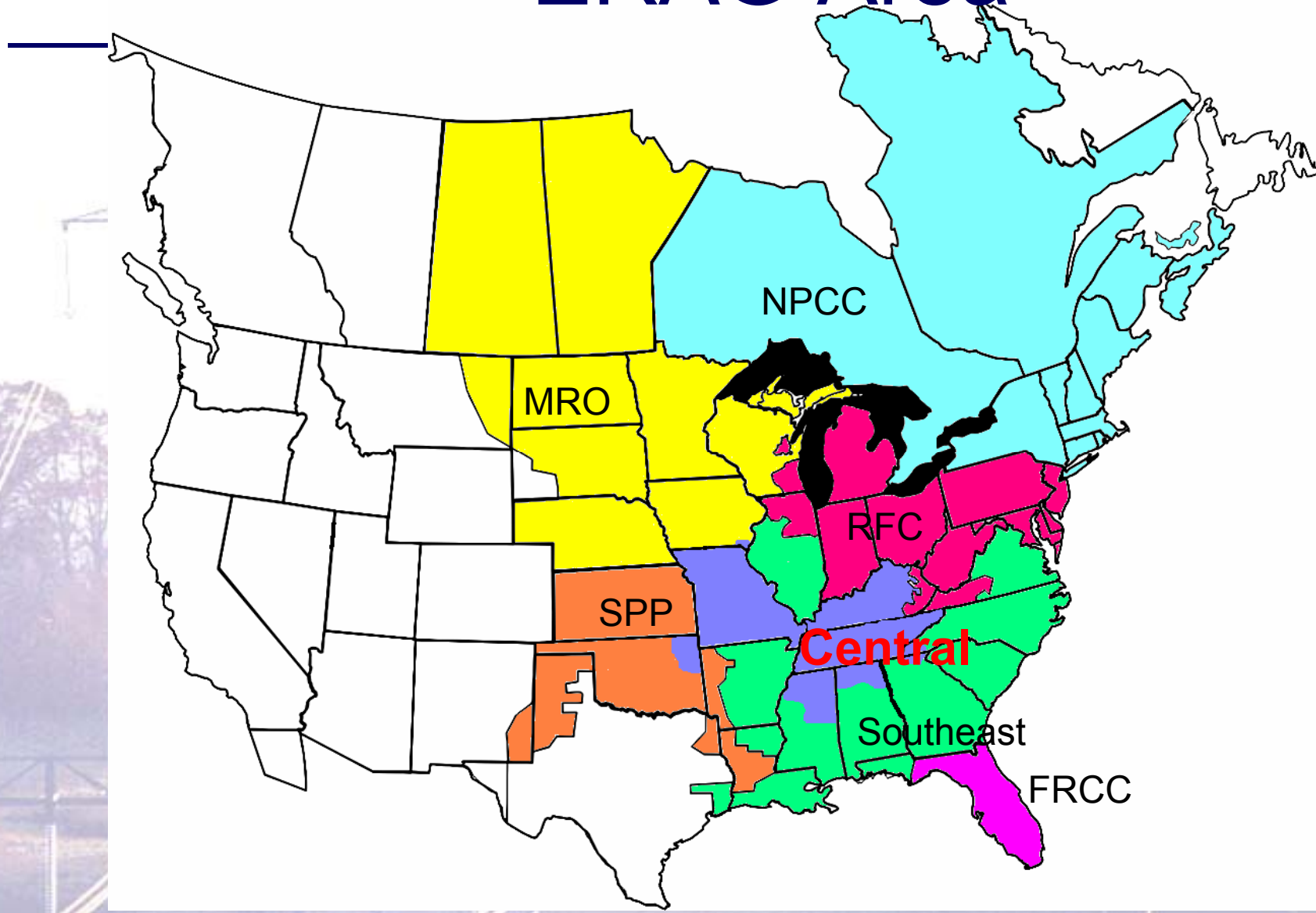
Plus SPP/PJM/MISO



Plus Southeast



ERAG Area



Scope of Participation

- Partners (CPPP) check simultaneous feasibility of reliability plans with the entire Eastern Interconnection (ERAG)
- CPPP will participate in economic and reliability studies ranging from Louisiana, Texas & Oklahoma to Montana & into Canada to New Jersey down the East Coast to the panhandle of Florida and back across the Gulf Coast through inter-regional agreements.

Inter-Regional Agreements

- JRCA with PJM/MISO integrated with MISO/SPP JOA in wide-area reliability and economic assessment
- This extends CPPP north and west
- This will incorporate long term plans including the TVA Pole Star 60 GW and SPP EHV Overlay
- First joint stakeholder meeting on Nov 1, 2007

Inter-Regional Agreements

- CPPP will participate in the Southeastern Inter-Regional Process
- This extends CPPP east and south

CPPP Regional Process

- TVA, BREC, EKPC, AECI will establish common stakeholder group for CPPP regional planning – 1st meeting Nov 14
- Full requirements customers, public service commissions, IPP's, transmission customers, and peer transmission providers invited - open to all Eligible Customers

CPPP Process

- Processes will be developed with stakeholder input
- Annual Regional Transmission Assessment model, assumptions, preliminary solutions, final expansion plan open to stakeholders
- 5 stakeholder-requested economic studies/year without charge – additional studies if funded
- Inter-Regional processes allow very large area or seams studies

by December 7

- Regional planning refined (Attachment K equivalent)
- Stakeholder processes defined and implemented
- First annual Regional Transmission Assessment model stakeholder access scheduled (March 1)
- Continuing participation in ERAG, PJM/MISO/SPP, and Southeastern processes