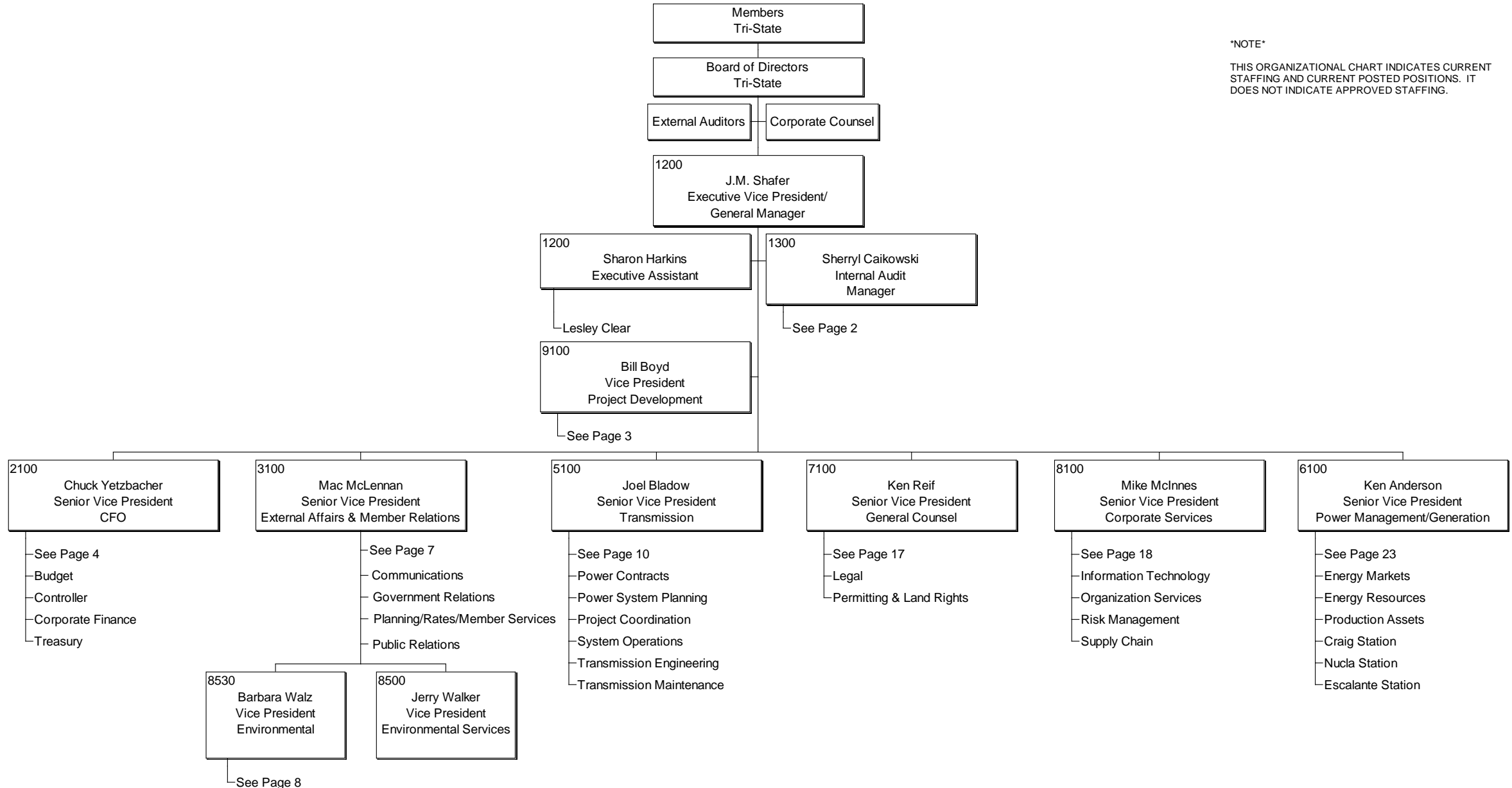


TRI-STATE GENERATION AND TRANSMISSION ASSOCIATION, INC ORGANIZATION STRUCTURE

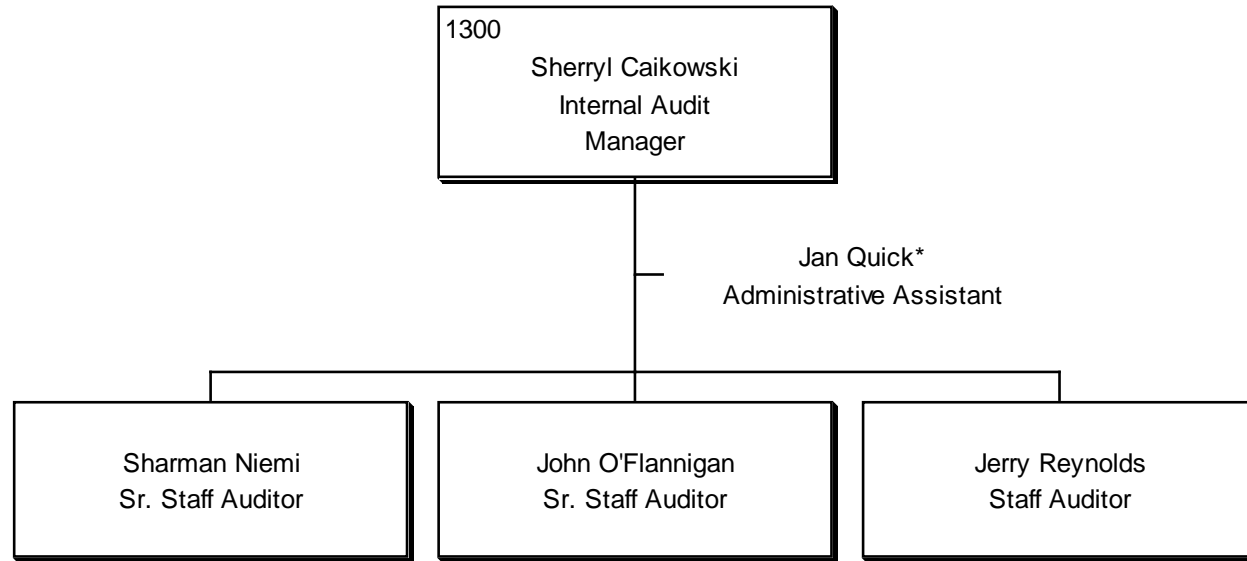
Last Modified 8/24/2007

NOTE

THIS ORGANIZATIONAL CHART INDICATES CURRENT STAFFING AND CURRENT POSTED POSITIONS. IT DOES NOT INDICATE APPROVED STAFFING.

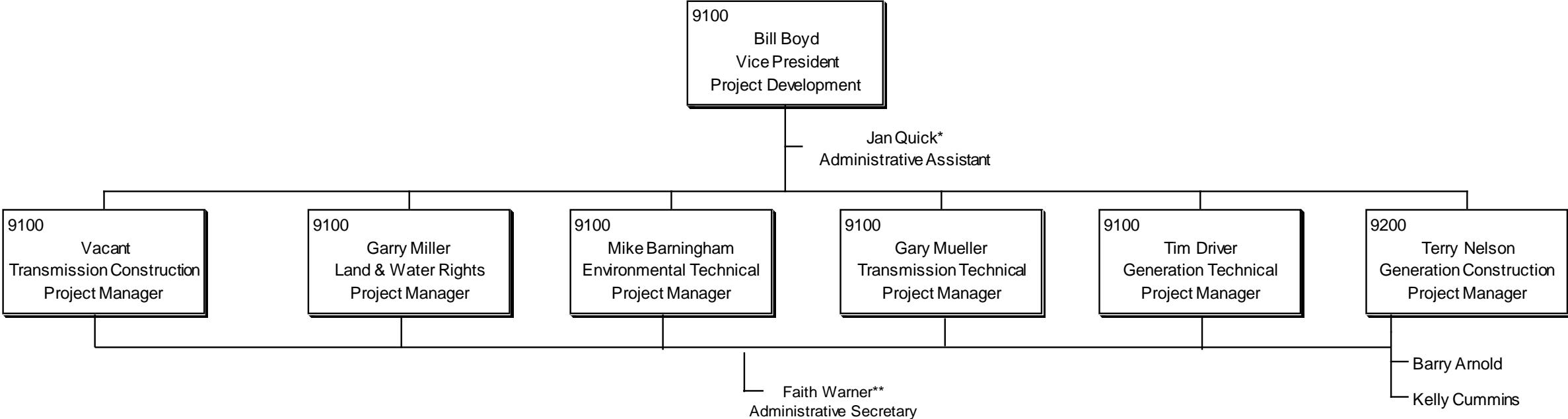


INTERNAL AUDIT
ORGANIZATION STRUCTURE



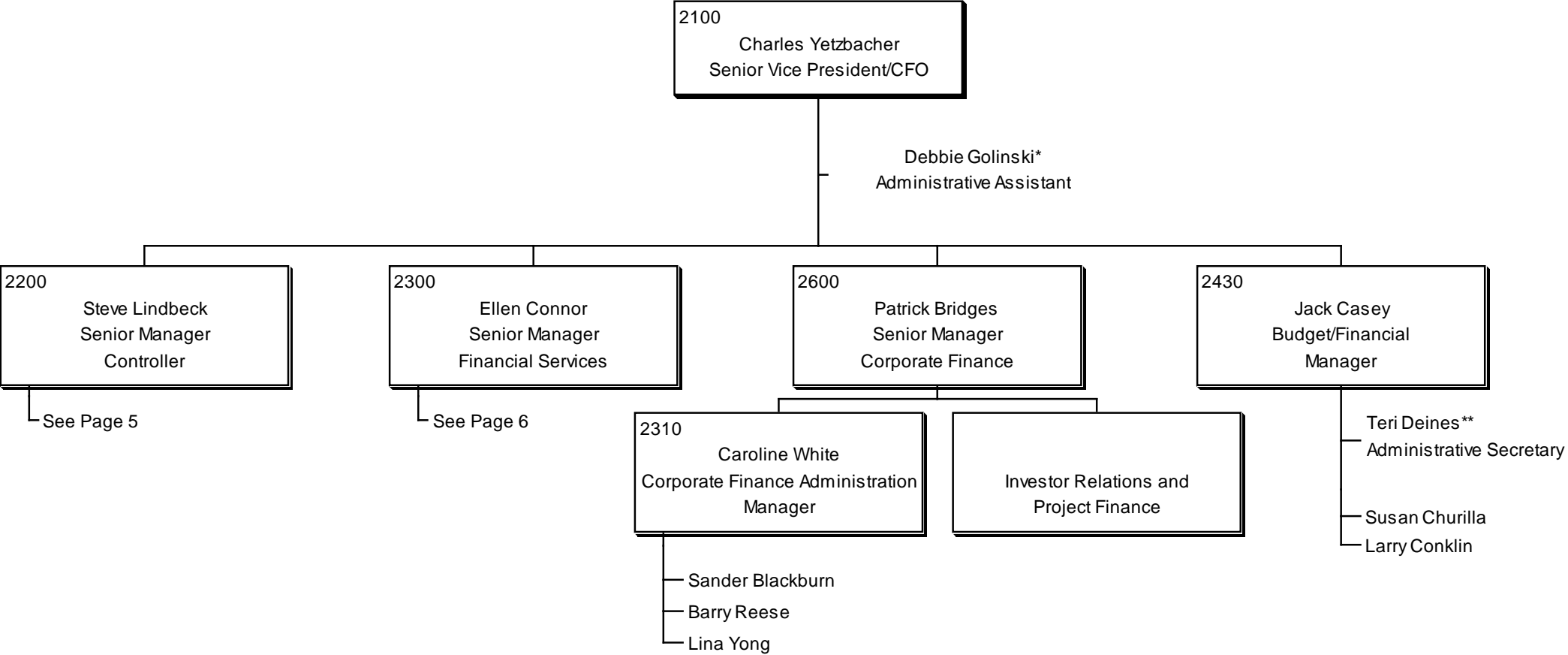
* Also supports Sr. Vice President, Power Management & Generation, Sr. Vice President, Transmission, and Vice President, Project Development

PROJECT DEVELOPMENT
ORGANIZATION STRUCTURE



* Also supports Sr. Vice President, Power Management & Generation, Sr. Vice President, Transmission and Internal Audit Manager
**Also supports Public Relations Manager

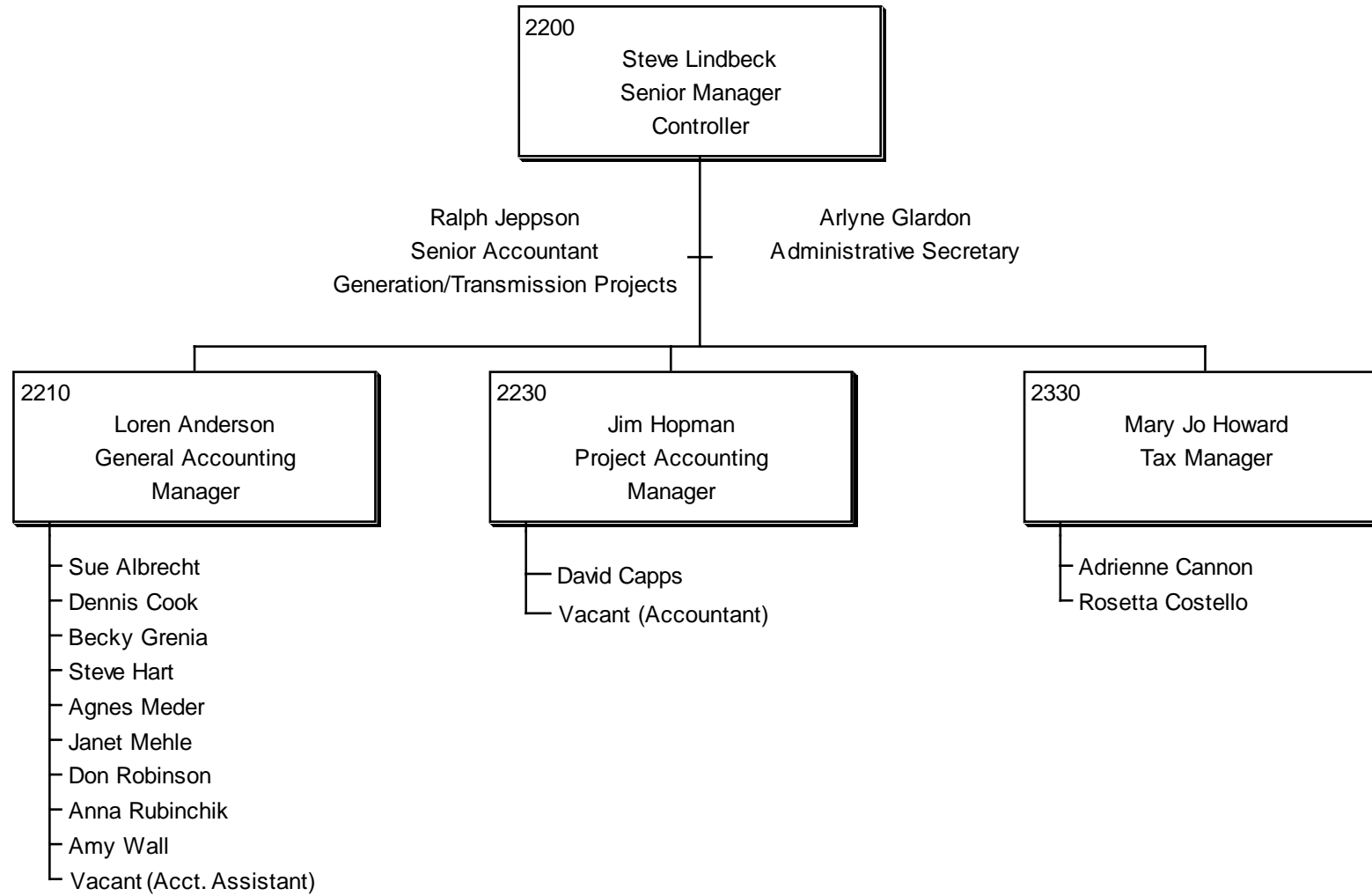
FINANCE & ACCOUNTING
ORGANIZATION STRUCTURE



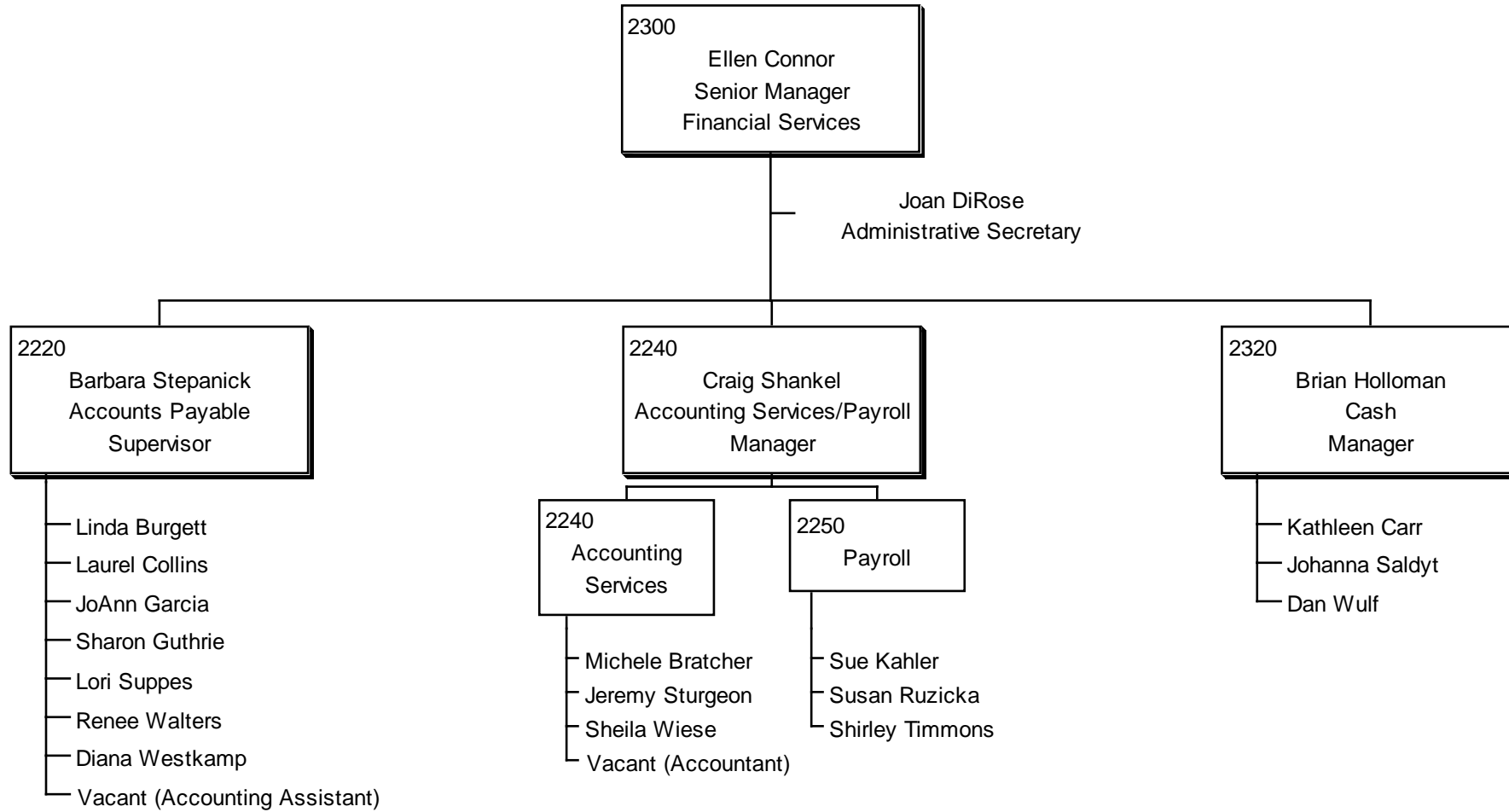
* Also supports Senior Vice President, General Counsel and Vice President, Environmental Services

**Also supports Facilities Manager

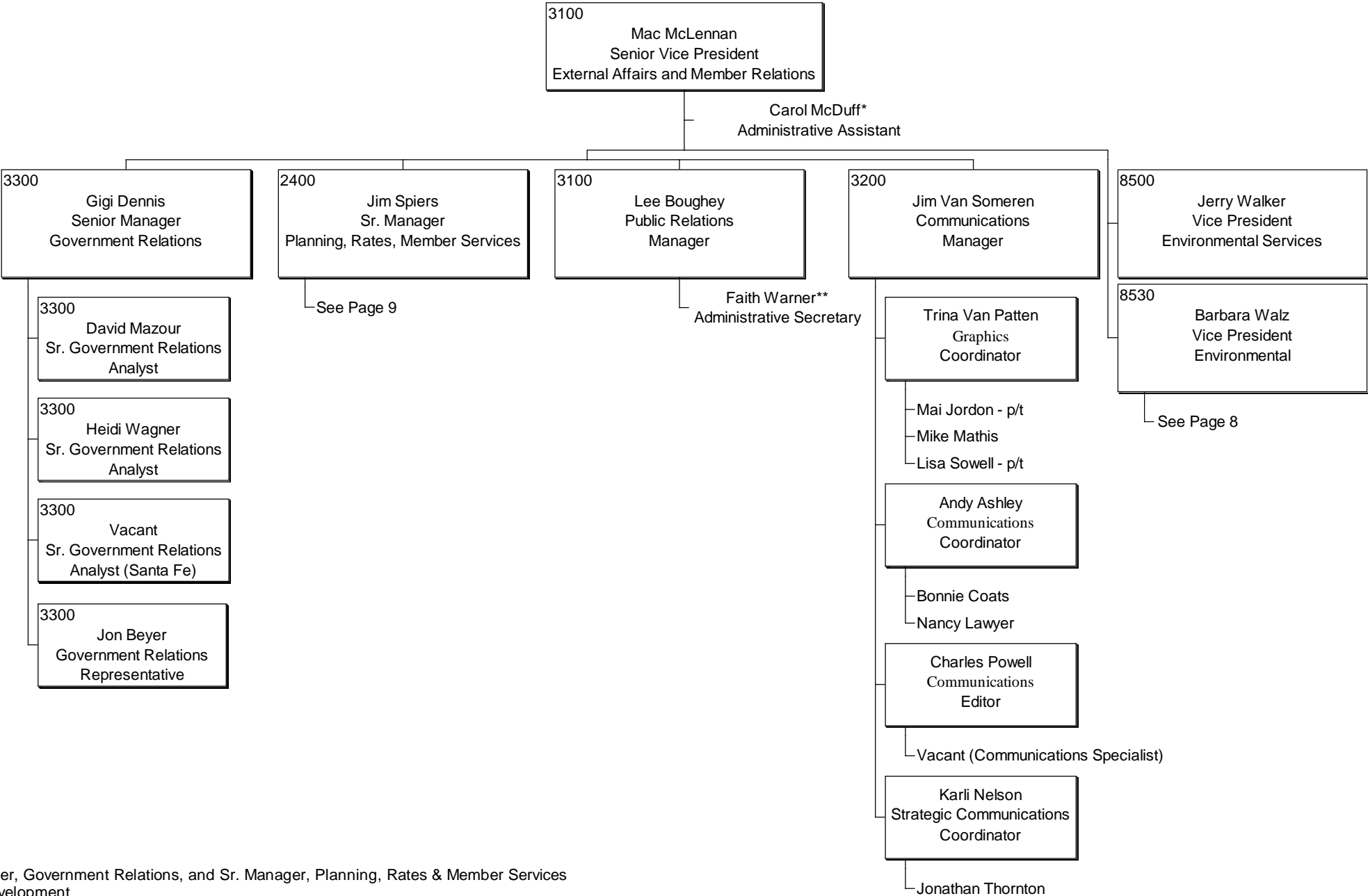
CONTROLLER
ORGANIZATION STRUCTURE



FINANCE
ORGANIZATION STRUCTURE

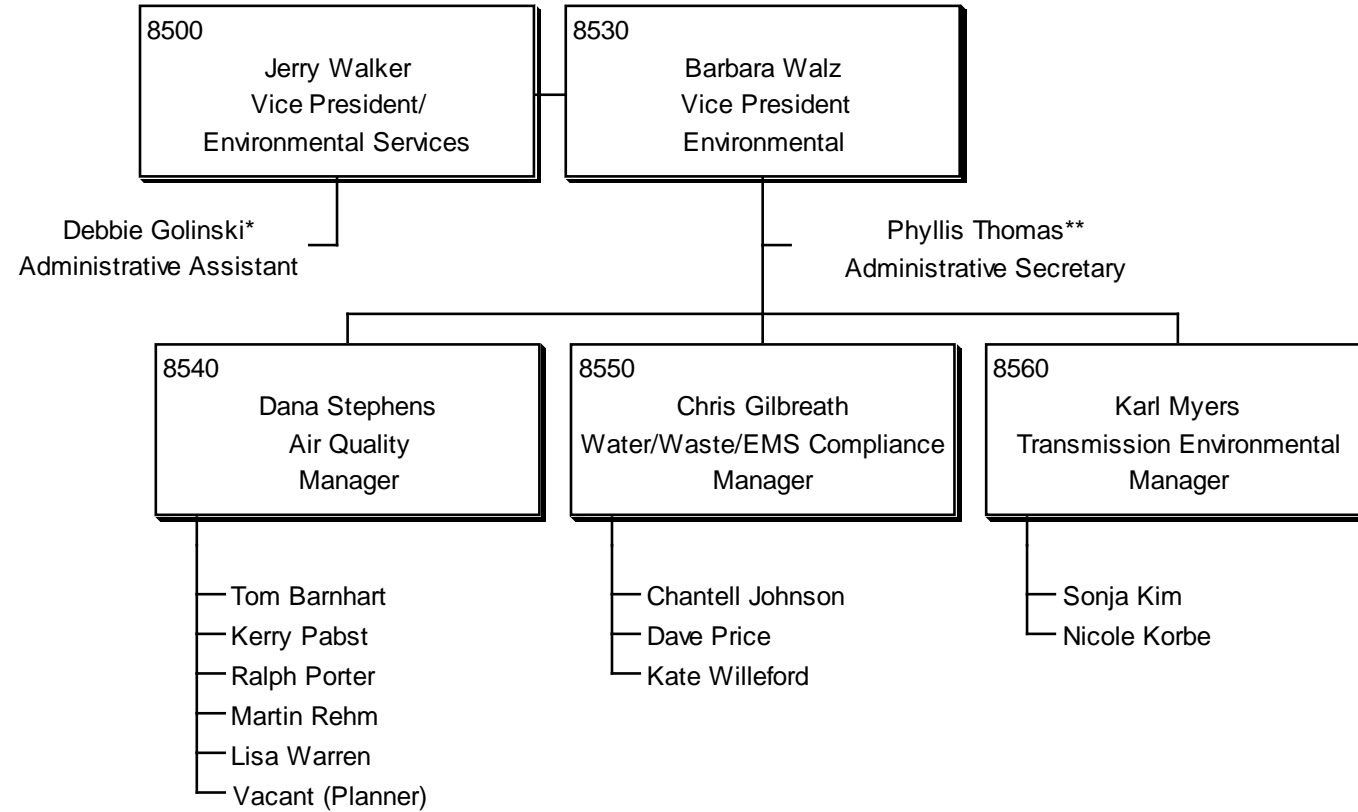


EXTERNAL AFFAIRS ORGANIZATION STRUCTURE



* Also supports Sr. Manager, Government Relations, and Sr. Manager, Planning, Rates & Member Services
 ** Also supports Project Development
 p/t=part-time

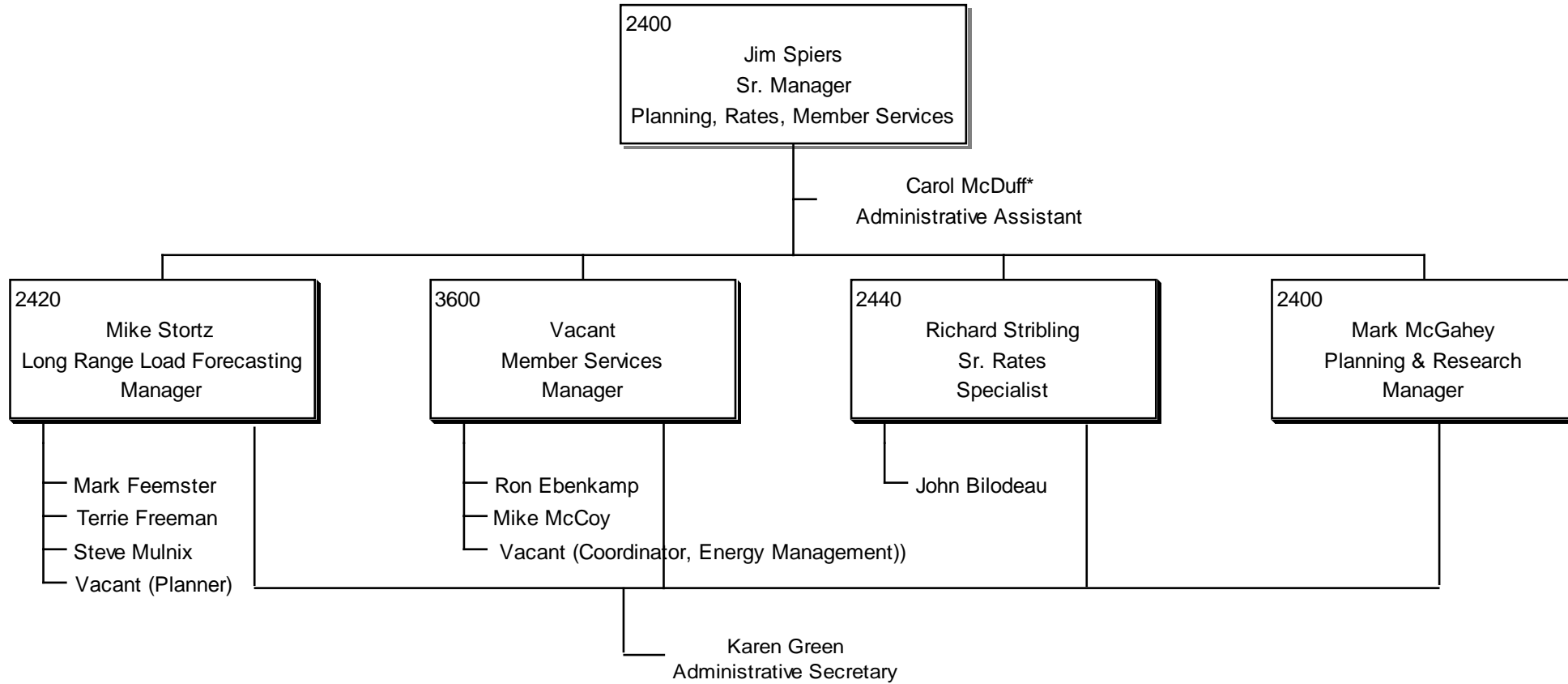
ENVIRONMENTAL SERVICES
ORGANIZATION CHART



* Also supports Sr. Vice President, CFO; Sr. Vice President, General Council; and Sr. Manager, Corporate Finance

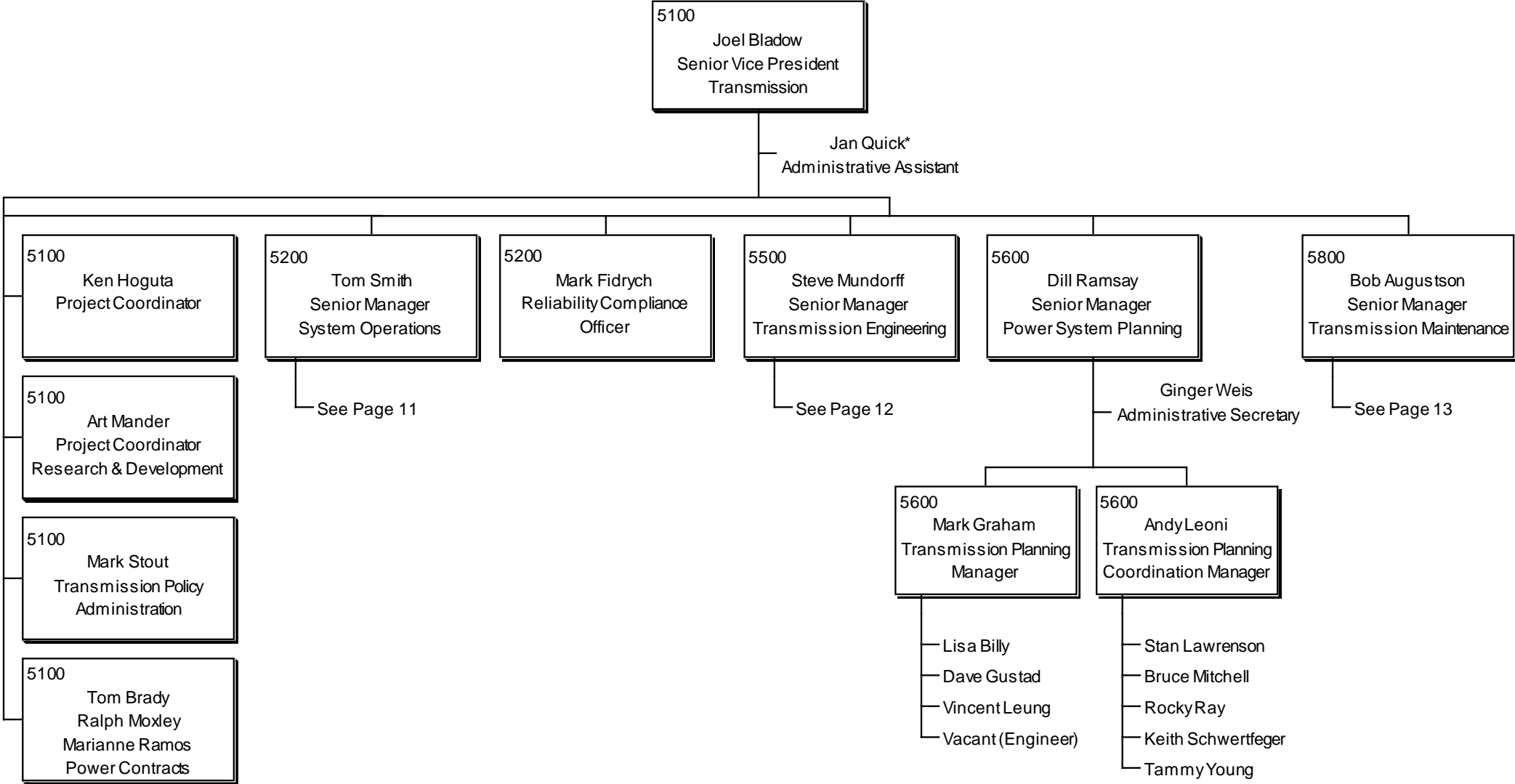
** Also supports Safety/Insurance Manager

PLANNING, RATES, MEMBER SERVICES
ORGANIZATION STRUCTURE



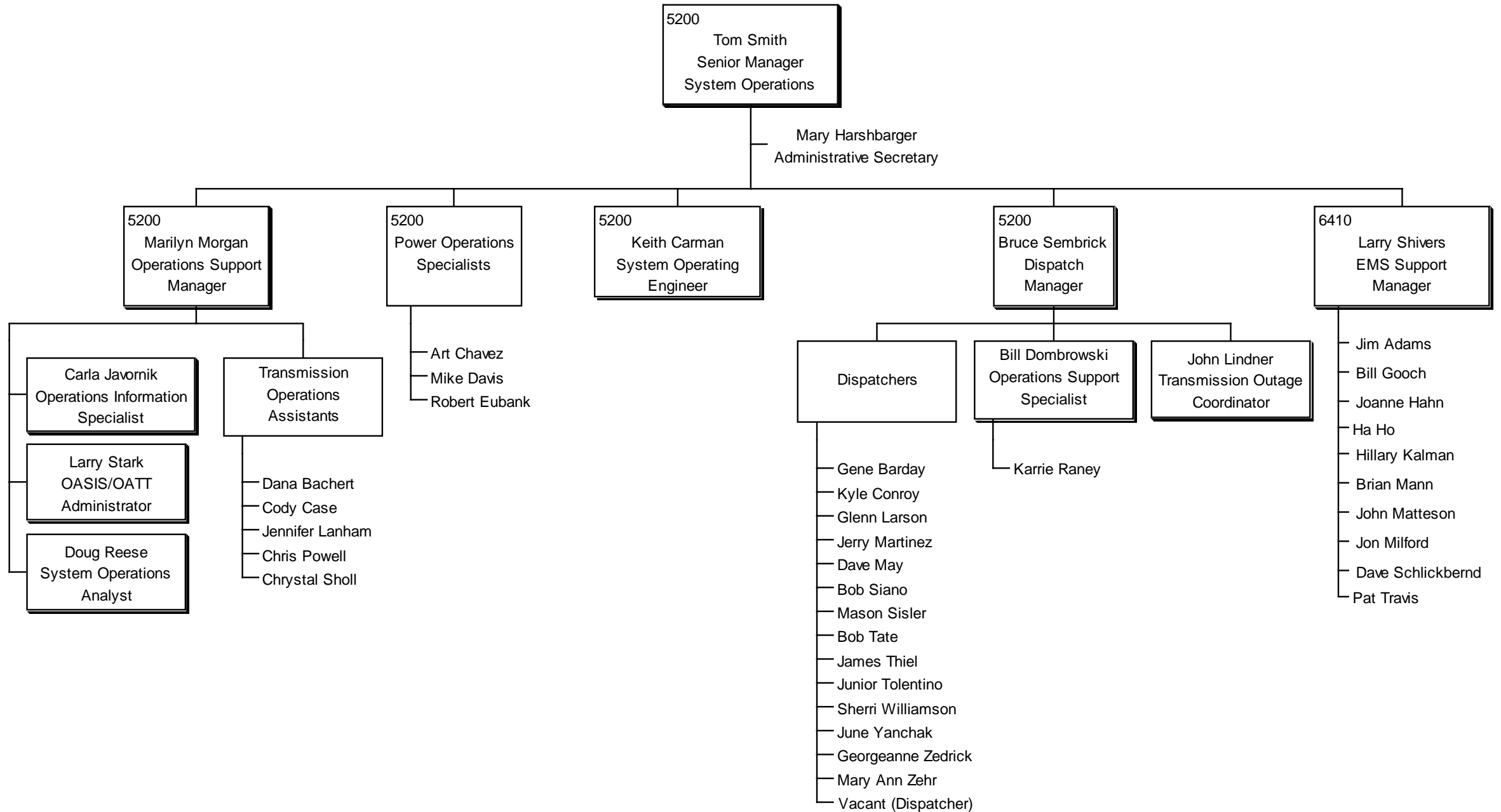
* Also supports Sr. Vice President, External Affairs and Member Relations, and Sr. Manager, Government Relations

TRANSMISSION
ORGANIZATION STRUCTURE

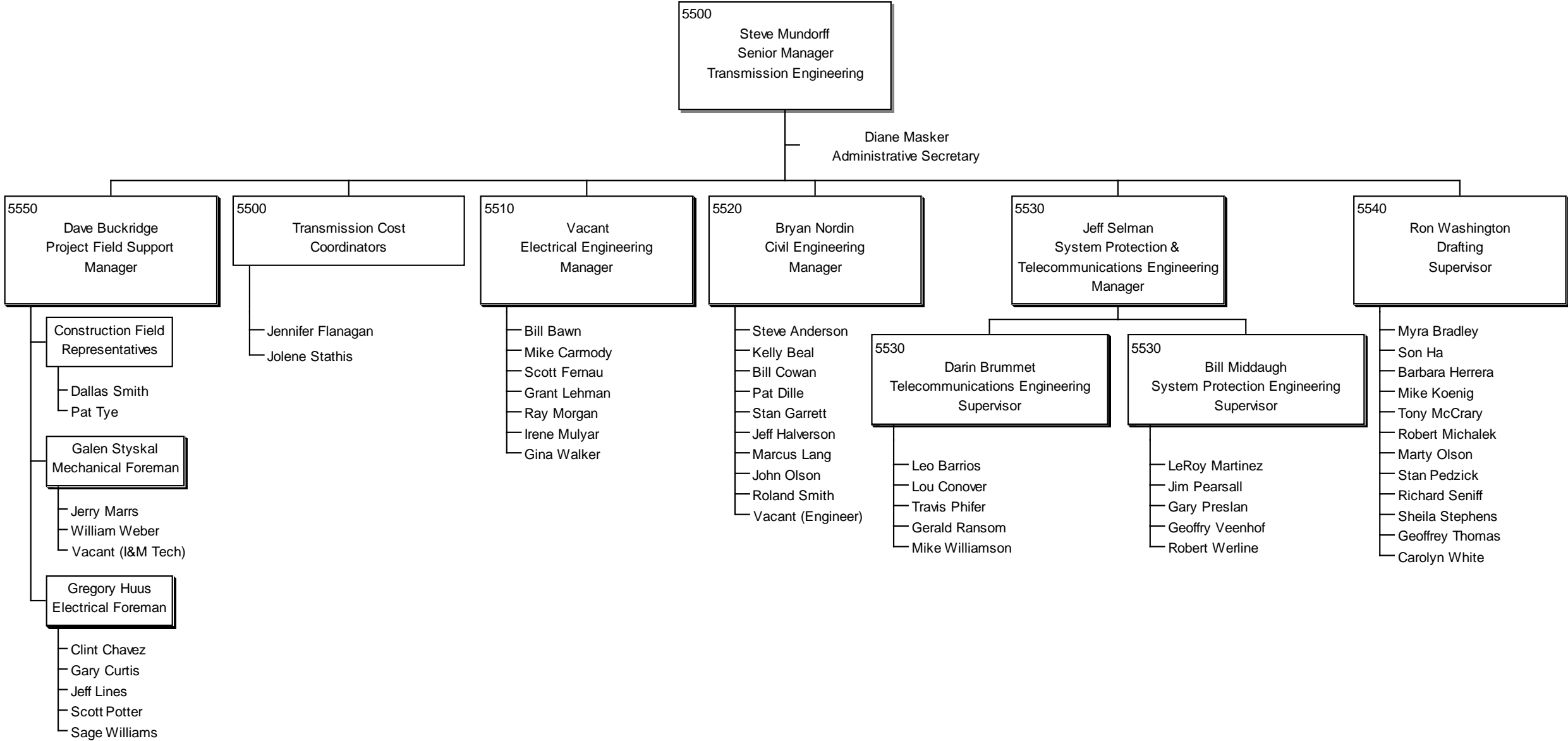


* Also supports Senior Vice President, Power Management & Generation, Vice President, Project Development and Internal Audit Manager

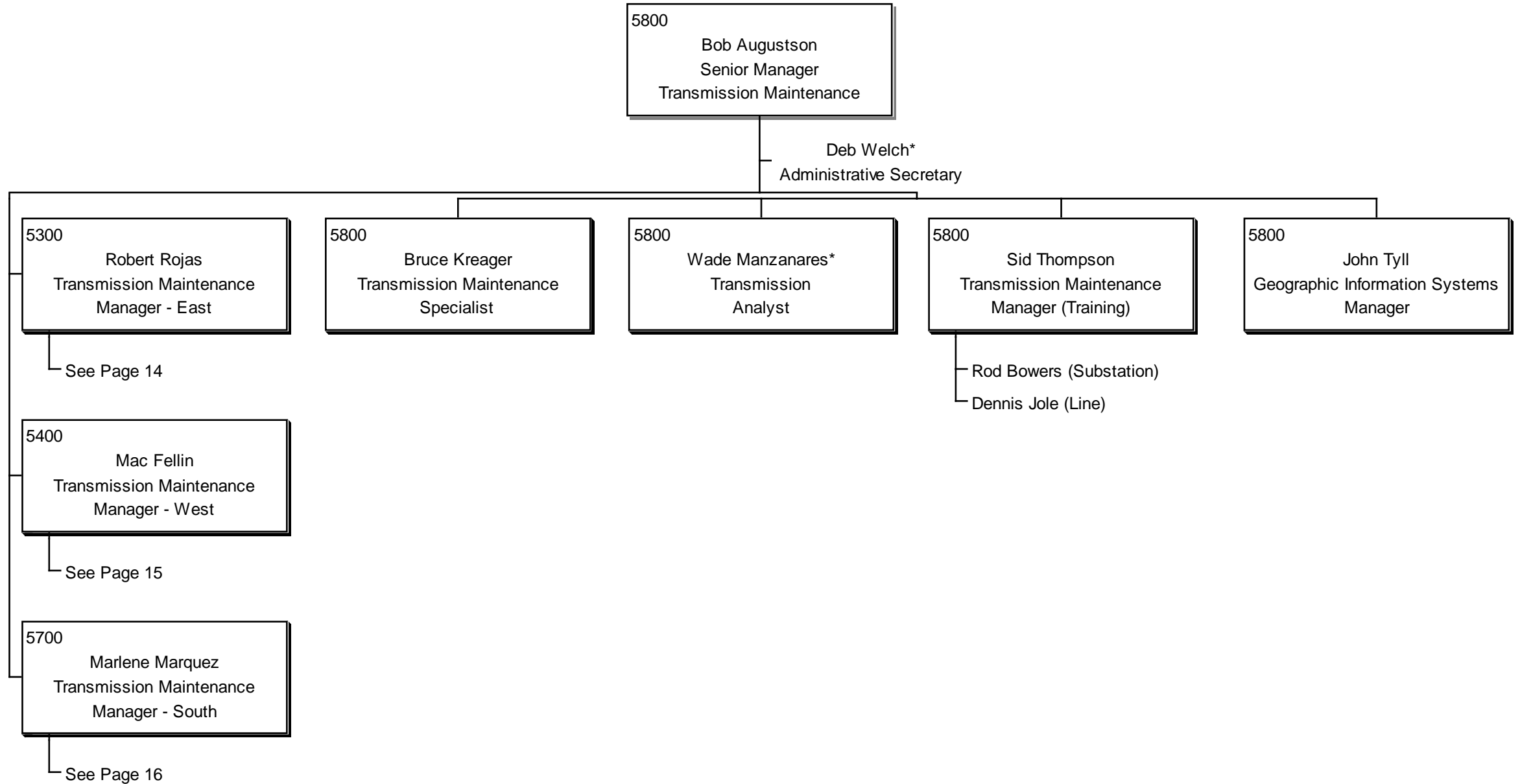
SYSTEM OPERATIONS
ORGANIZATION STRUCTURE



TRANSMISSION ENGINEERING ORGANIZATION STRUCTURE

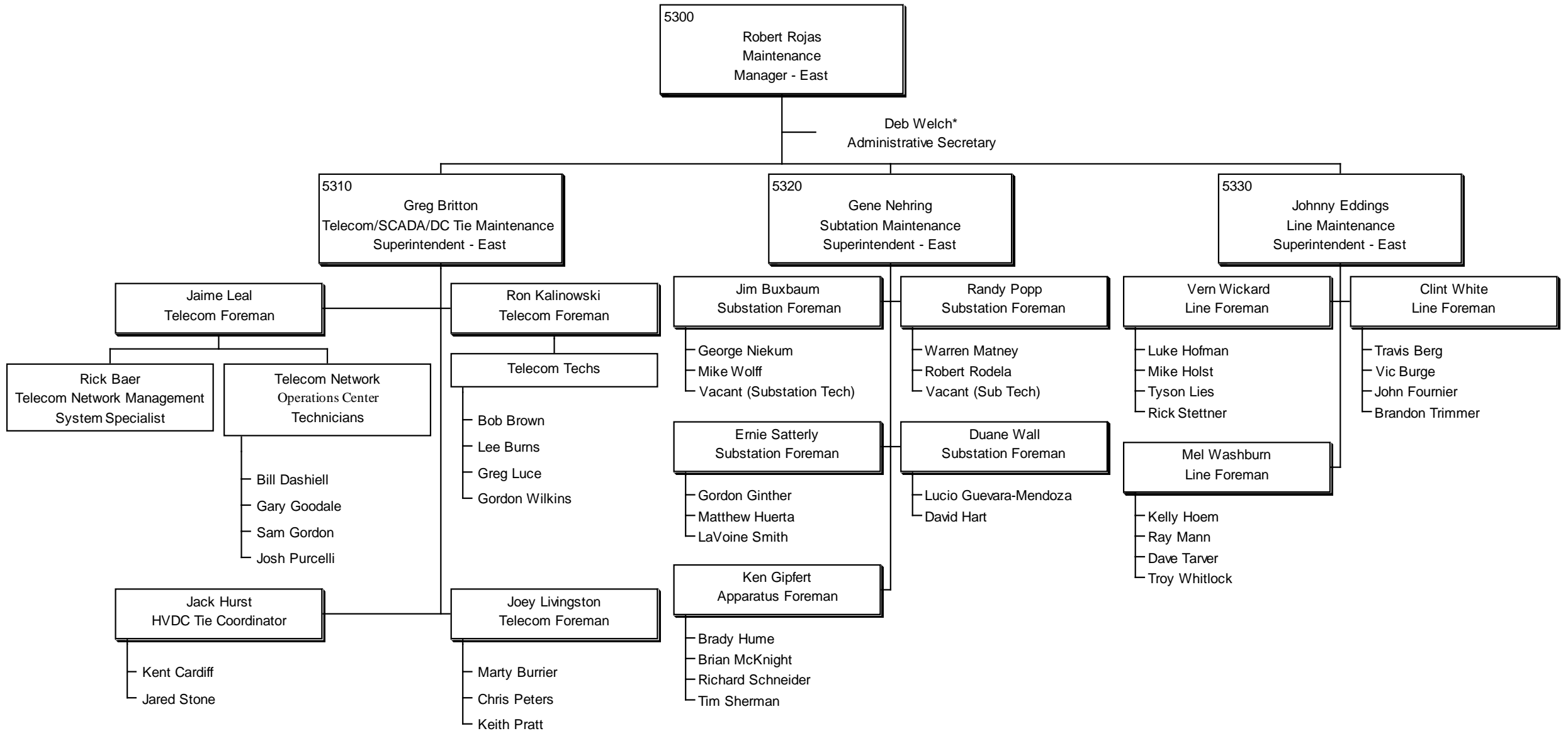


TRANSMISSION & MAINTENANCE
ORGANIZATIONAL STRUCTURE



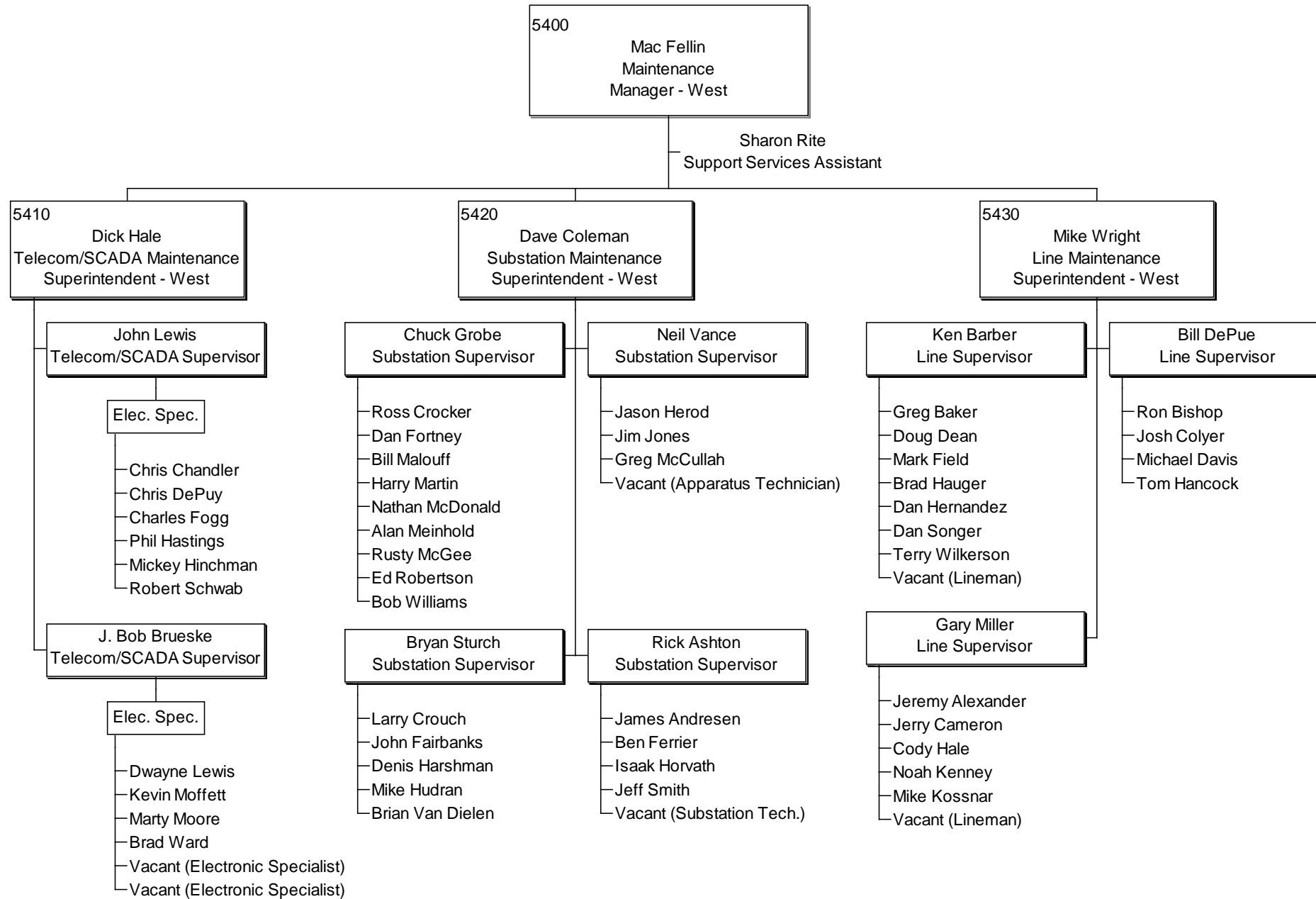
* Also supports Transmission Maintenance Manager - East

TRANSMISSION MAINTENANCE - EAST ORGANIZATION STRUCTURE



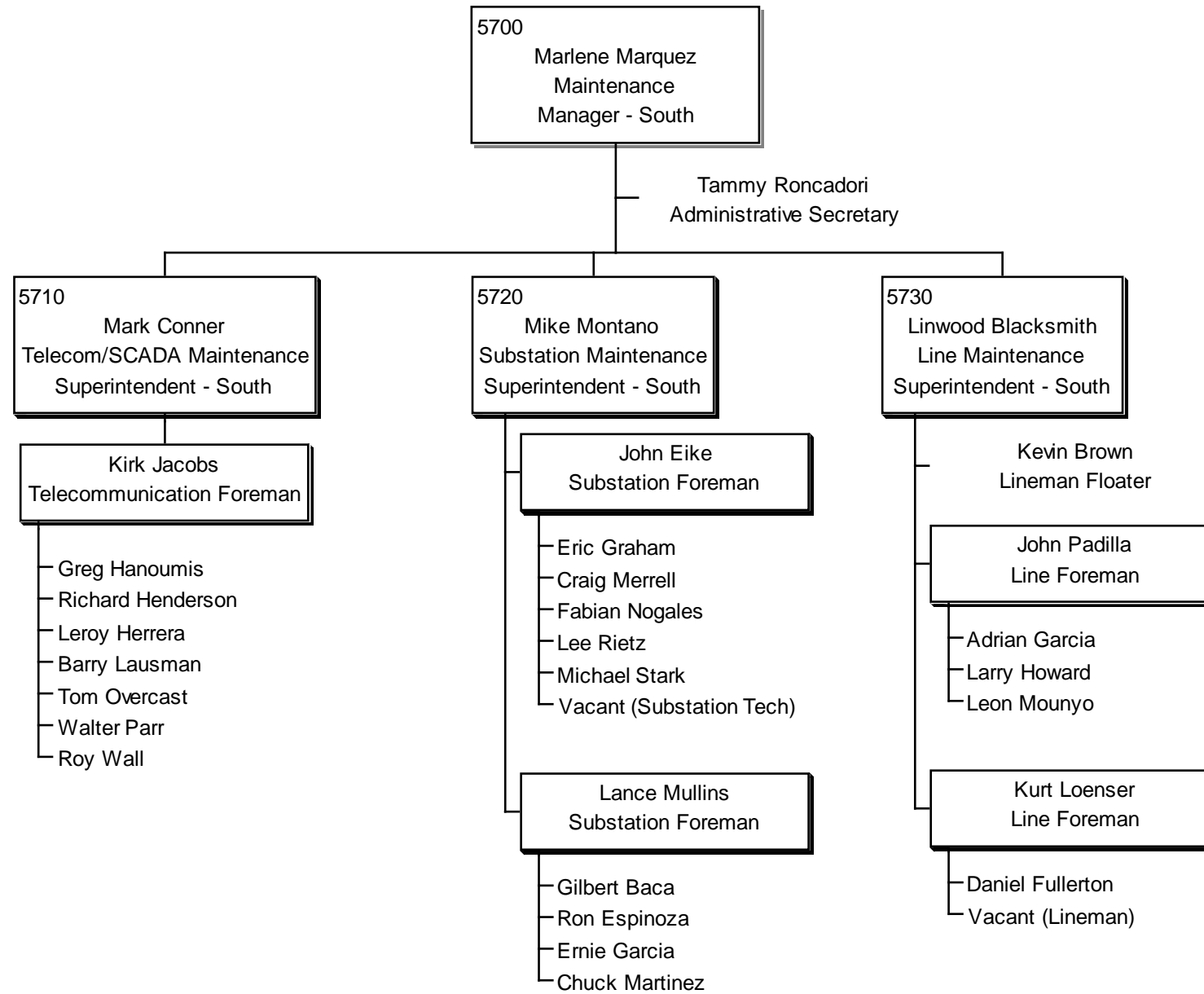
*Also supports Sr. Manager, Transmission & Maintenance

TRANSMISSION MAINTENANCE - WEST ORGANIZATION STRUCTURE

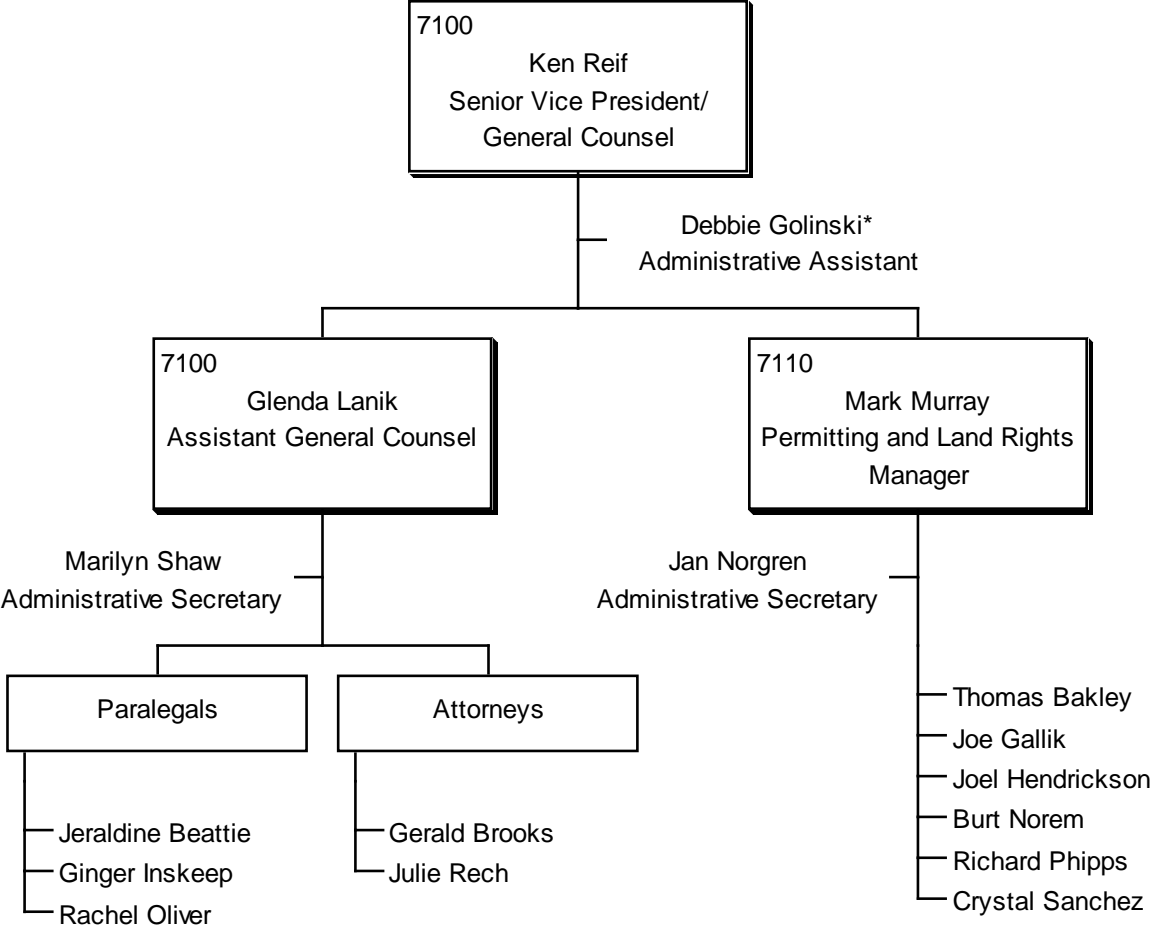


*Also supports Transmission Maintenance Manager-East and Transmission Maintenance Manager-South

TRANSMISSION MAINTENANCE - SOUTH
ORGANIZATION STRUCTURE

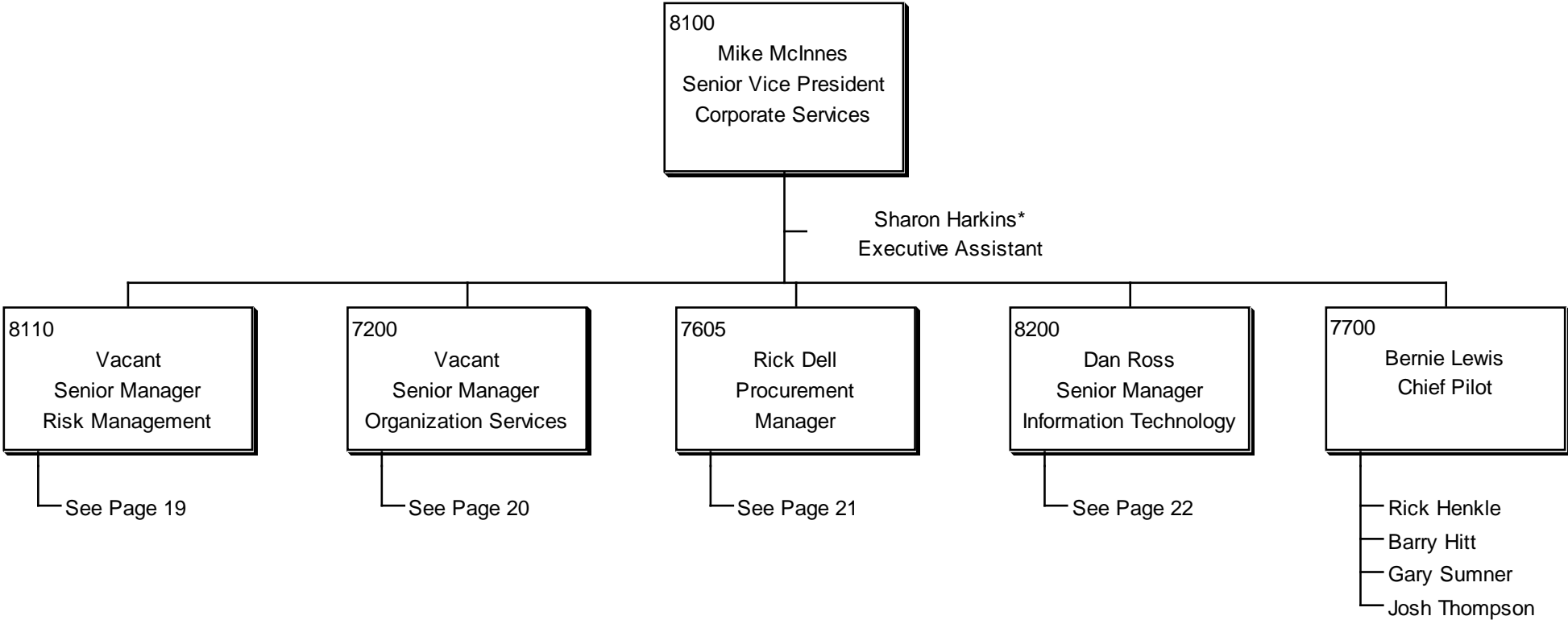


GENERAL COUNSEL
ORGANIZATION STRUCTURE



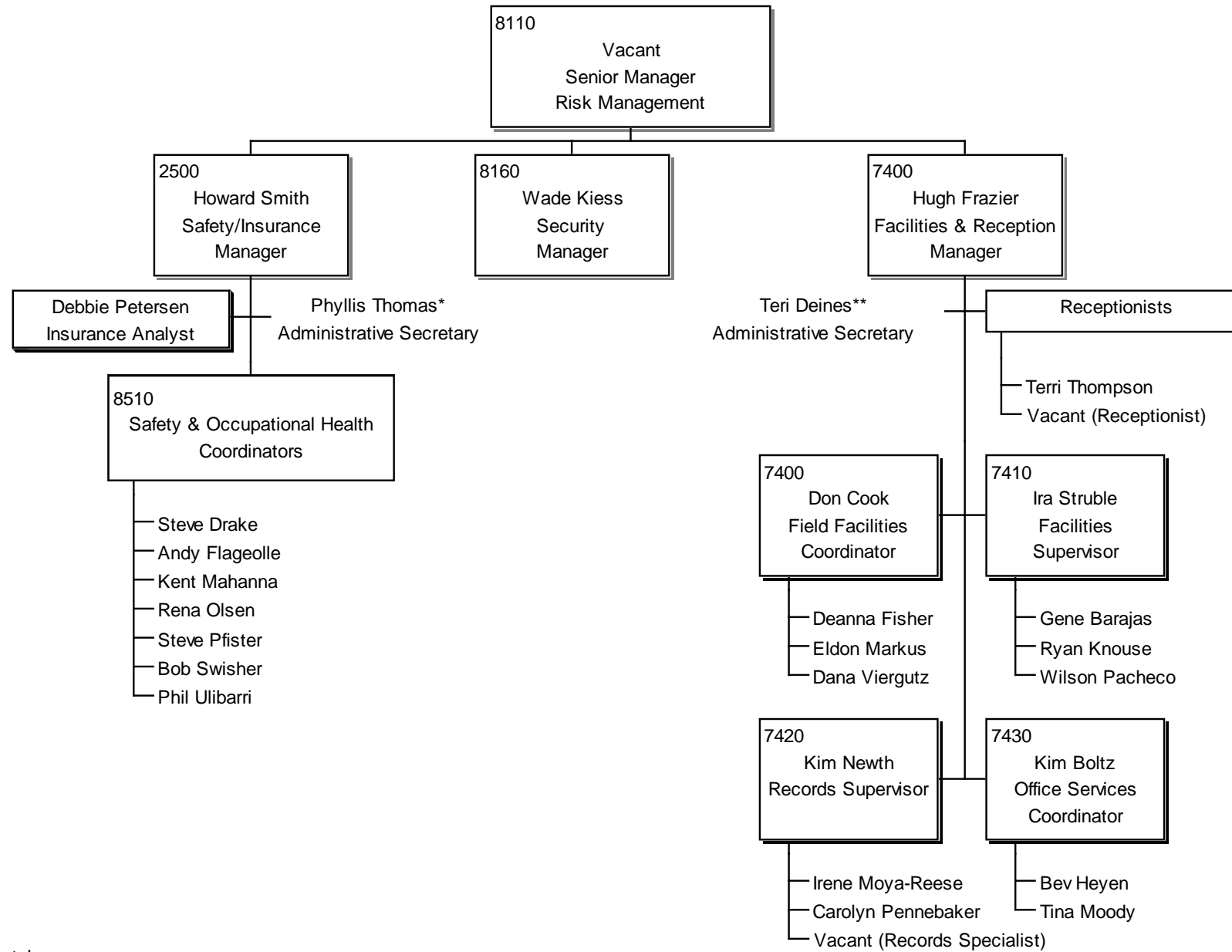
* Also supports Senior Vice President, CFO, and Vice President, Environmental Services, Sr. Manager, Corporate Finance

CORPORATE SERVICES
ORGANIZATION STRUCTURE



*Also supports Executive Vice President/General Manager

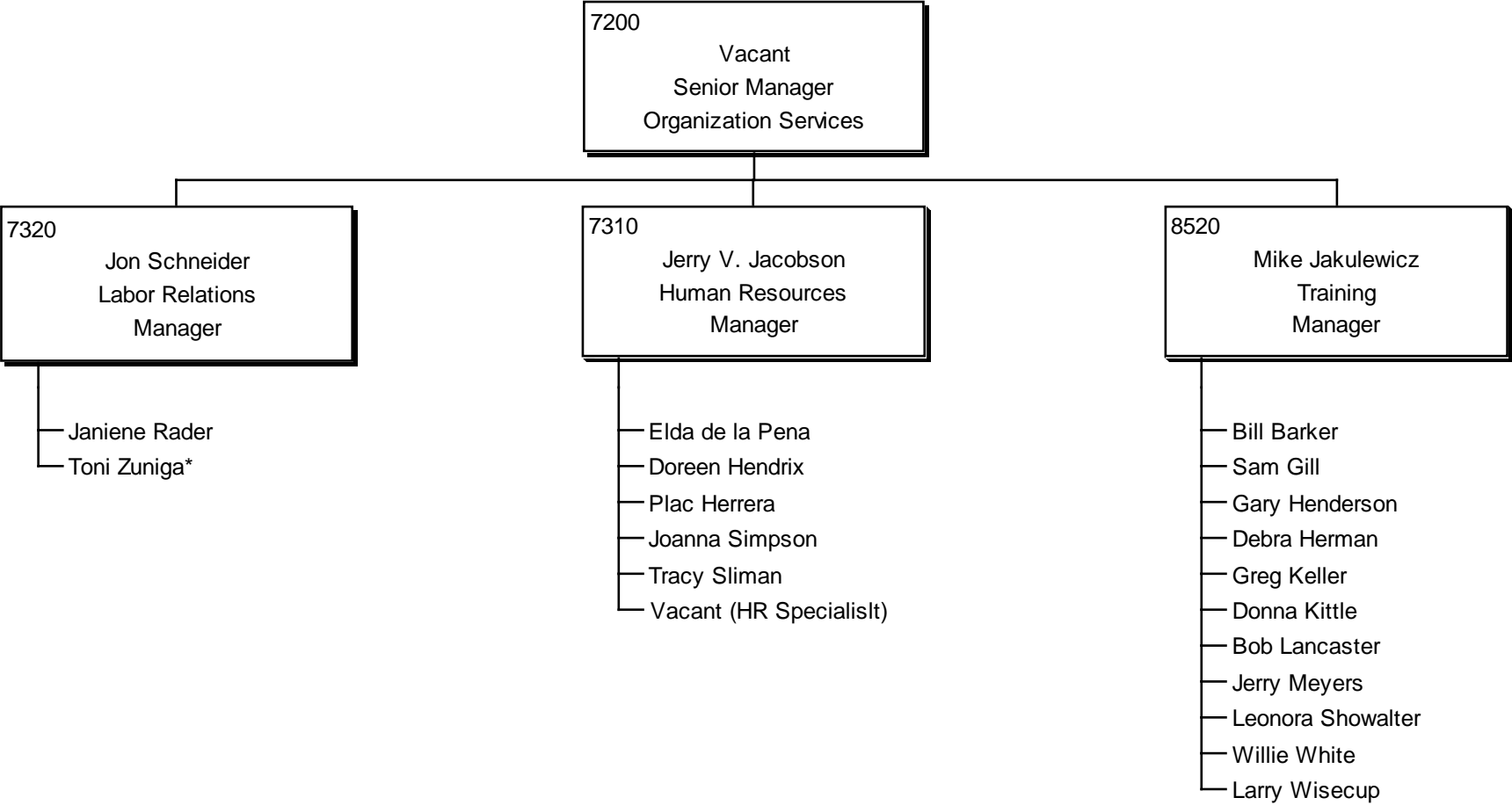
RISK MANAGEMENT
ORGANIZATION STRUCTURE



* Also supports Vice President, Environmental

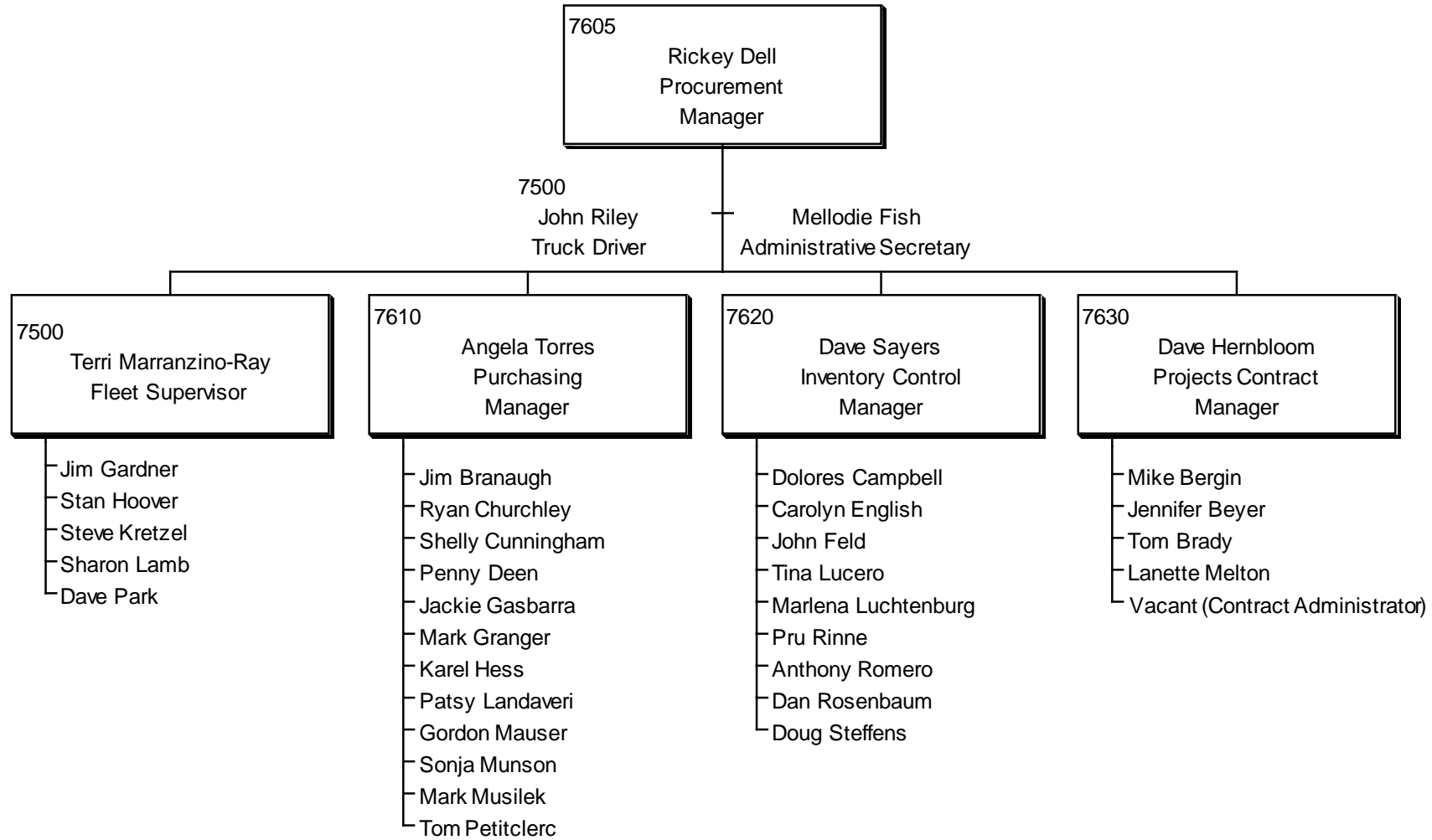
** Also supports Budget/Financial Planning Manager

ORGANIZATION SERVICES
ORGANIZATION STRUCTURE

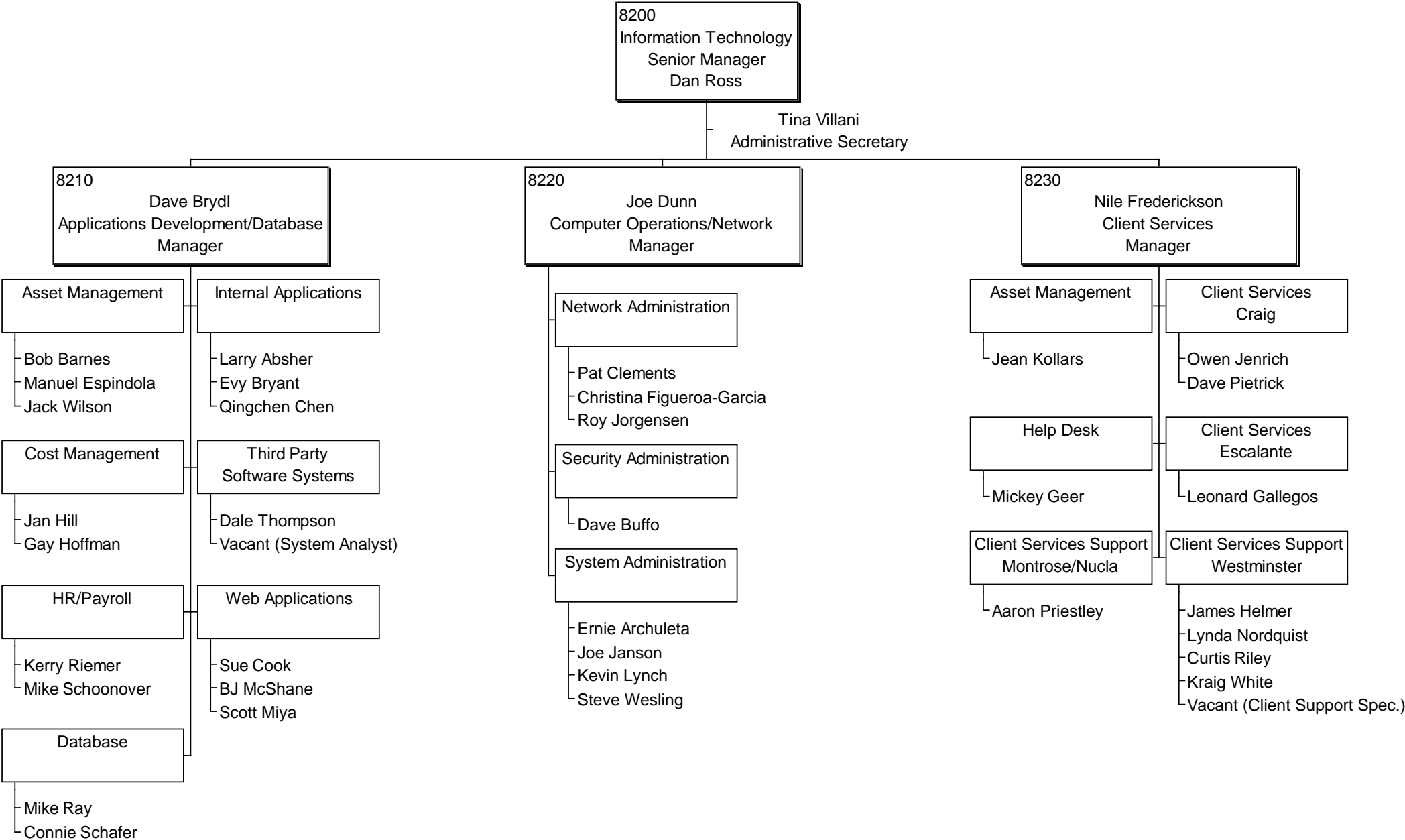


* Also supports Human Resources Manager

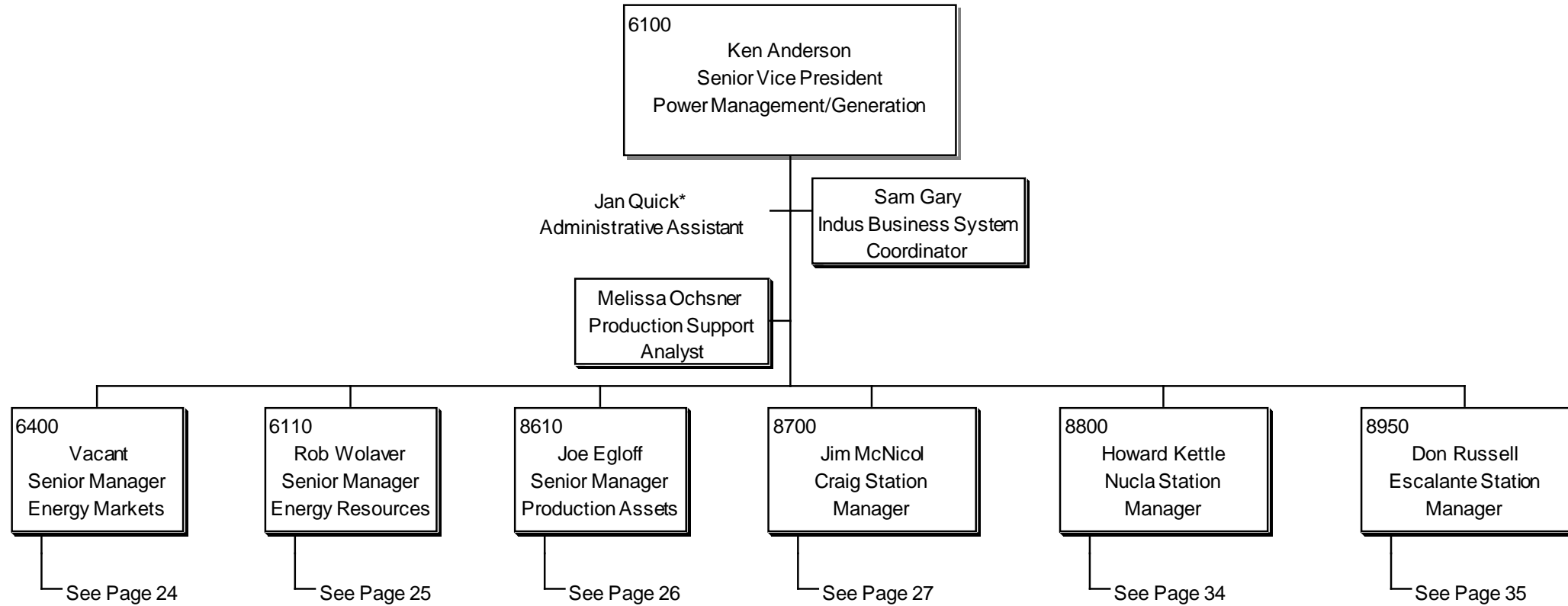
SUPPLY CHAIN
ORGANIZATION STRUCTURE



INFORMATION TECHNOLOGY ORGANIZATION STRUCTURE

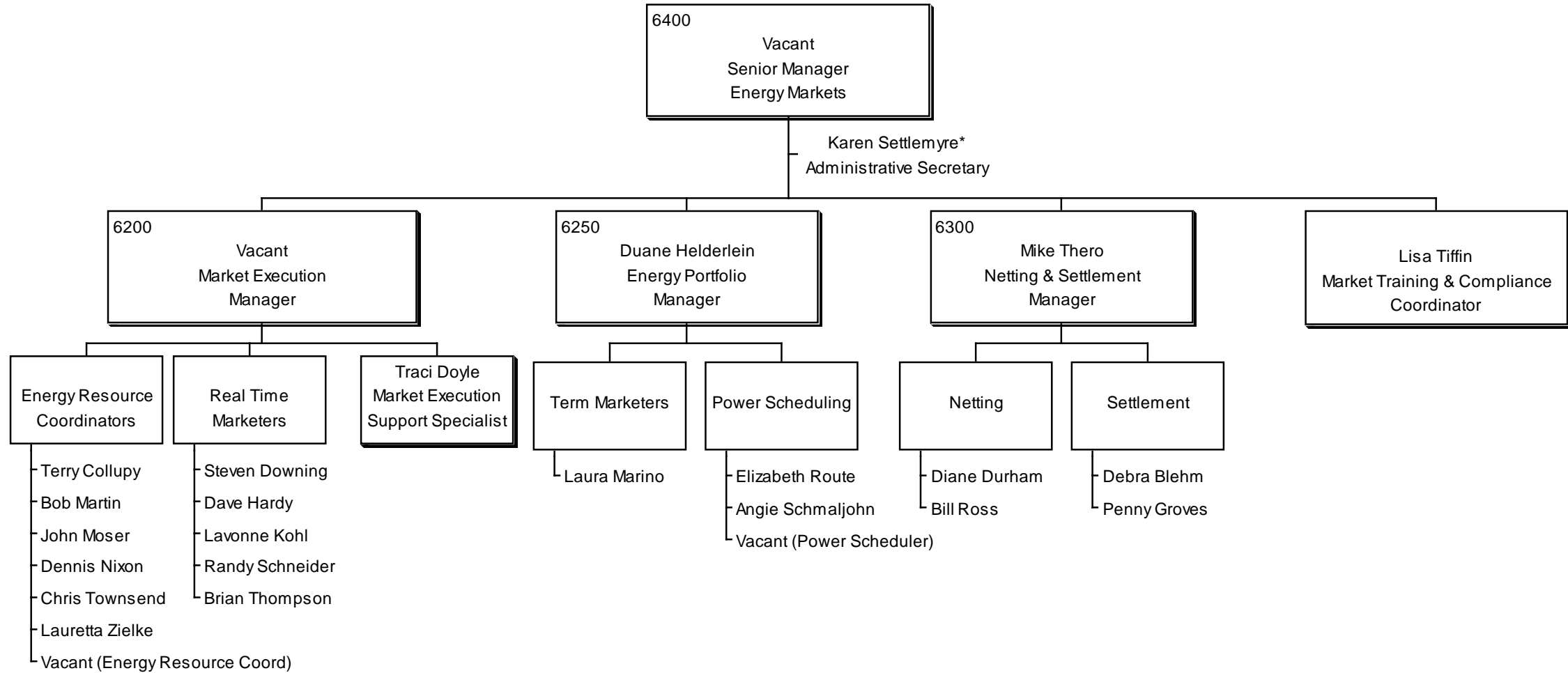


POWER MANAGEMENT & GENERATION
ORGANIZATION STRUCTURE



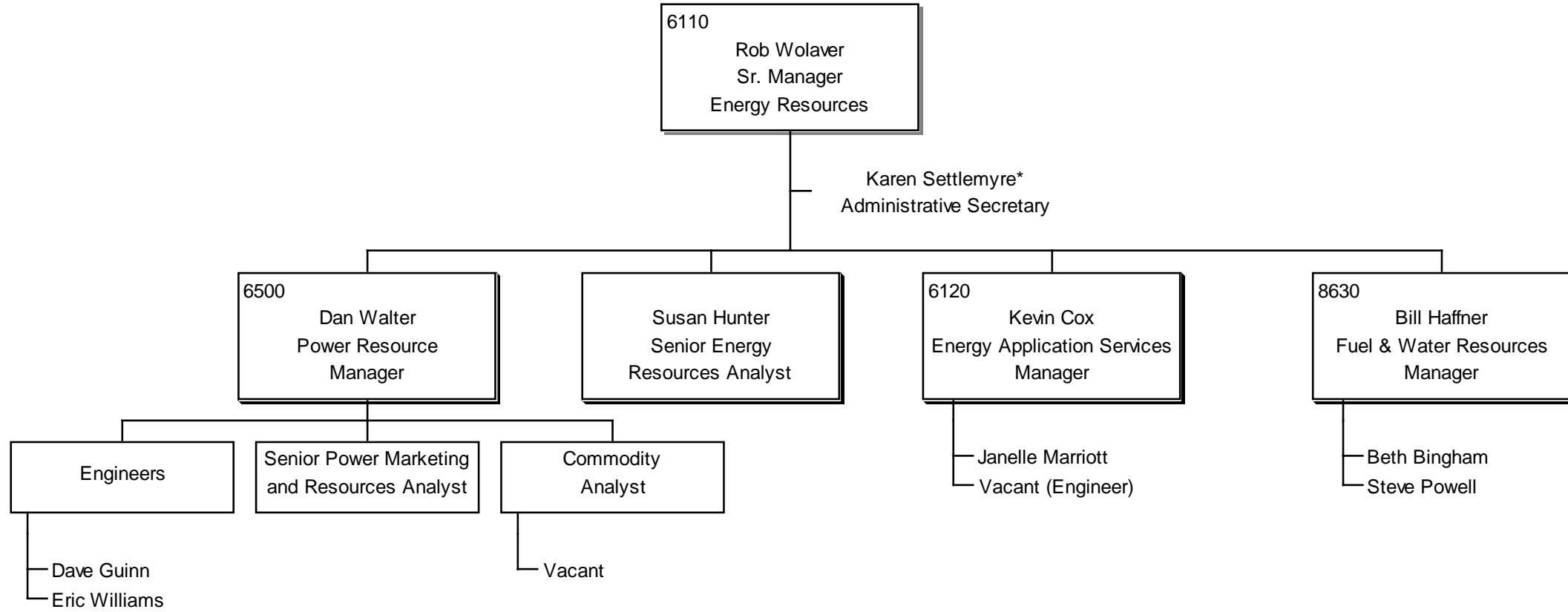
* Also supports Senior Vice President, Transmission and Vice President, Project Development

ENERGY MARKETS
ORGANIZATION STRUCTURE



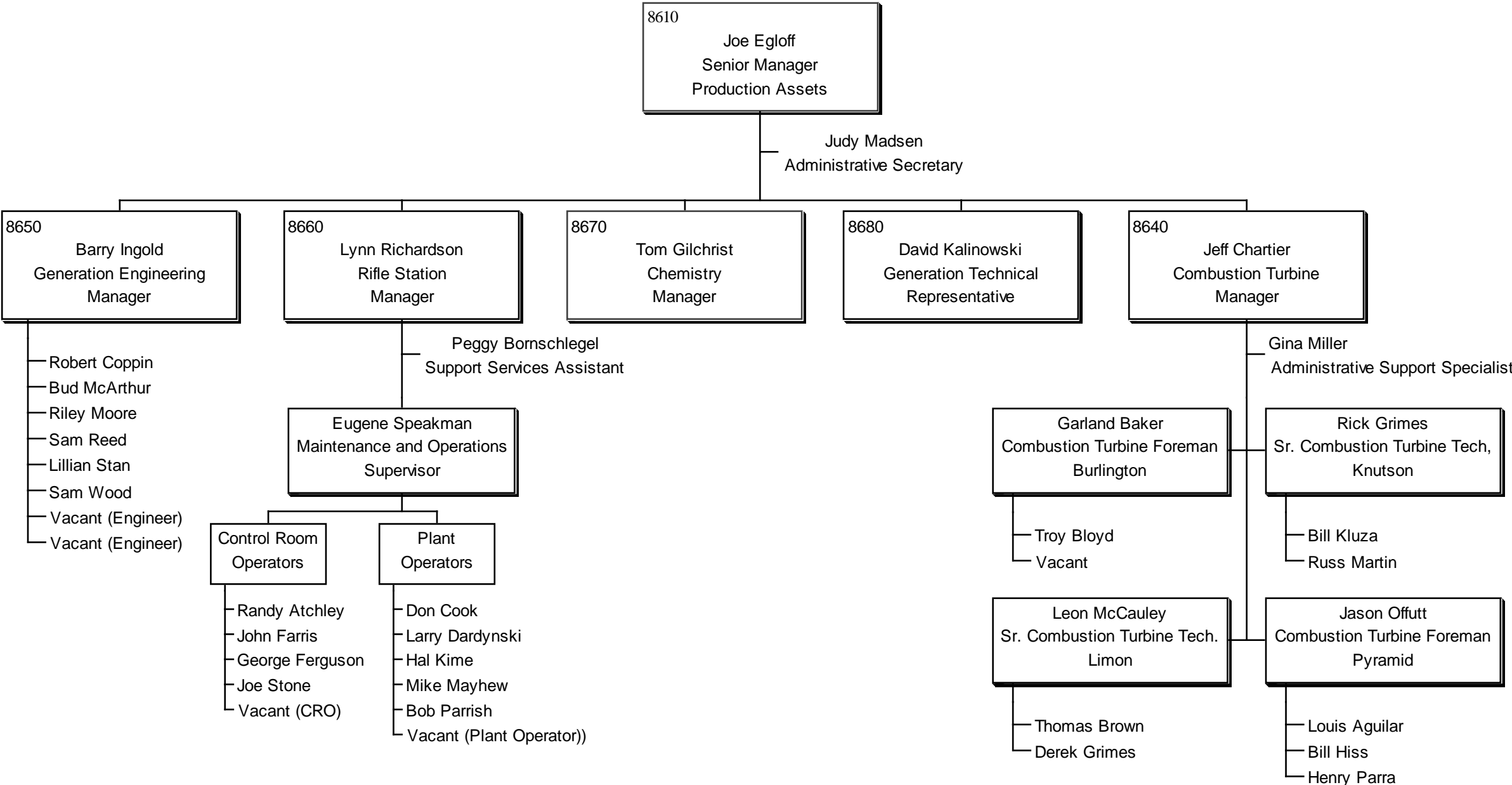
* Also supports Sr. Manager, Energy Resources

ENERGY RESOURCES
ORGANNIZATION STRUCTURE

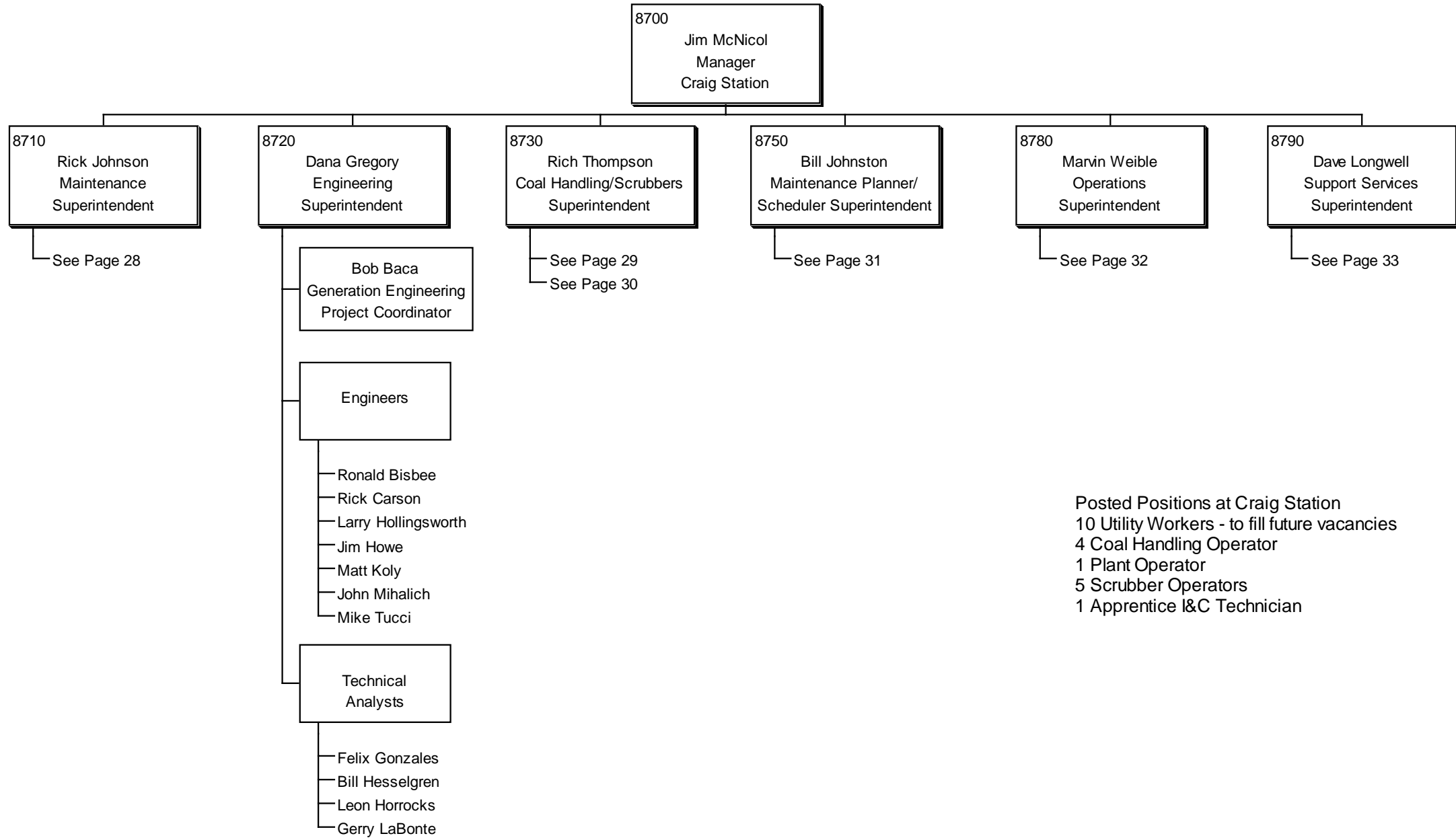


*Also supports Energy Markets

PRODUCTION ASSETS
ORGANIZATION STRUCTURE

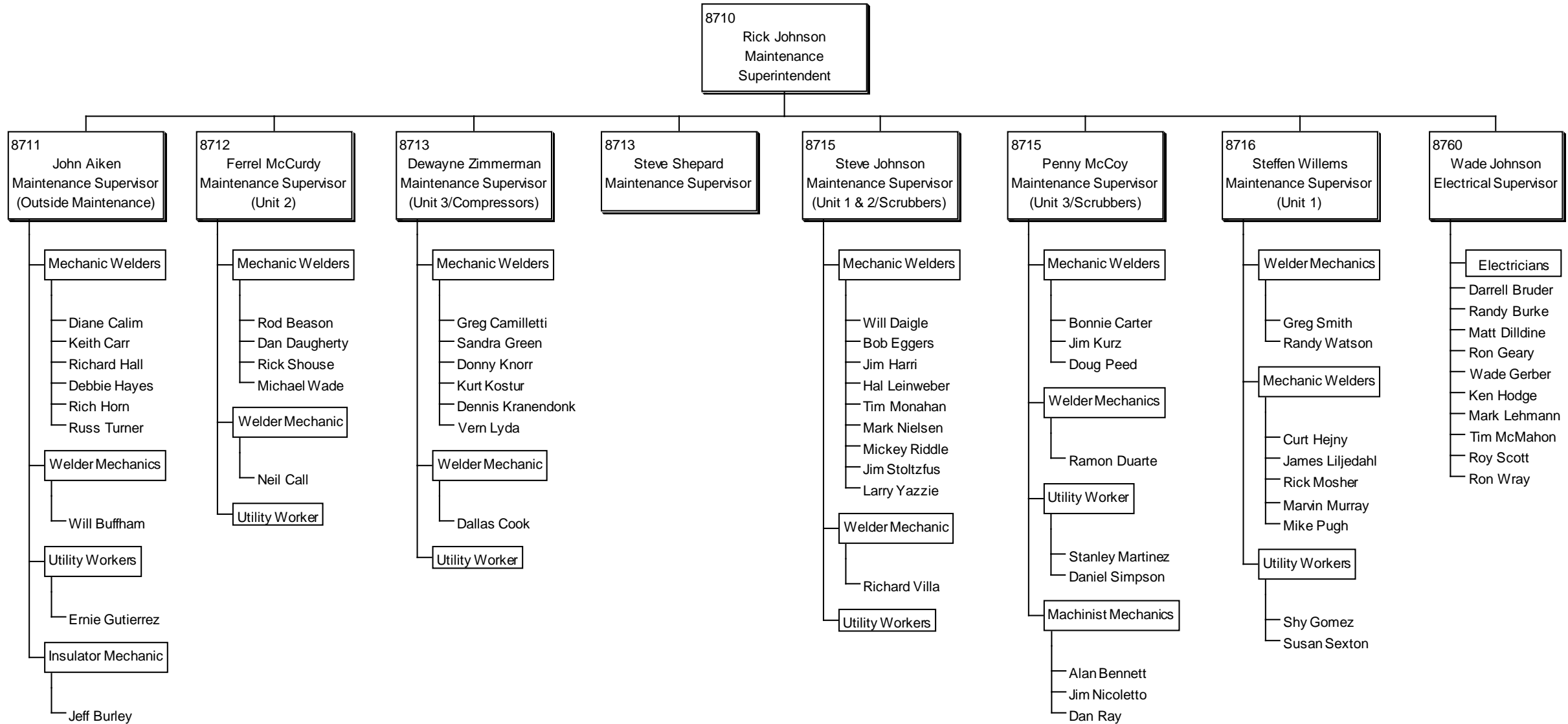


CRAIG STATION ORGANIZATION STRUCTURE

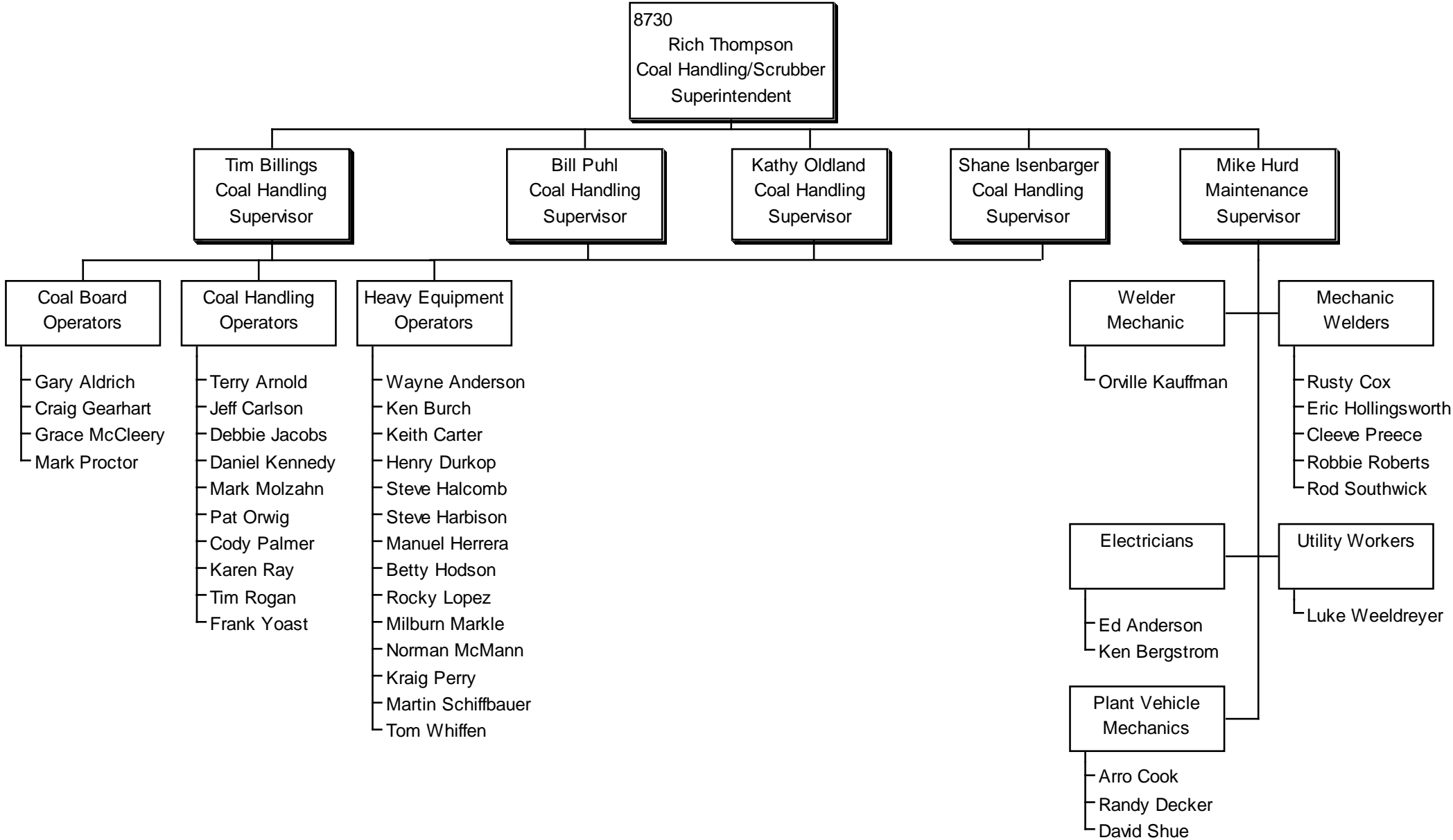


Posted Positions at Craig Station
 10 Utility Workers - to fill future vacancies
 4 Coal Handling Operator
 1 Plant Operator
 5 Scrubber Operators
 1 Apprentice I&C Technician

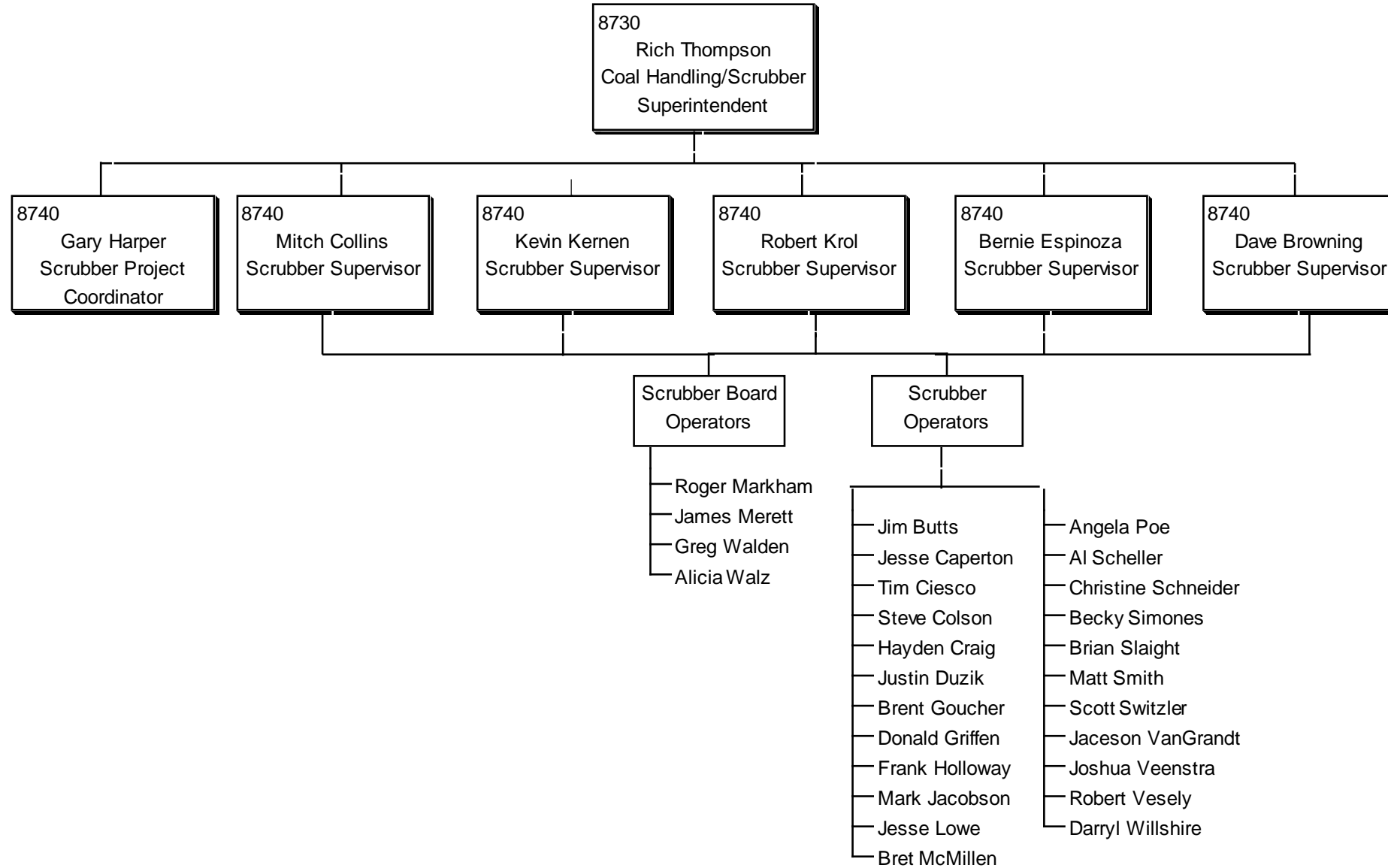
CRAIG STATION ORGANIZATION STRUCTURE



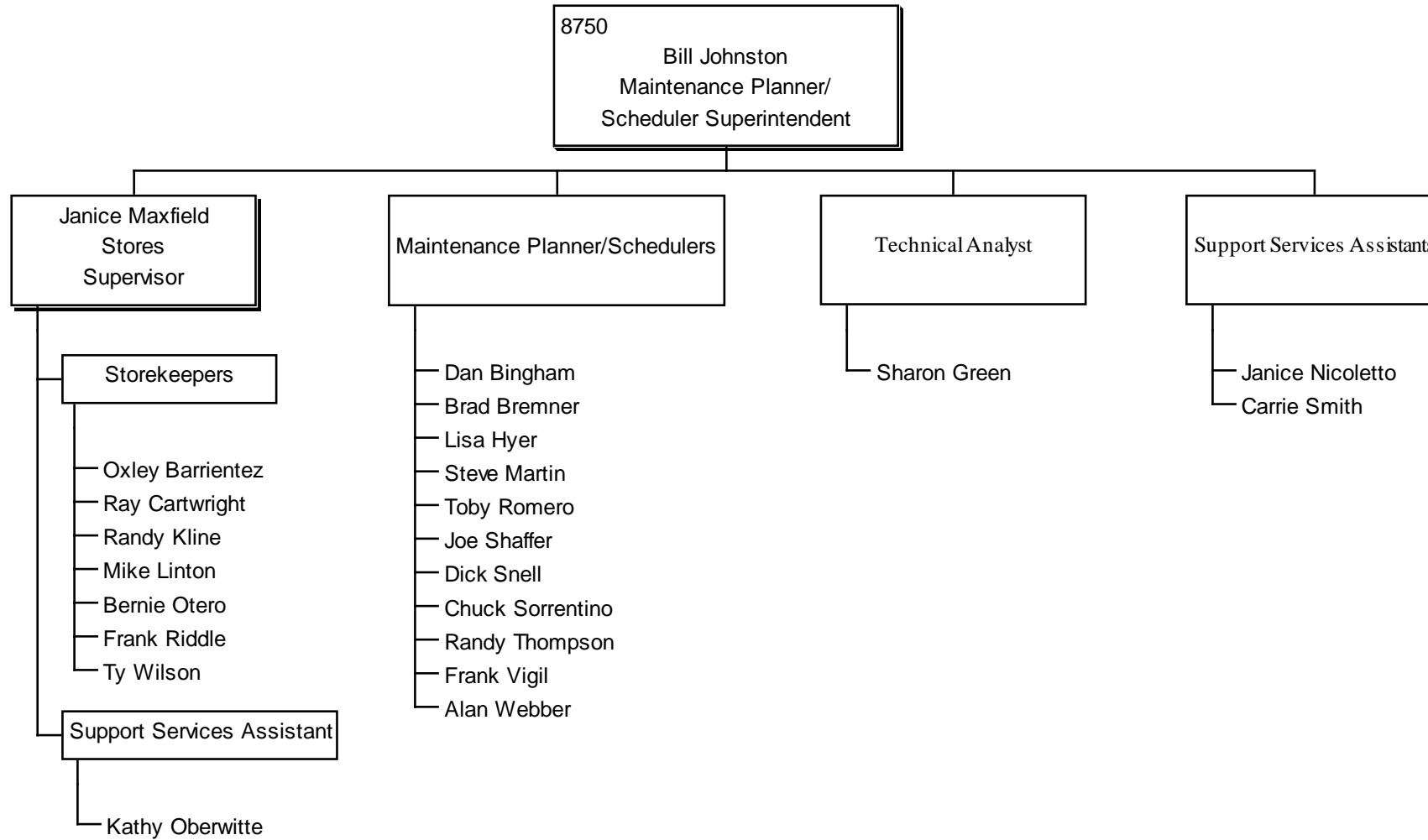
CRAIG STATION
ORGANIZATION STRUCTURE



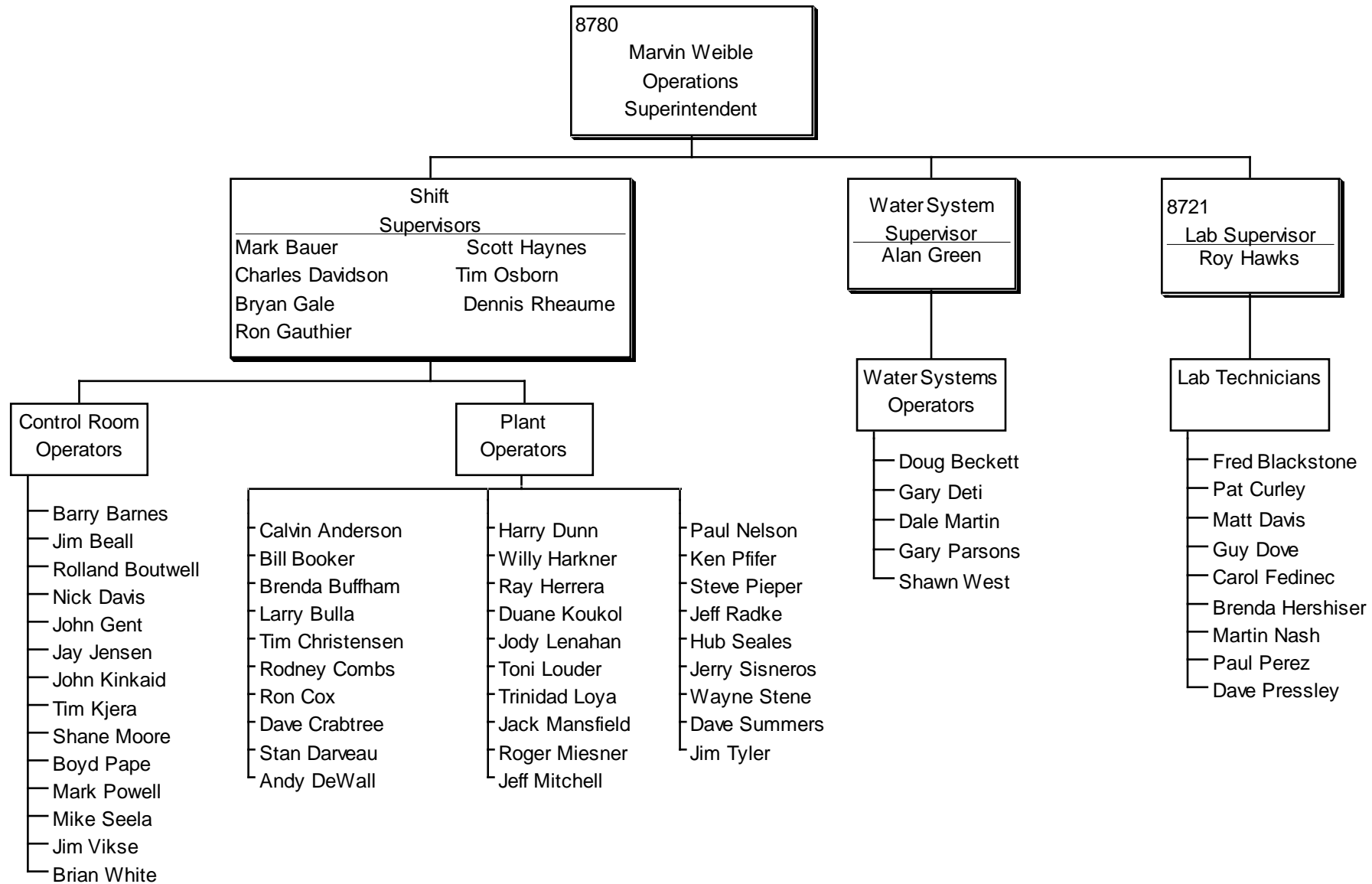
CRAIG STATION
ORGANIZATION STRUCTURE



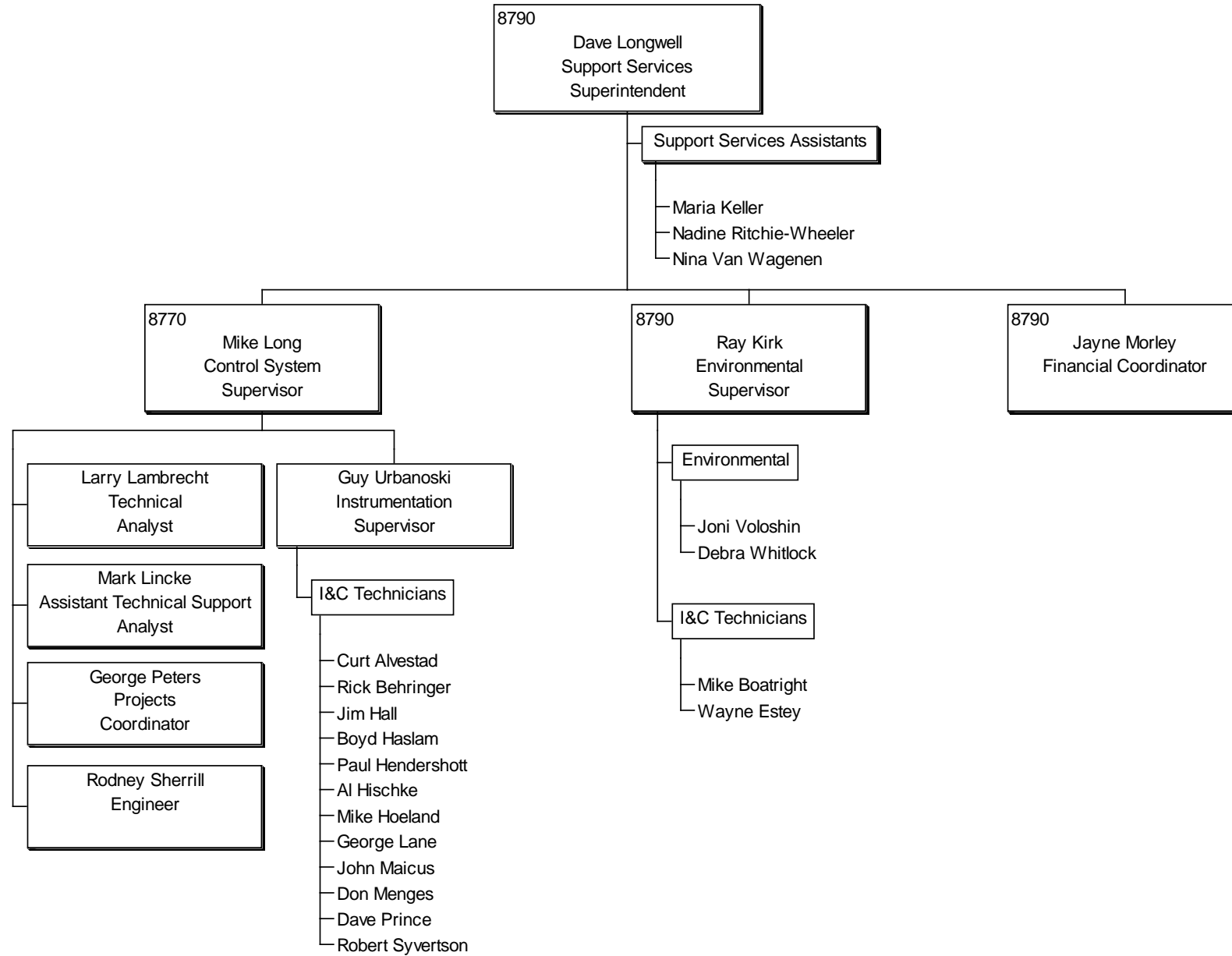
CRAIG STATION
ORGANIZATION STRUCTURE



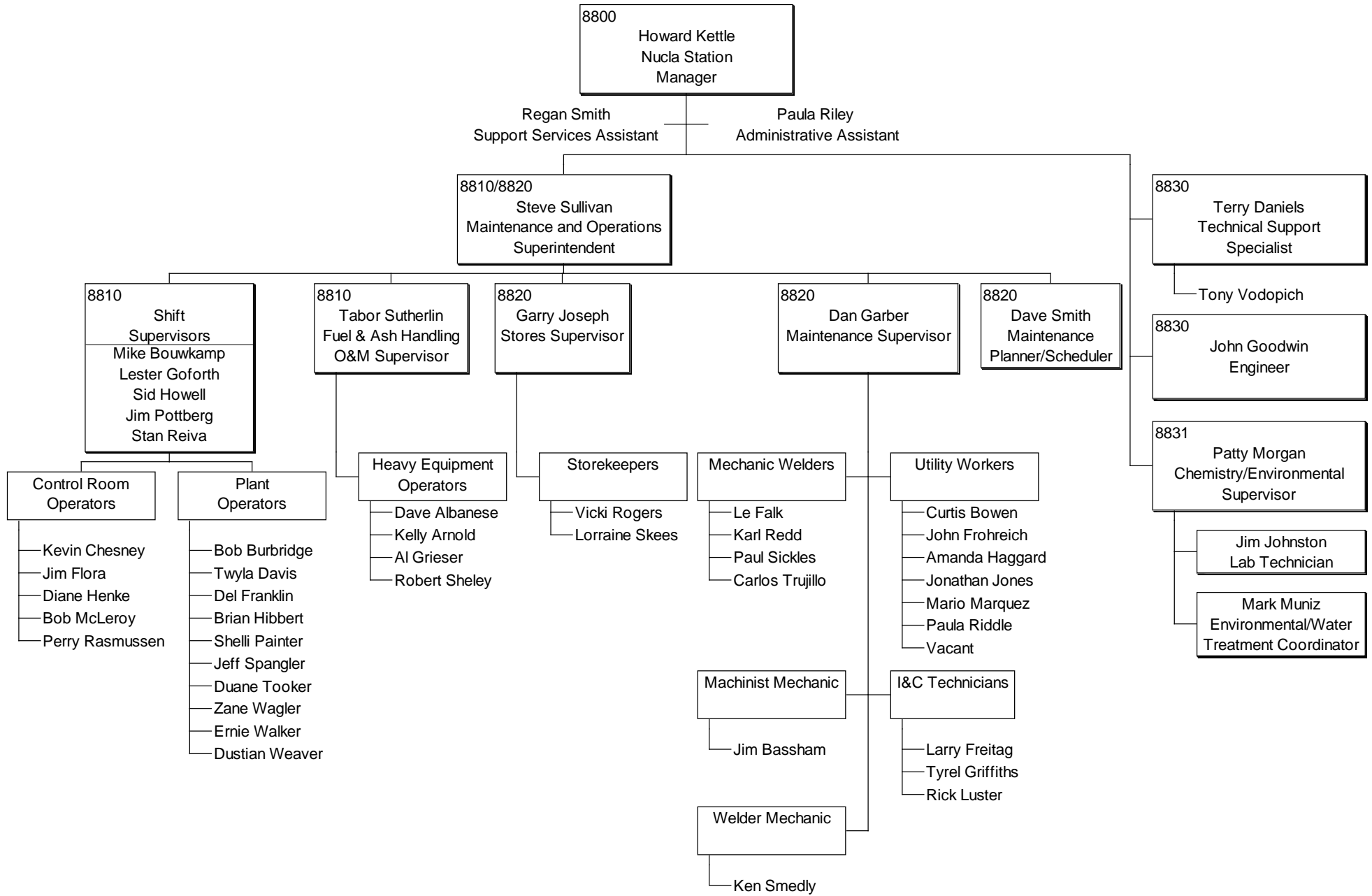
CRAIG STATION
ORGANIZATION STRUCTURE



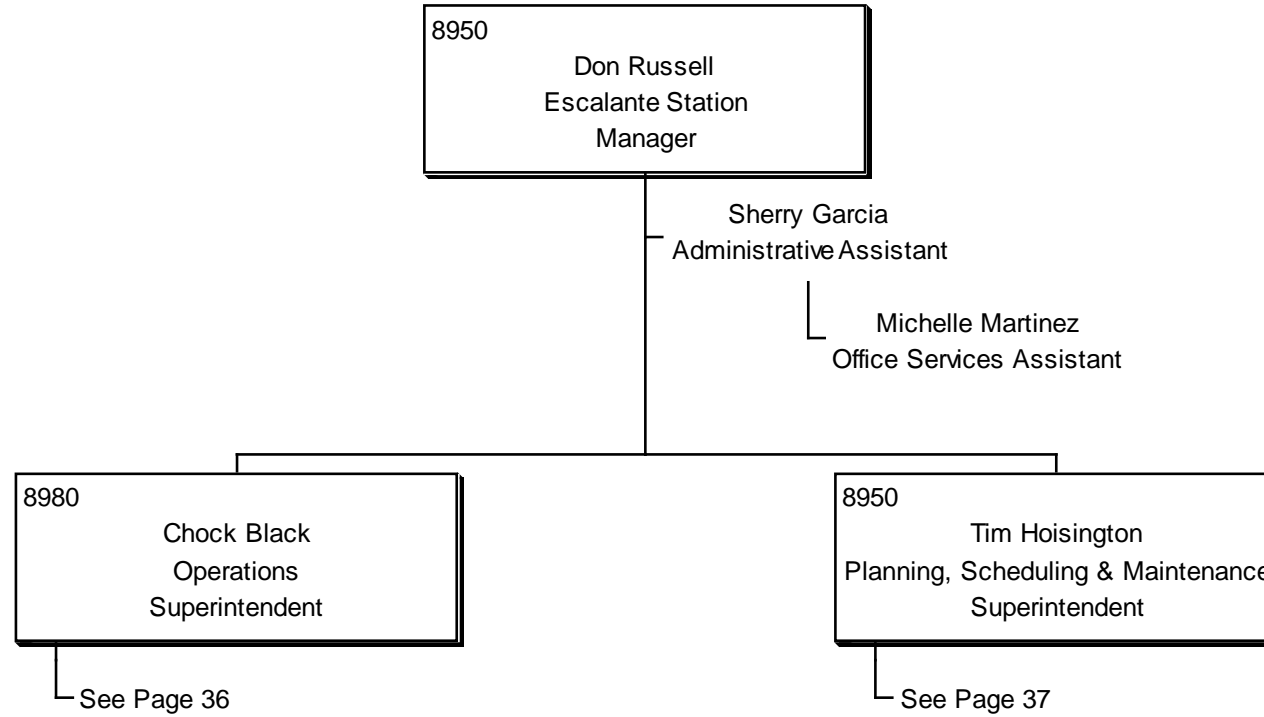
CRAIG STATION ORGANIZATION STRUCTURE



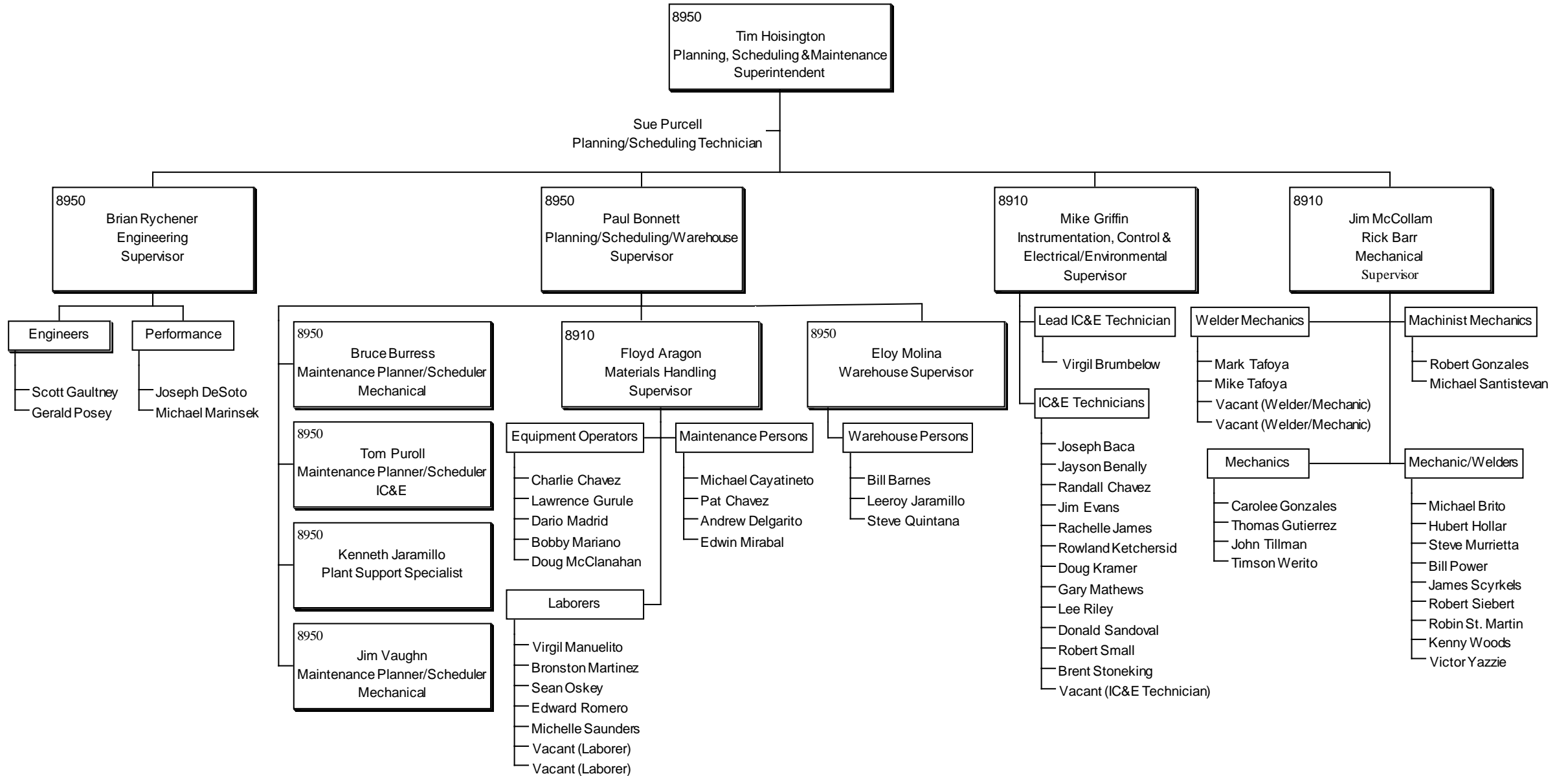
NUCLA STATION ORGANIZATION STRUCTURE



ESCALANTE STATION
ORGANIZATION STRUCTURE



ESCALANTE STATION ORGANIZATION STRUCTURE



ESCALANTE STATION
ORGANIZATION STRUCTURE

