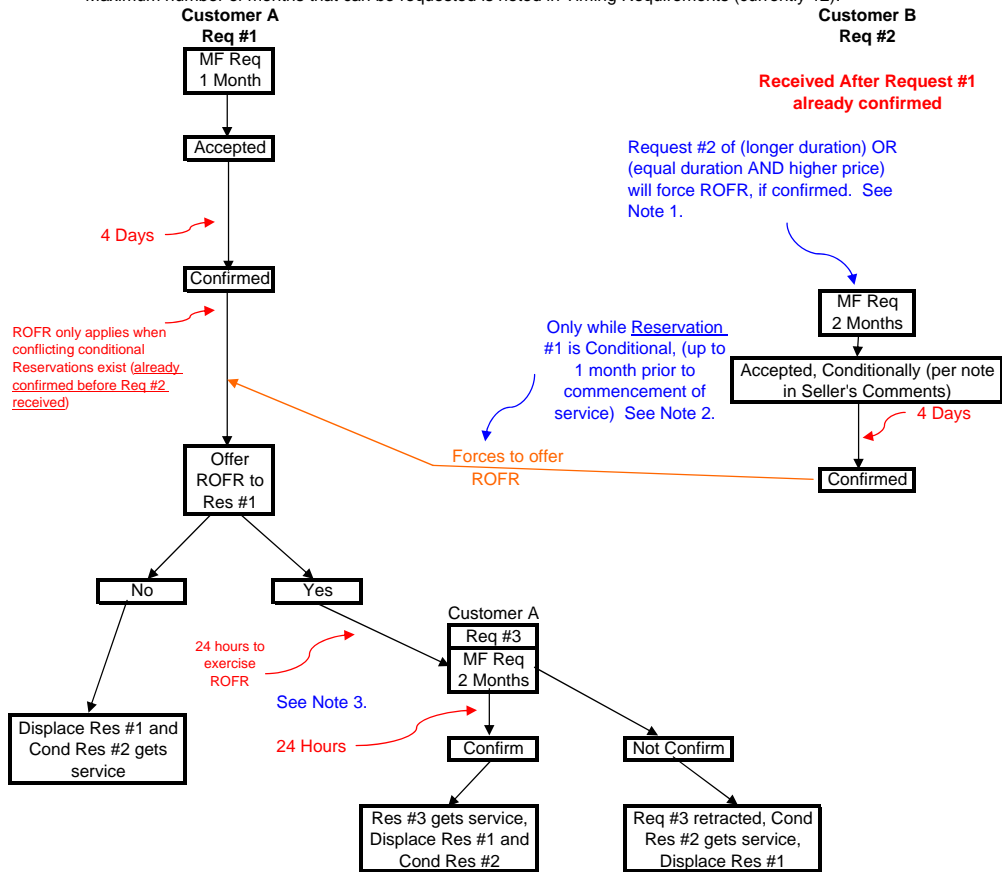


Flow Diagram for Offering Right of First Refusal (ROFR) Monthly Firm (MF) Transmission

Maximum number of months that can be requested is noted in Timing Requirements (currently 12).

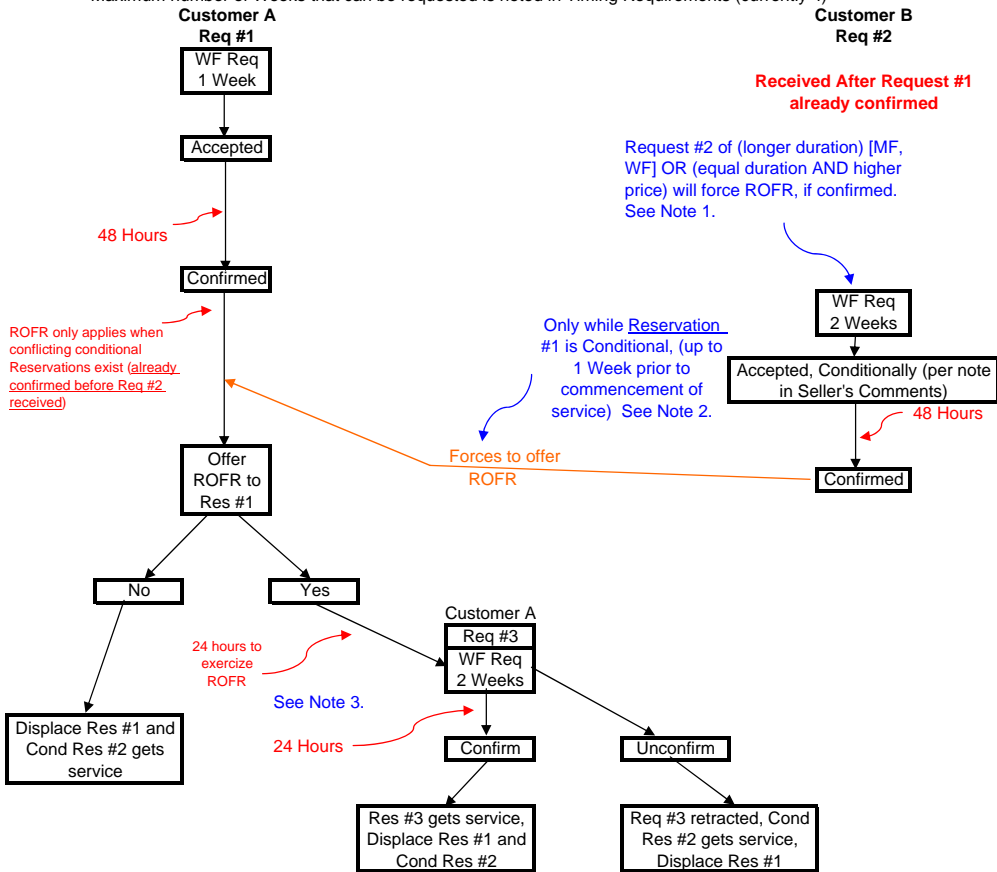


Notes:

1. Requests of (longer duration) OR (equal duration and higher price) will force ROFR. To force a ROFR the request of longer duration must be a higher service increment or same service increment but for longer duration; and must be at least the same level of capacity fixed over term of request (e.g. same MW for more months). If NO discounting, price doesn't apply.
2. A Monthly Firm reservation becomes unconditional within 1 month of the start time, unless a subsequent longer duration request forces a ROFR prior to the conditional deadline. In that case, the 1st reservation must exercise their ROFR to retain the transmission service.
3. The time limits to exercise ROFR by submitting a matching request and to confirm a ROFR request may be less than 24 hours to meet the scheduling deadline of 1000 day prior (or local scheduling deadline).
4. When a longer duration request preempts multiple shorter duration reservations, the shorter duration reservations shall have simultaneous opportunities to exercise the ROFR. Duration, pre-confirmation status, price, and time of response will be used to determine the order by which the multiple shorter duration reservations will be able to exercise the ROFR (Order 890, P1430). If NO discounting, price doesn't apply. Time of response is the queue time; first queued has higher priority.
5. A "competing request" under OATT Section 13.2 may include a request that overlaps with only part of another existing transmission reservation since both requests cannot be granted simultaneously, and may preempt one or more existing transmission reservations or parts thereof.
6. A customer can retain its original reservation by matching the competing service request's cost or duration terms exactly or by exceeding one or more of the terms of a competing transmission service
7. A Customer's ROFR to match a competing transmission service request applies to the primary transmission service, not the reassignment of scheduling rights.
8. There is no ROFR for a competing Long-Term Yearly Firm or Network Firm request.

Flow Diagram for Offering Right of First Refusal (ROFR) Weekly Firm (WF) Transmission

Maximum number of Weeks that can be requested is noted in Timing Requirements (currently 4)



Notes:

1. Requests of (longer duration) OR (equal duration and higher price) will force ROFR. To force a ROFR the request of longer duration must be a higher service increment or same service increment but for longer duration; and must be at least the same level of capacity fixed over term of request (e.g. same MW for more months/weeks). If NO discounting, price doesn't apply.
2. A Weekly Firm reservation becomes unconditional within 1 week of the start time, unless a subsequent longer duration request forces a ROFR prior to the conditional deadline. In that case, the 1st reservation must exercise their ROFR to retain the transmission service.
3. The time limits to exercise ROFR by submitting a matching request and to confirm a ROFR request may be less than 24 hours to meet the scheduling deadline of 1000 day prior (or local scheduling deadline).
4. When a longer duration request preempts multiple shorter duration reservations, the shorter duration reservations shall have simultaneous opportunities to exercise the ROFR. Duration, pre-confirmation status, price, and time of response will be used to determine the order by which the multiple shorter duration reservations will be able to exercise the ROFR (Order 890, P1430). If NO discounting, price doesn't apply. Time of response is the queue time; first queued has higher priority.
5. A "competing request" under OATT Section 13.2 may include a request that overlaps with only part of another existing transmission reservation since both requests cannot be granted simultaneously, and may preempt one or more existing transmission reservations or parts thereof.
6. A customer can retain its original reservation by matching the competing service request's cost or duration terms exactly or by exceeding one or more of the terms of a competing transmission service
7. A Customer's ROFR to match a competing transmission service request applies to the primary transmission service, not the reassignment of scheduling rights.
8. There is no ROFR for a competing Long-Term Yearly Firm or Network Firm request.

Flow Diagram for Offering Right of First Refusal (ROFR) Daily Firm (DF) Transmission

Maximum number of Days that can be requested is noted in Timing Requirements (currently 7)

**Customer A
Req #1**

DF Req
1 Day

Accepted

Confirmed

Offer
ROFR to
Res #1

No

Yes

Displace Res #1 and
Cond Res #2 gets
service

24 hours to
exercise
ROFR

See Note 3.

24 Hours

**Customer A
Req #3**

DF Req
2 Days

Confirm

Res #3 gets service,
Displace Res #1 and
Cond Res #2

Unconfirm

Req #3 retracted, Cond
Res #2 gets service,
Displace Res #1

**Customer B
Req #2**

Received After Request #1
already confirmed

Request #2 of (longer duration) [MF,
WF, DF] OR (equal duration AND
higher price) will force ROFR, if
confirmed. See Note 1.

DF Req
2 Days

Accepted, Conditionally (per note
in Seller's Comments)

Confirmed

Only while Reservation
#1 is Conditional, (up to
1 Day prior to
commencement of
service) See Note 2.

Forces to offer
ROFR

24 Hours

ROFR only applies when
conflicting conditional
Reservations exist (already
confirmed before Req #2
received)

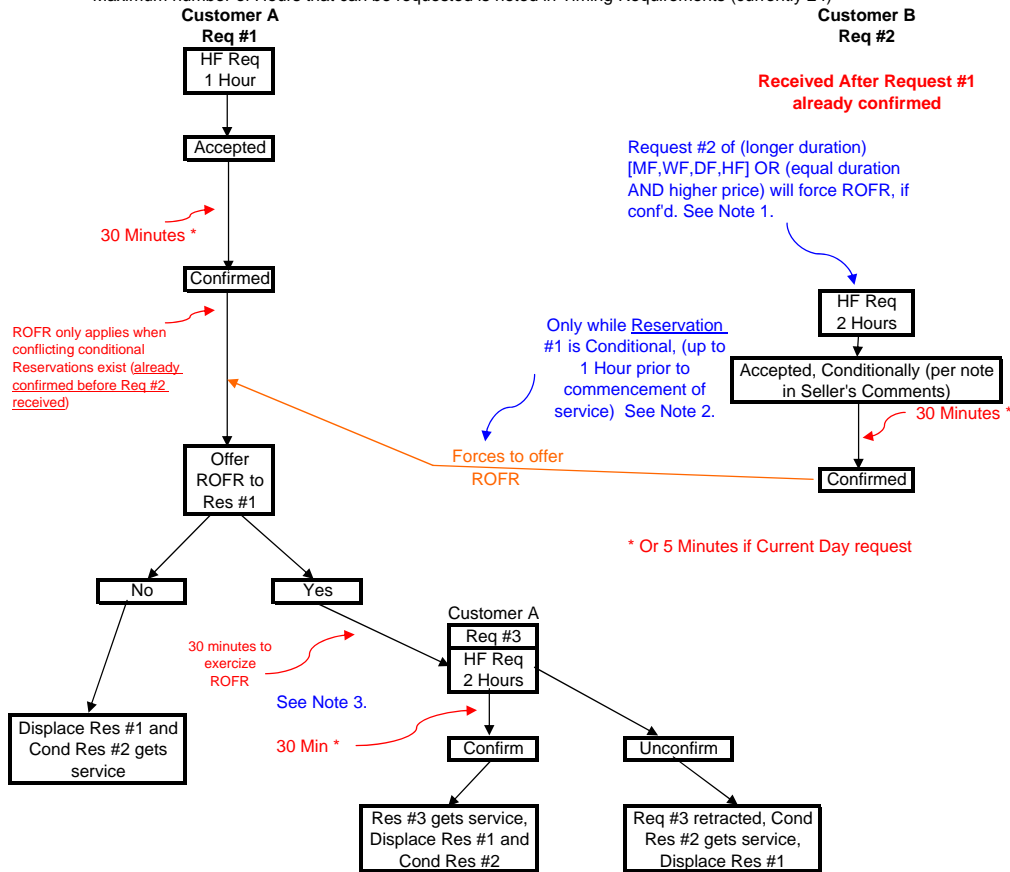
24 Hours

Notes:

1. Requests of (longer duration) OR (equal duration and higher price) will force ROFR. To force a ROFR the request of longer duration must be a higher service increment or same service increment but for longer duration; and must be at least the same level of capacity fixed over term of request (e.g. same MW for more months/weeks/days). If NO discounting, price doesn't apply.
2. A Daily Firm reservation becomes unconditional within 1 day of the start time, unless a subsequent longer duration request forces a ROFR prior to the conditional deadline. In that case, the 1st reservation must exercise their ROFR to retain the transmission service.
3. The time limits to exercise ROFR by submitting a matching request and to confirm a ROFR request may be less than 24 hours to meet the scheduling deadline of 1000 day prior (or local scheduling deadline).
4. When a longer duration request preempts multiple shorter duration reservations, the shorter duration reservations shall have simultaneous opportunities to exercise the ROFR. Duration, pre-confirmation status, price, and time of response will be used to determine the order by which the multiple shorter duration reservations will be able to exercise the ROFR (Order 890, P1430). If NO discounting, price doesn't apply. Time of response is the queue time; first queued has higher priority.
5. A "competing request" under OATT Section 13.2 may include a request that overlaps with only part of another existing transmission reservation since both requests cannot be granted simultaneously, and may preempt one or more existing transmission reservations or parts thereof.
6. A customer can retain its original reservation by matching the competing service request's cost or duration terms exactly or by exceeding one or more of the terms of a competing transmission service
7. A Customer's ROFR to match a competing transmission service request applies to the primary transmission service, not the reassignment of scheduling rights.
8. There is no ROFR for a competing Long-Term Yearly Firm or Network Firm request.

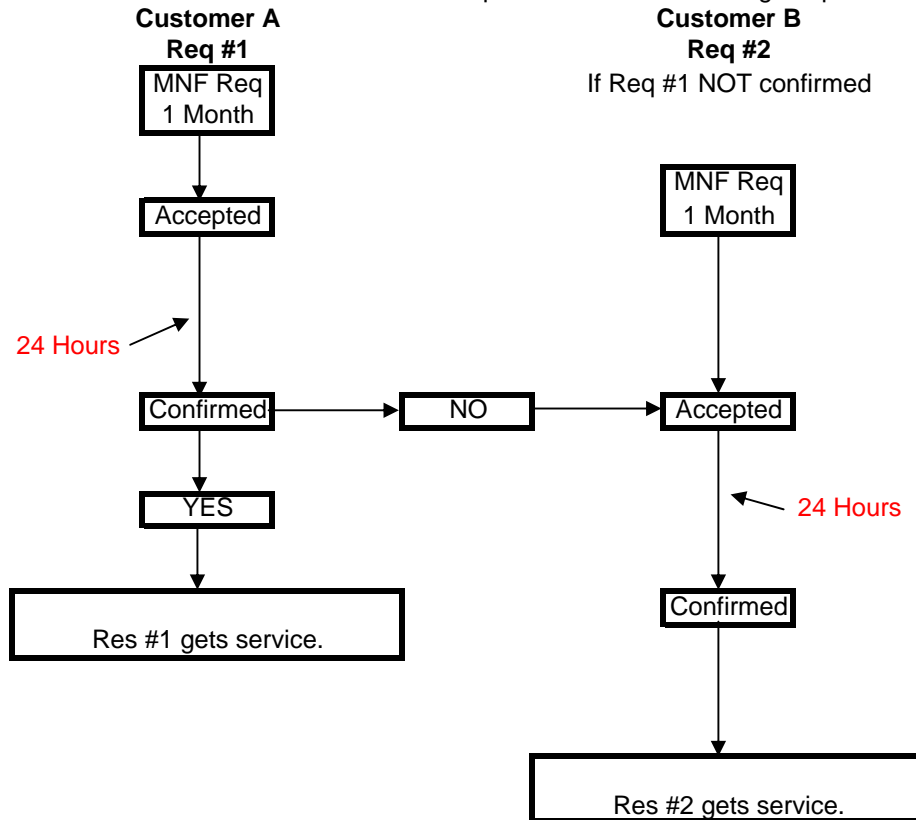
Flow Diagram for Offering Right of First Refusal (ROFR) Hourly Firm (HF) Transmission

Maximum number of Hours that can be requested is noted in Timing Requirements (currently 24)



Flow Diagram for Offering Right of First Refusal Monthly Non-Firm (MNF) Transmission

Maximum number of Months that can be requested is noted in Timing Requirements (currently 1)



Notes:

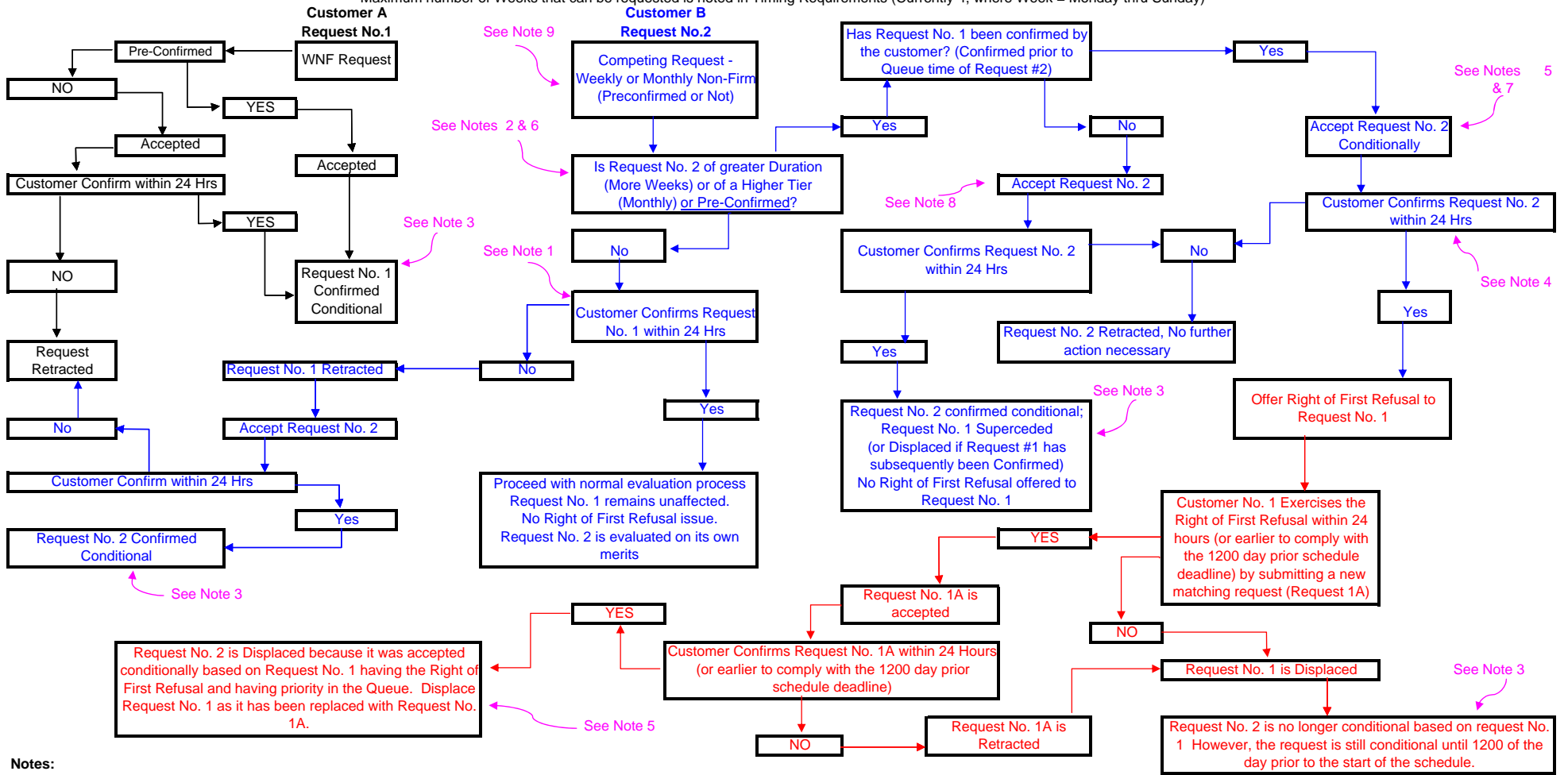
1. After Request #1 is confirmed a request of equal duration and higher price or higher revenue (same month) will not force ROFR.
2. Any Firm request (even for 1 day/ 1 hr) within the time of the monthly Non-Firm request will have priority and the non-Firm request will not have ROFR

(For Western OATT Effective 12/1/2009)

Notes:

Flow Diagram for Offering Right of First Refusal Weekly Non-Firm (WNF) Transmission

Maximum number of Weeks that can be requested is noted in Timing Requirements (Currently 4, where Week = Monday thru Sunday)



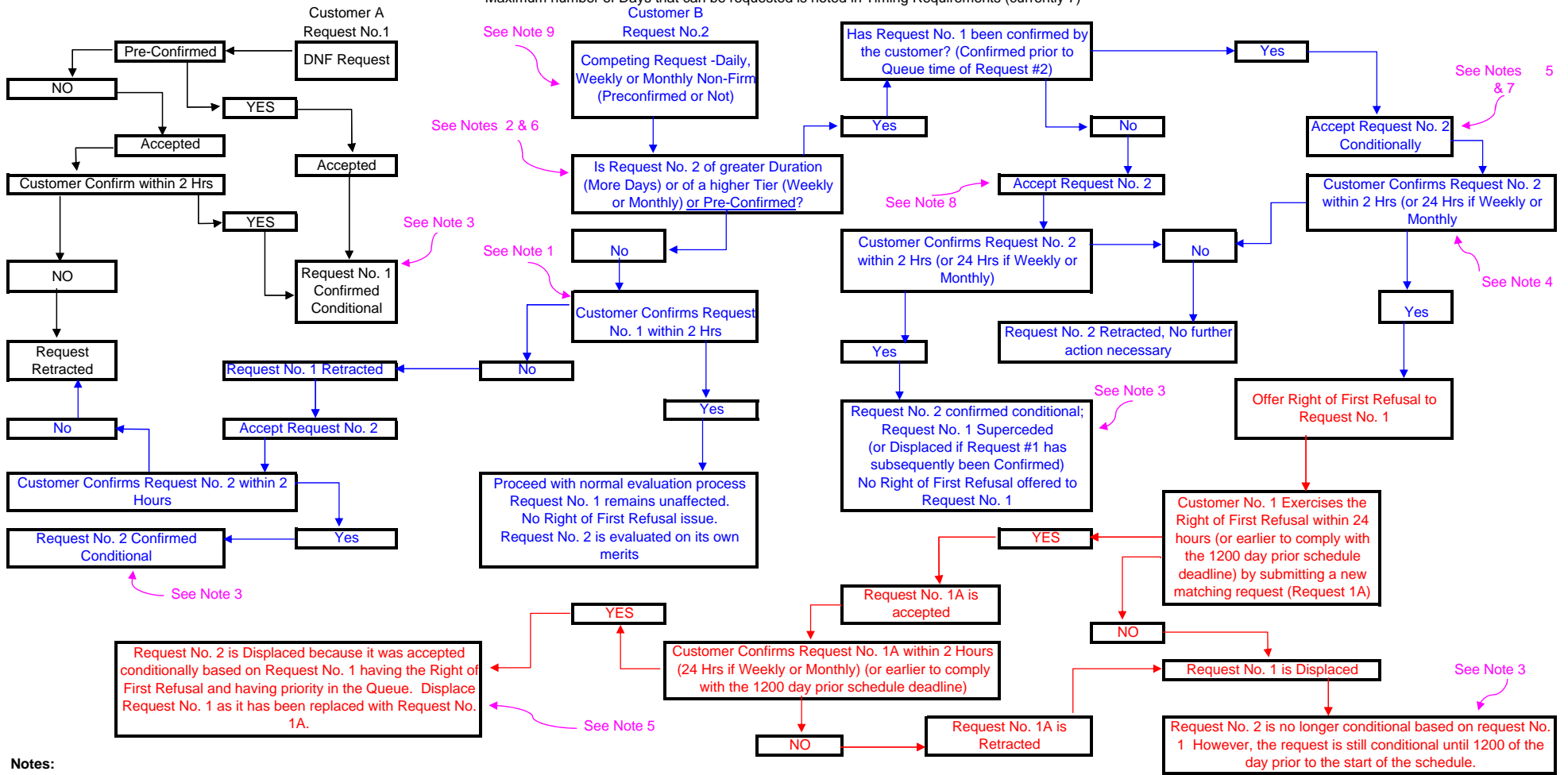
Notes:

1. Once a request has been confirmed, it shall not be preempted by a subsequent request of equal duration (even if for a higher price)
2. A request is not considered to be of longer duration unless the Multiple Service Increments (in this case the individual weeks of the request) are at (or greater than) the same level of capacity (same or more MW per week). I.e.: A request is not considered Longer Term if the request is for 3 weeks at 50 MW and 1 week at 1 MW.
3. The Right of First Refusal only applies as long as the request is conditional (In this case, up to 1 hour prior to schedule start). After this time, a request is no longer considered conditional, and cannot be displaced by a subsequent request of higher priority or longer duration.
4. A Non-firm request is not entitled to the Right of First Refusal until the request has been confirmed.
5. When Requests are accepted conditionally, displaced, or superseded, an entry shall be made in the providers comments, explaining the reason. If another request is involved in the conditional acceptance, displacement, or superseded action, the reservation number of that request shall also be included.
6. Western currently Charges their "Up To" price for all transmission, and thus a bid for higher price would not apply when considering requests of equal duration. Western does not consider a request of equal duration to be for higher revenue, when the integrated MW of a competing request exceeds the capacity of the initial request.
7. Conditional Acceptance of Request No 2 is based on the assumption Request No 1 will not exercise its "Right of First Refusal" and displacing it will provide the necessary ATC
8. If Request #1 has not yet been confirmed at the time of the acceptance of Request #2 (of longer duration), then Request #2 has priority with no Right of First Refusal offered to Request #1
9. When a subsequent request is for Firm service, once the Firm Request has been confirmed, all affected Non-Firm Requests will be displaced with no "Right of First Refusal" option offered

(For Western OATT Effective 12/1/2009)

Flow Diagram for Offering Right of First Refusal Daily Non-Firm (DNF) Transmission

Maximum number of Days that can be requested is noted in Timing Requirements (currently 7)



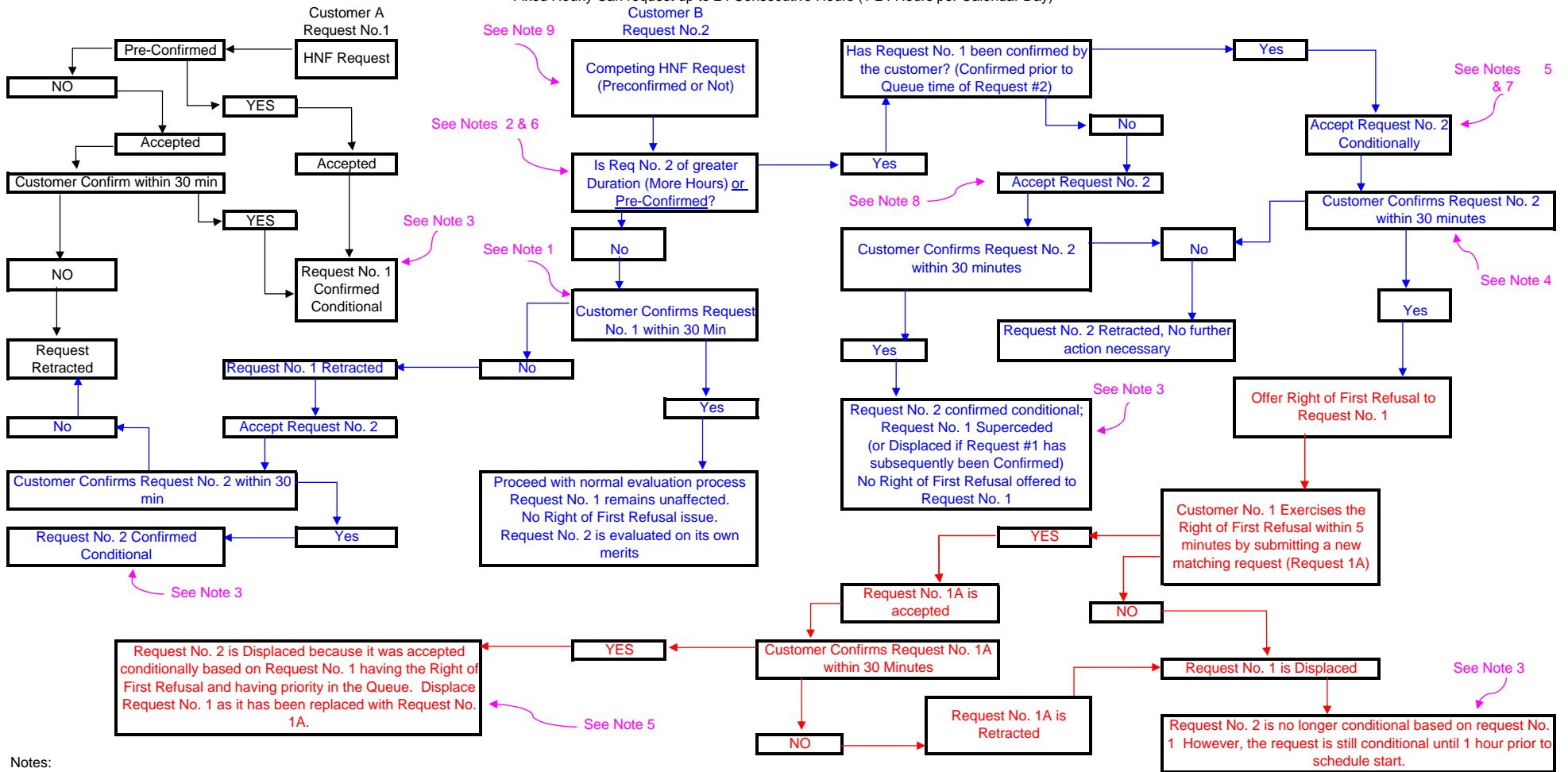
Notes:

1. Once a request has been confirmed, it shall not be preempted by a subsequent request of equal duration (even if for a higher price)
2. A request is not considered to be of longer duration unless the Multiple Service Increments (in this case the individual days of the request) are at (or greater than) the same level of capacity (same or more MW per day). I.e.: A request is not considered Longer Term if the request is for 5 days at 50 MW and 1 day at 1 MW.
3. The Right of First Refusal only applies as long as the request is conditional (In this case, up to 1 hour prior to schedule start). After this time, a request is no longer considered conditional, and cannot be displaced by a subsequent request of higher priority or longer duration.
4. A Non-firm request is not entitled to the Right of First Refusal until the request has been confirmed.
5. When Requests are accepted conditionally, displaced, or superseded, an entry shall be made in the providers comments, explaining the reason. If another request is involved in the conditional acceptance, displacement, or superseded action, the reservation number of that request shall also be included.
6. Western currently Charges their "Up To" price for all transmission, and thus a bid for higher price would not apply when considering requests of equal duration. Western does not consider a request of equal duration to be for higher revenue, when the integrated MW of a competing request exceeds the capacity of the initial request.
7. Conditional Acceptance of Request No 2 is based on the assumption Request No 1 will not exercise its "Right of First Refusal" and displacing it will provide the necessary ATC
8. If Request #1 has not yet been confirmed at the time of the acceptance of Request #2 (of longer duration), then Request #2 has priority with no Right of First Refusal offered to Request #1
9. When a subsequent request is for Firm service, once the Firm Request has been confirmed, all affected Non-Firm Requests will be displaced with no "Right of First Refusal" option offered

Flow Diagram for Offering Right of First Refusal

Hourly Non-Firm (HNF) Transmission Next Day (between 12:00 day prior and 00:00)

Fixed Hourly Can request up to 24 Consecutive Hours (1-24 Hours per Calendar Day)



Notes:

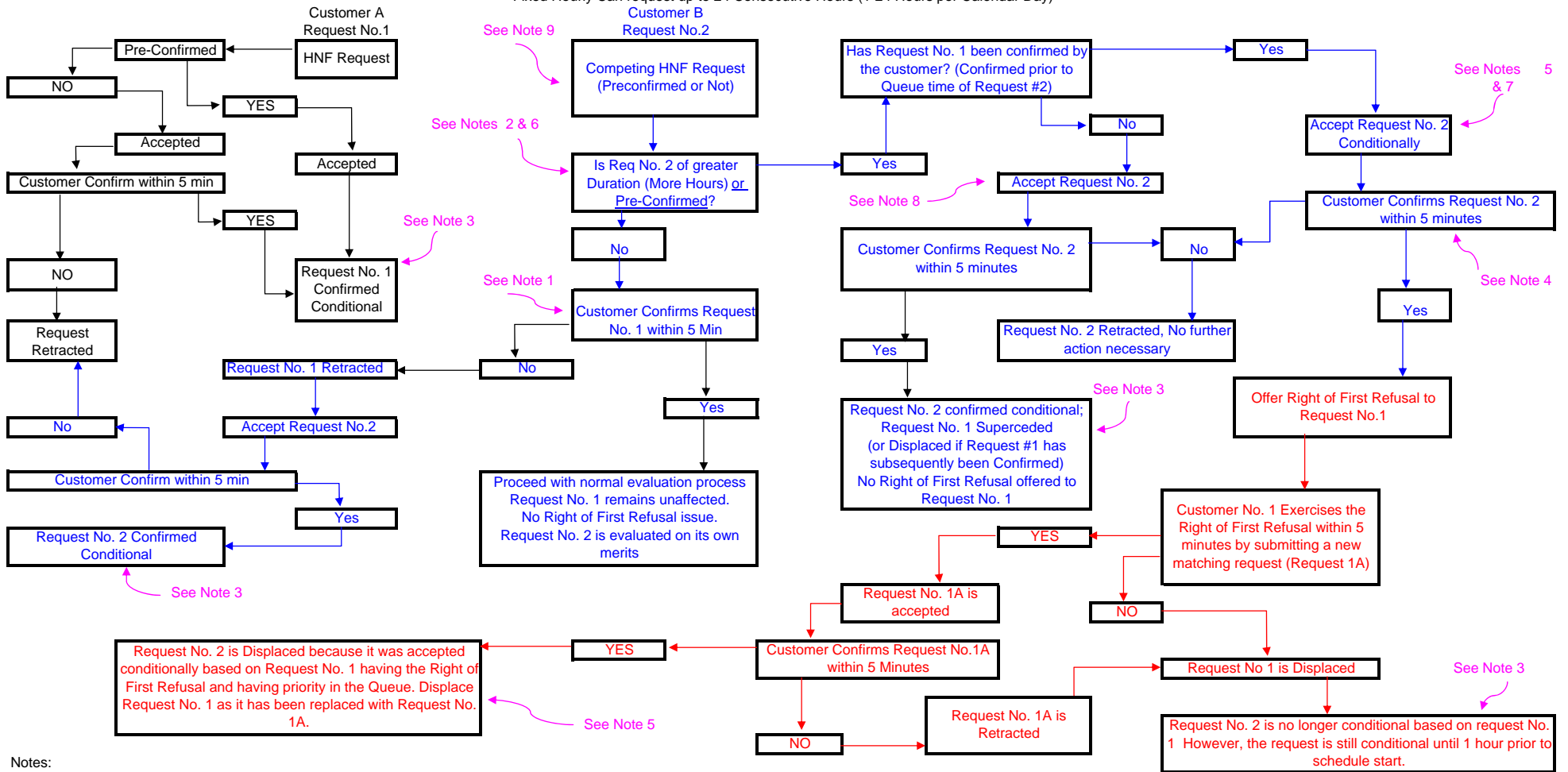
- Once a request has been confirmed, it shall not be preempted by a subsequent request of equal duration (even if for a higher price)
- A request is not considered to be of longer duration unless the Multiple Service Increments (in this case the individual hours of the request) are at (or greater than) the same level of capacity (same or more MW per hour). I.e.: A request is not considered Longer Term if the request is for 5 hours at 50 MW and 1 hour at 1 MW.
- The Right of First Refusal only applies as long as the request is conditional (In this case, up to 1 hour prior to schedule start). After this time, a request is no longer considered conditional, and cannot be displaced by a subsequent request of higher priority or longer duration.
- A Non-firm request is not entitled to the Right of First Refusal until the request has been confirmed.
- When Requests are accepted conditionally, displaced, or superseded, an entry shall be made in the providers comments, explaining the reason. If another request is involved in the conditional acceptance, displacement, or superseded action, the reservation number of that request shall also be included.
- Western currently Charges their "Up To" price for all transmission, and thus a bid for higher price would not apply when considering requests of equal duration. Western does not consider a request of equal duration to be for higher revenue, when the integrated MW of a competing request exceeds the capacity of the initial request.
- Conditional Acceptance of Request No 2 is based on the assumption Request No 1 will not exercise its "Right of First Refusal" and displacing it will provide the necessary ATC
- If Request #1 has not yet been confirmed at the time of the acceptance of Request #2 (of longer duration), then Request #2 has priority with no Right of First Refusal offered to Request #1
- Competing requests of Daily, Weekly or Monthly service do not apply due to the timing requirements. (Hourly Non-Firm requests can be submitted no earlier than 1200 of the day prior).

(For Western OATT Effective 12/1/2009)

Flow Diagram for Offering Right of First Refusal

Hourly Non-Firm (HNF) Transmission Current Day

Fixed Hourly Can request up to 24 Consecutive Hours (1-24 Hours per Calendar Day)



Notes:

1. Once a request has been confirmed, it shall not be preempted by a subsequent request of equal duration (even if for a higher price)
2. A request is not considered to be of longer duration unless the Multiple Service Increments (in this case the individual hours of the request) are at (or greater than) the same level of capacity (same or more MW per hour). I.e.: A request is not considered Longer Term if the request is for 5 hours at 50 MW and 1 hour at 1 MW.
3. The Right of First Refusal only applies as long as the request is conditional (In this case, up to 1 hour prior to schedule start). After this time, a request is no longer considered conditional, and cannot be displaced by a subsequent request of higher priority or longer duration.
4. A Non-firm request is not entitled to the Right of First Refusal until the request has been confirmed.
5. When Requests are accepted conditionally, displaced, or superseded, an entry shall be made in the providers comments, explaining the reason. If another request is involved in the conditional acceptance, displacement, or superseded action, the reservation number of that request shall also be included.
6. Western currently Charges their "Up To" price for all transmission, and thus a bid for higher price would not apply when considering requests of equal duration. Western does not consider a request of equal duration to be for higher revenue, when the integrated MW of a competing request exceeds the capacity of the initial request.
7. Conditional Acceptance of Request No 2 is based on the assumption Request No 1 will not exercise its "Right of First Refusal" and displacing it will provide the necessary ATC
8. If Request #1 has not yet been confirmed at the time of the acceptance of Request #2 (of longer duration), then Request #2 has priority with no Right of First Refusal offered to Request #1
9. Competing requests of Daily, Weekly or Monthly do not apply due to the timing requirements. (Hourly Non-Firm requests can be submitted no earlier than 1200 of the day prior).

(For Western OATT Effective 12/1/2009)

Version: 11/29/2009
Effective: 12/01/2009

Notes:

1. UGPR does not offer Daily Firm service under the OATT, and therefore the DF worksheet is not appli

icable.