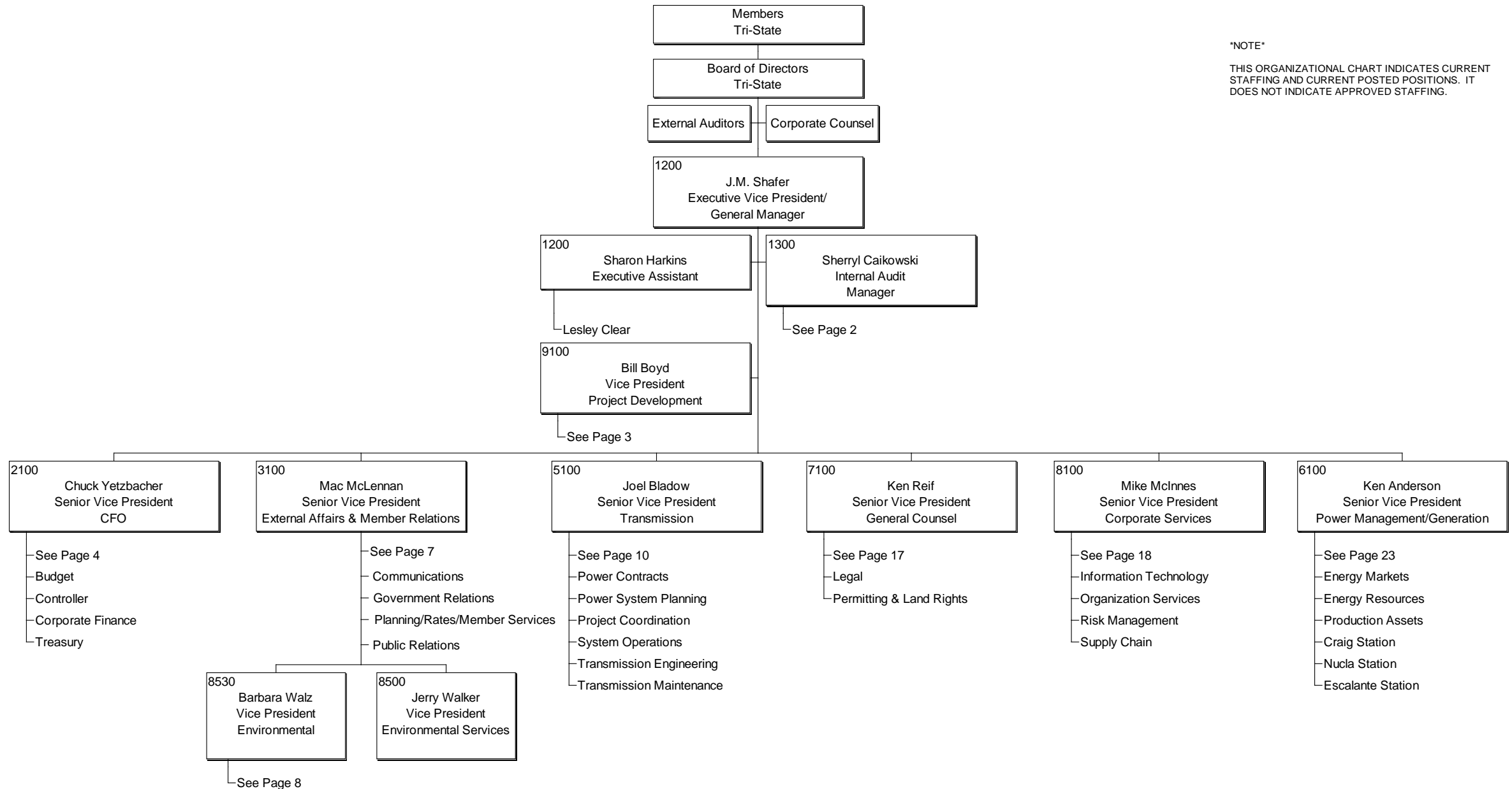


# TRI-STATE GENERATION AND TRANSMISSION ASSOCIATION, INC

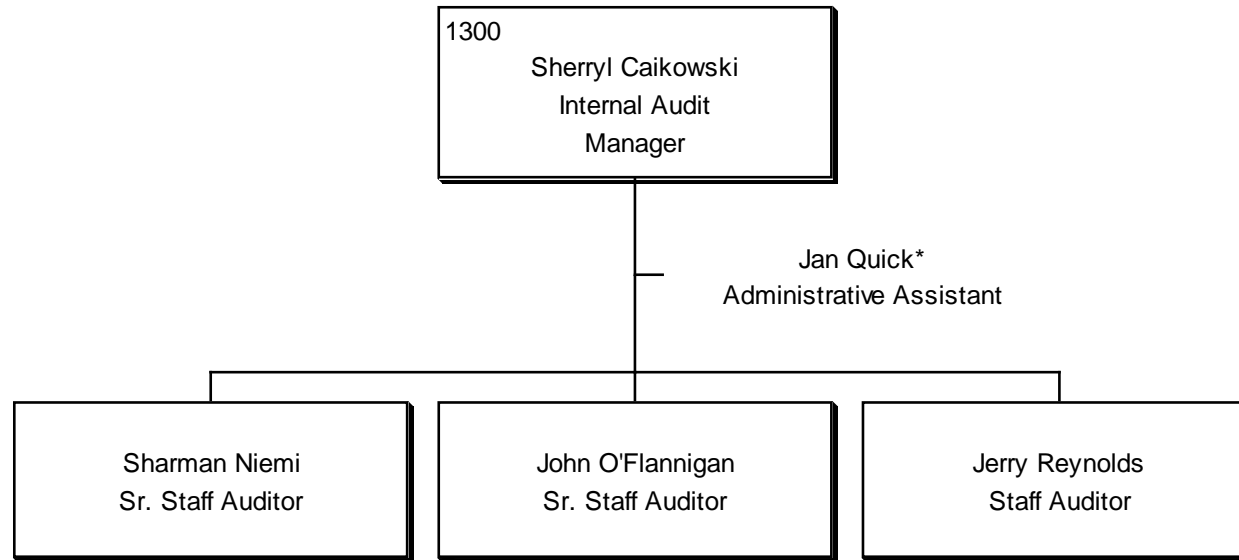
## ORGANIZATION STRUCTURE

### JULY, 2007

\*NOTE\*  
THIS ORGANIZATIONAL CHART INDICATES CURRENT STAFFING AND CURRENT POSTED POSITIONS. IT DOES NOT INDICATE APPROVED STAFFING.

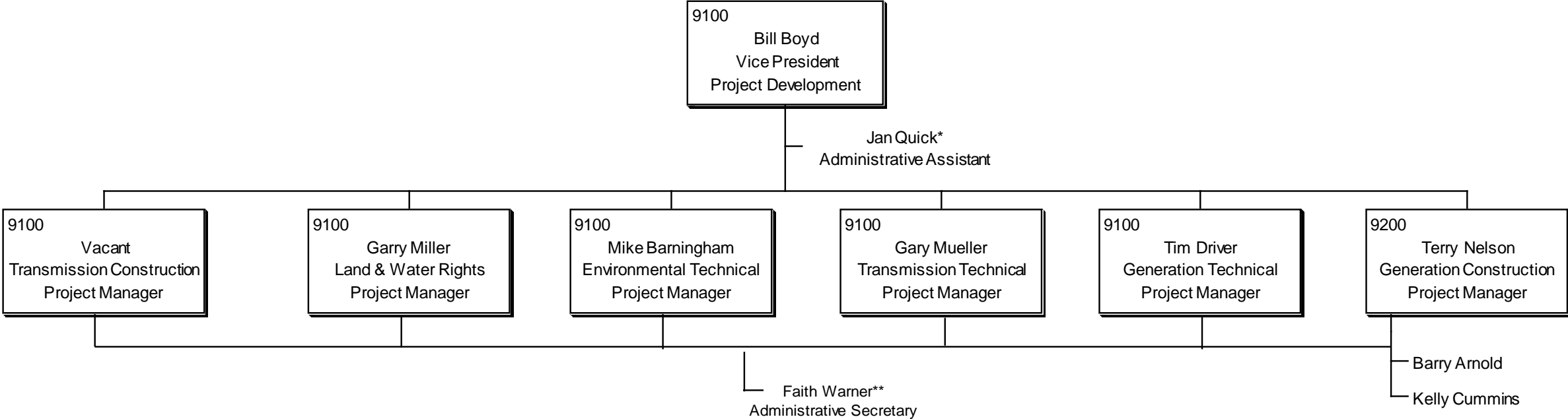


INTERNAL AUDIT  
ORGANIZATION STRUCTURE  
JULY, 2007



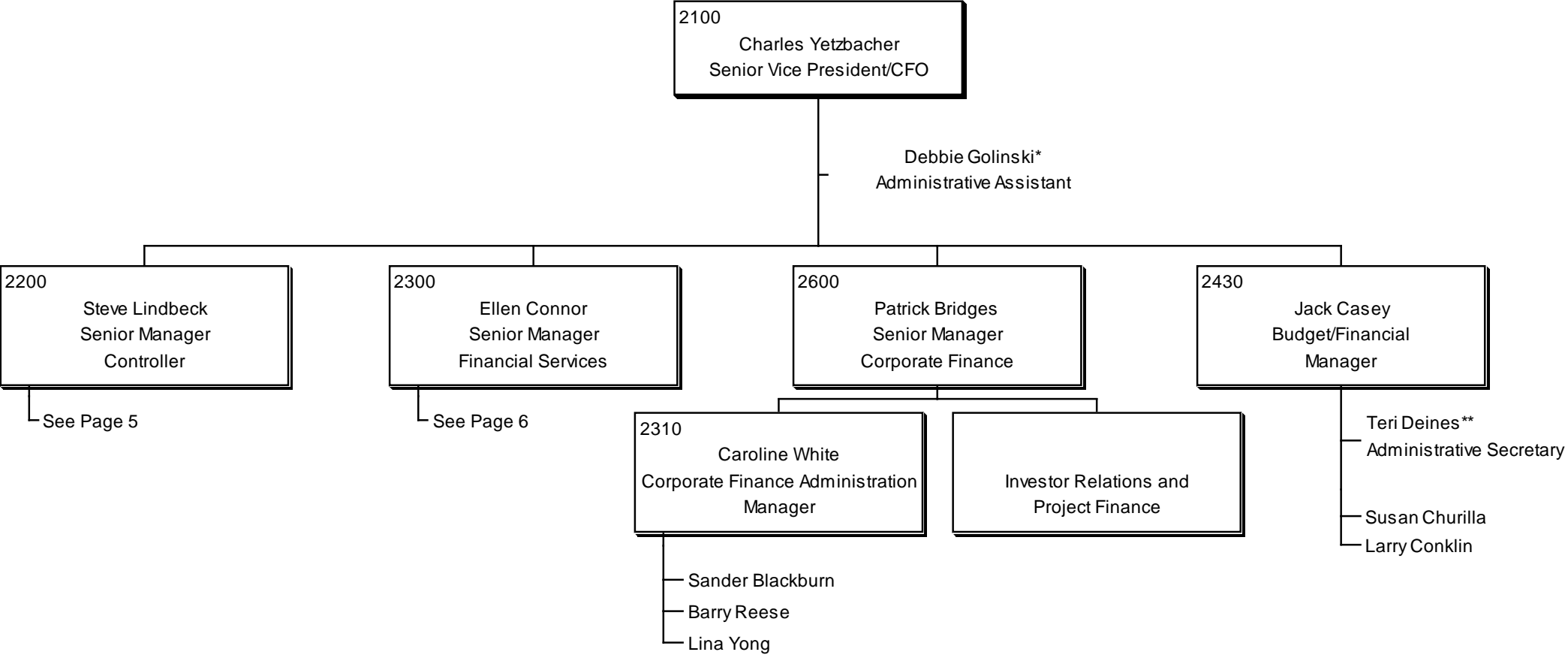
\* Also supports Sr. Vice President, Power Management & Generation, Sr. Vice President, Transmission, and Vice President, Project Development

PROJECT DEVELOPMENT  
ORGANIZATION STRUCTURE  
JULY, 2007



\* Also supports Sr. Vice President, Power Management & Generation, Sr. Vice President, Transmission and Internal Audit Manager  
\*\*Also supports Public Relations Manager

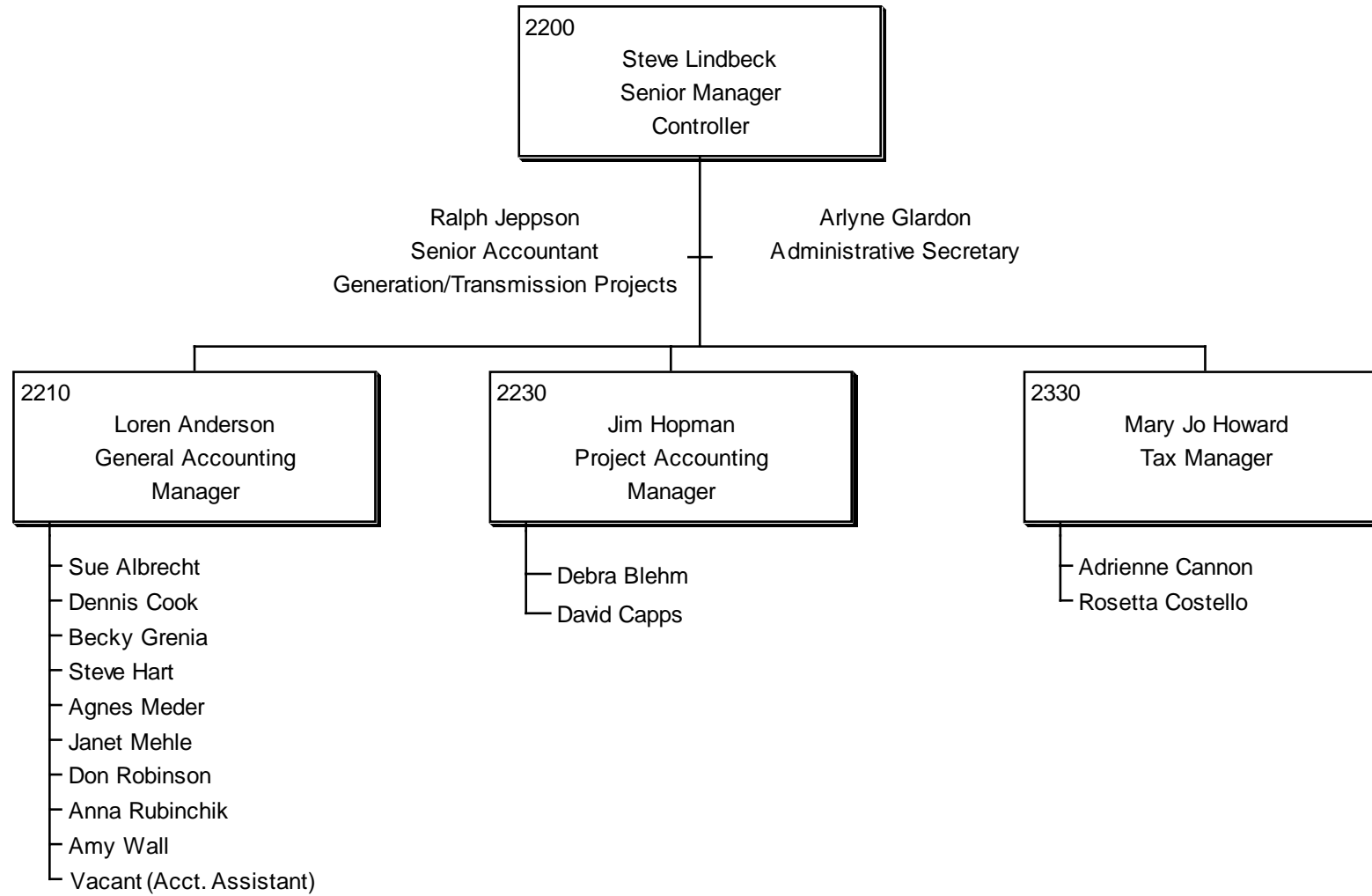
FINANCE & ACCOUNTING  
 ORGANIZATION STRUCTURE  
 JULY, 2007



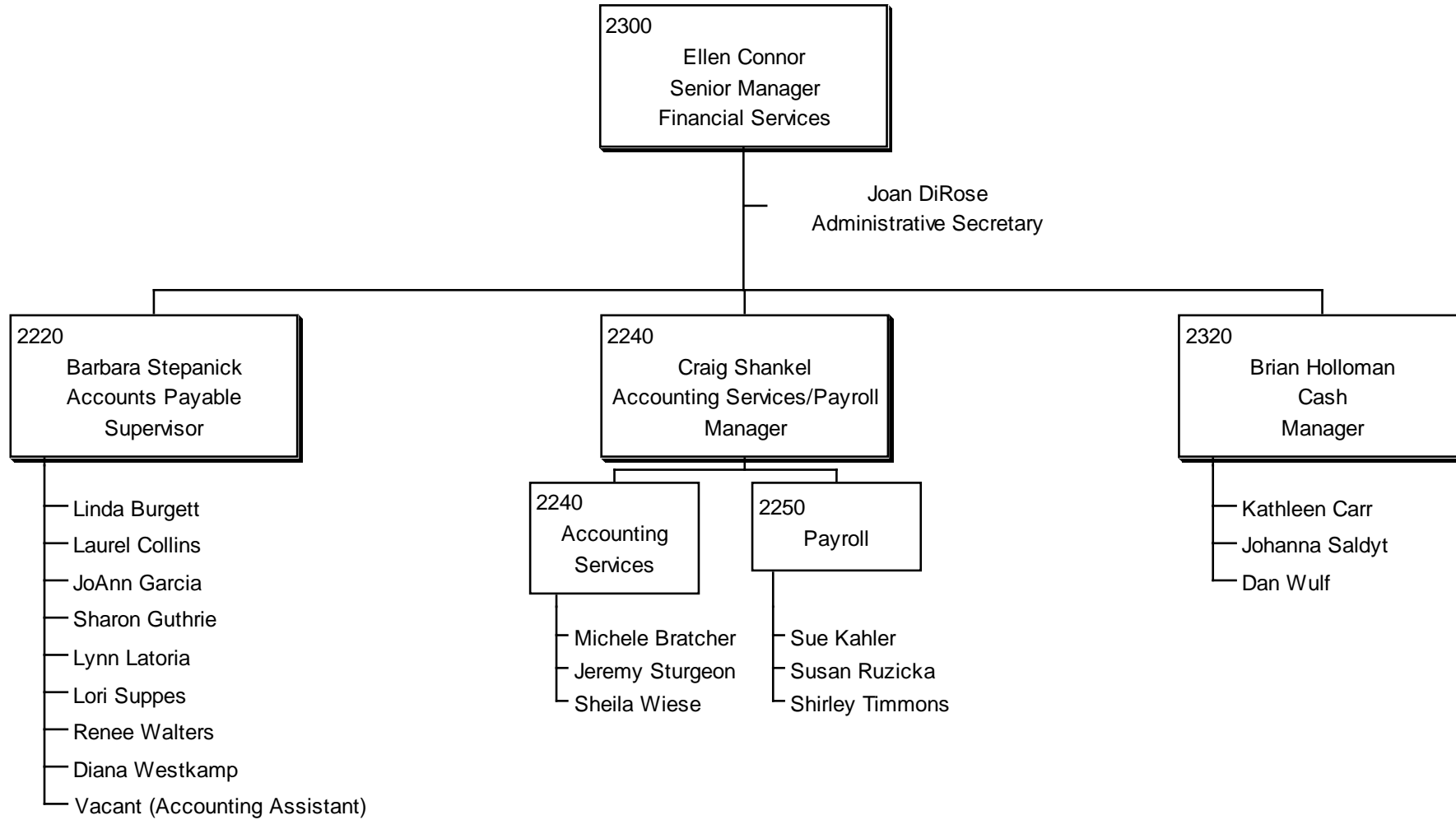
\* Also supports Senior Vice President, General Counsel and Vice President, Environmental Services

\*\*Also supports Facilities Manager

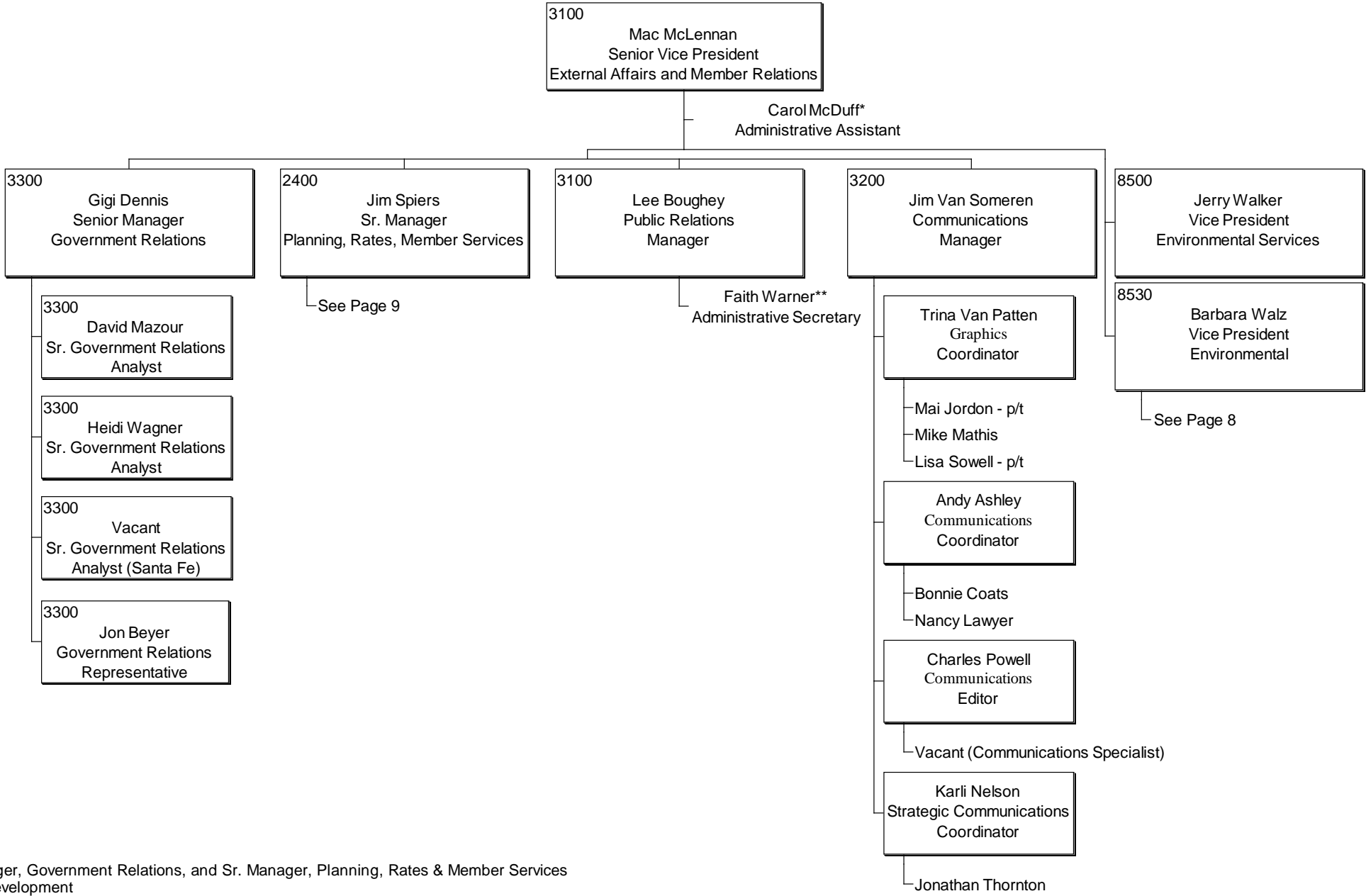
CONTROLLER  
ORGANIZATION STRUCTURE  
JULY, 2007



FINANCE  
ORGANIZATION STRUCTURE  
JULY, 2007

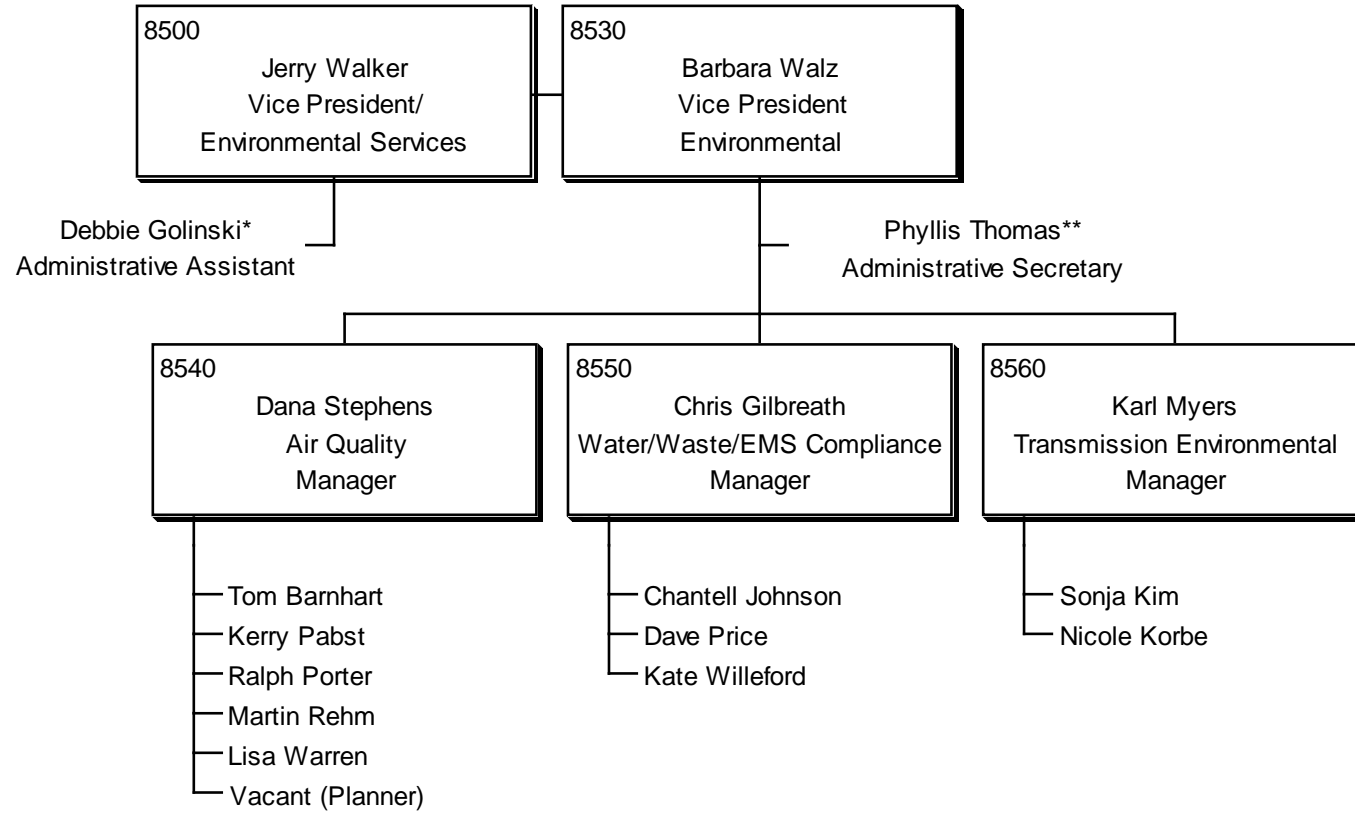


# EXTERNAL AFFAIRS ORGANIZATION STRUCTURE JULY, 2007



\* Also supports Sr. Manager, Government Relations, and Sr. Manager, Planning, Rates & Member Services  
 \*\* Also supports Project Development  
 p/t=part-time

ENVIRONMENTAL SERVICES  
 ORGANIZATION CHART  
 JULY, 2007

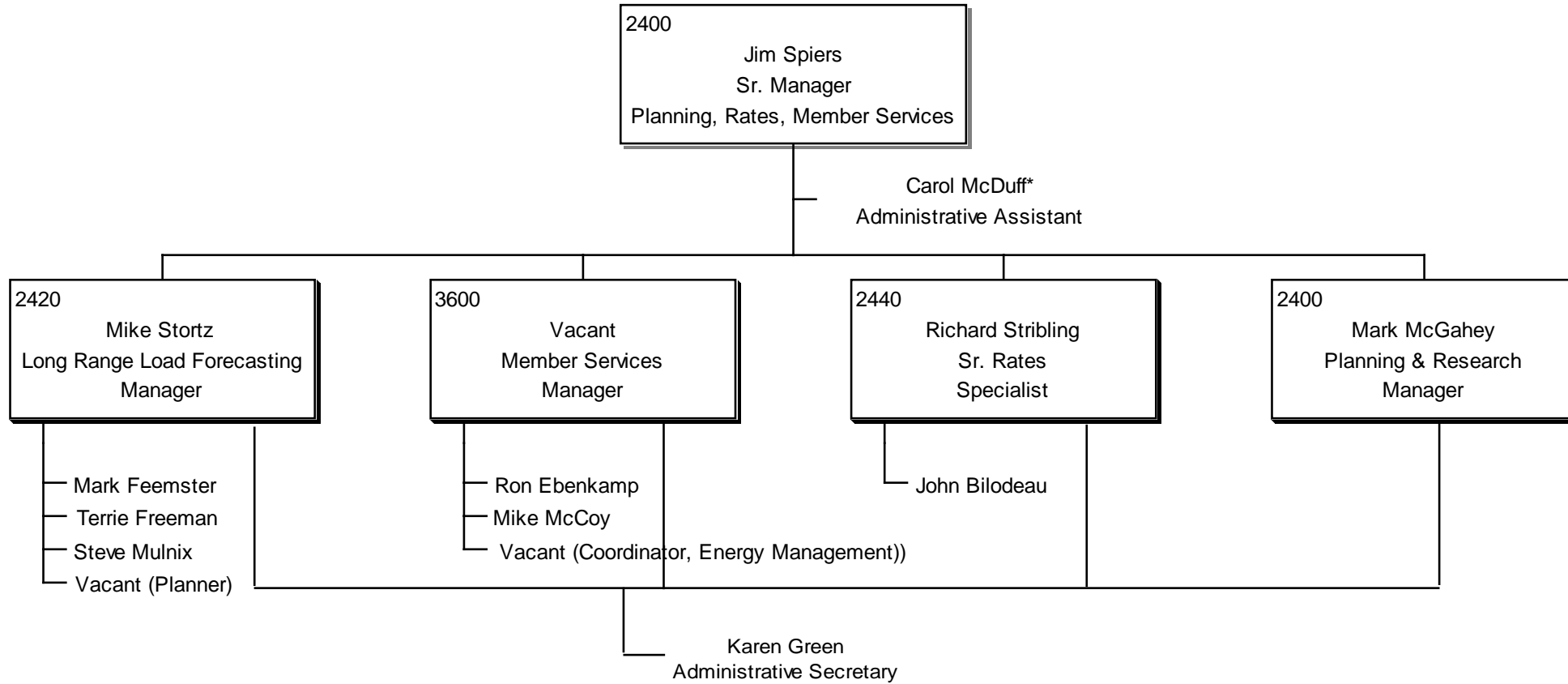


\* Also supports Sr. Vice President, CFO; Sr. Vice President, General Council; and Sr. Manager, Corporate Finance

\*\* Also supports Safety/Insurance Manager

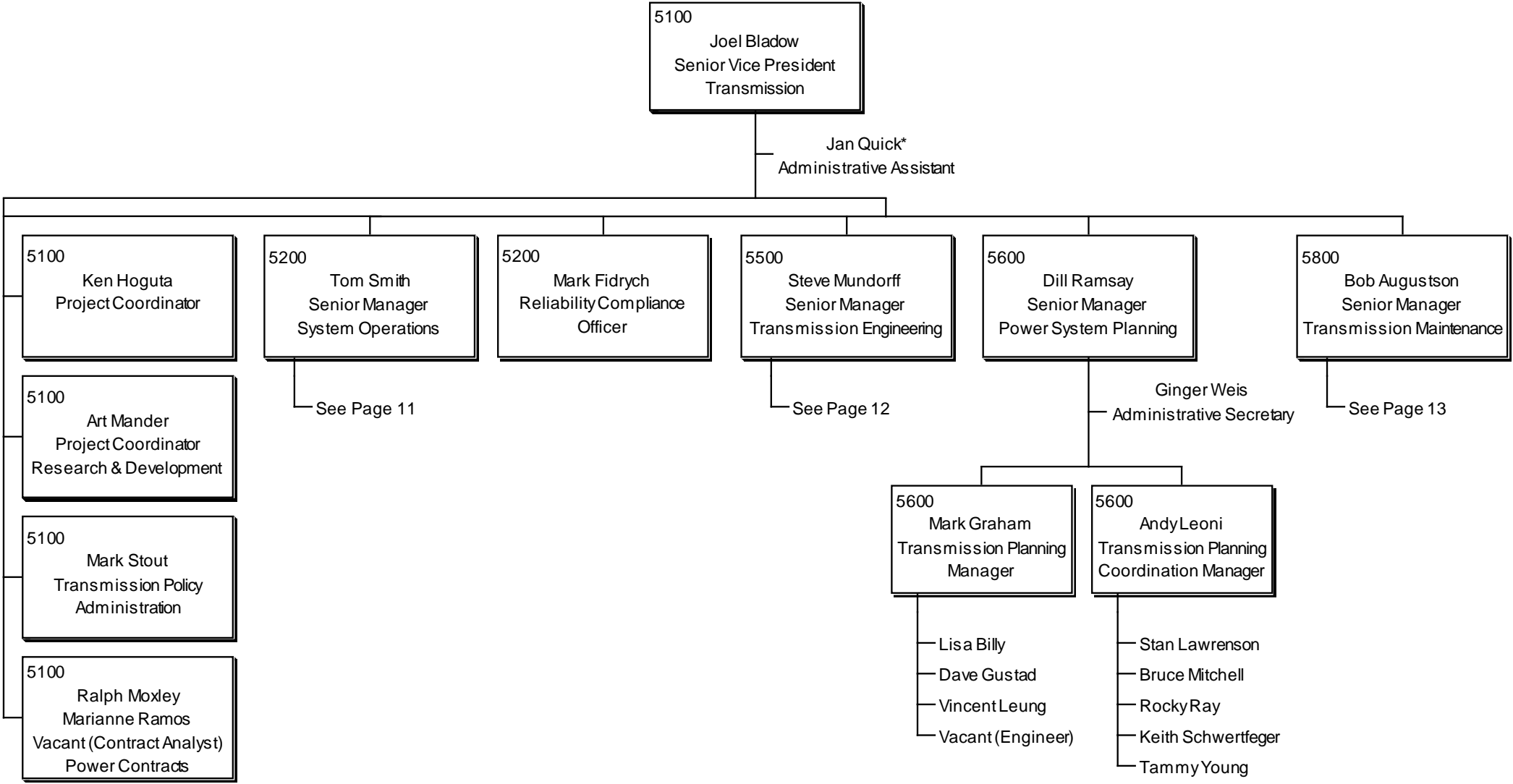


PLANNING, RATES, MEMBER SERVICES  
ORGANIZATION STRUCTURE  
JULY, 2007



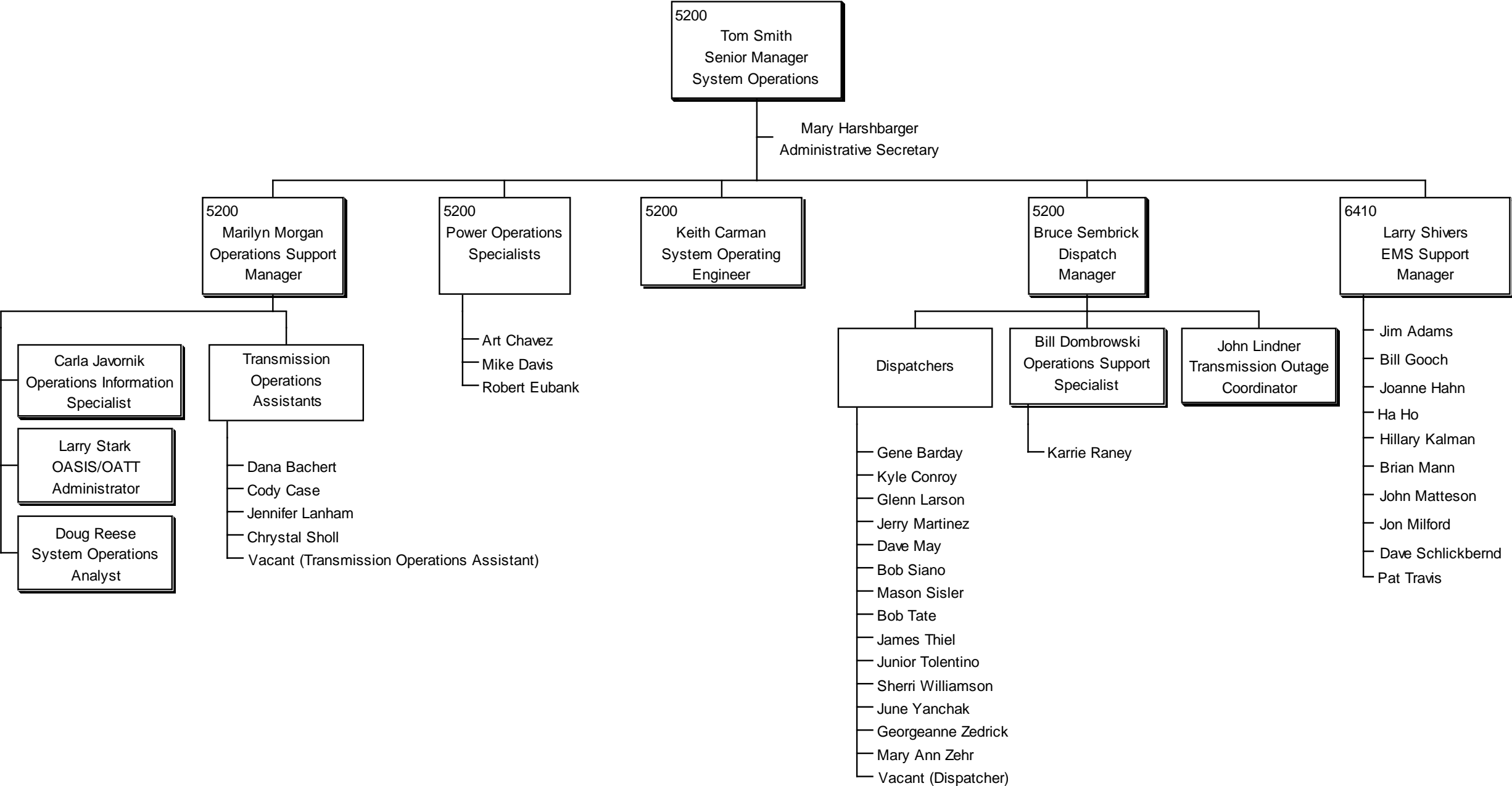
\* Also supports Sr. Vice President, External Affairs and Member Relations, and Sr. Manager, Government Relations

TRANSMISSION  
ORGANIZATION STRUCTURE  
JULY, 2007

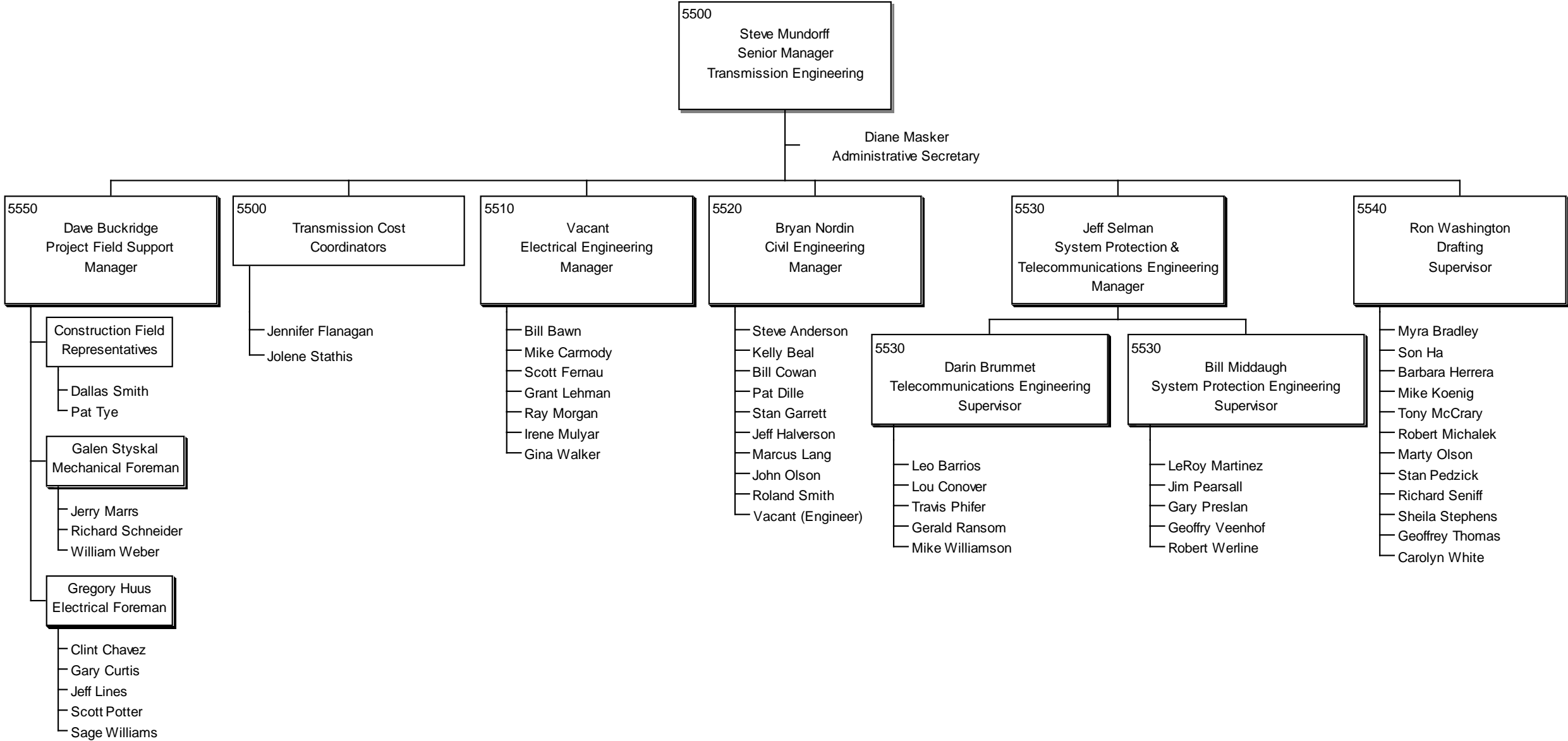


\* Also supports Senior Vice President, Power Management & Generation, Vice President, Project Development and Internal Audit Manager

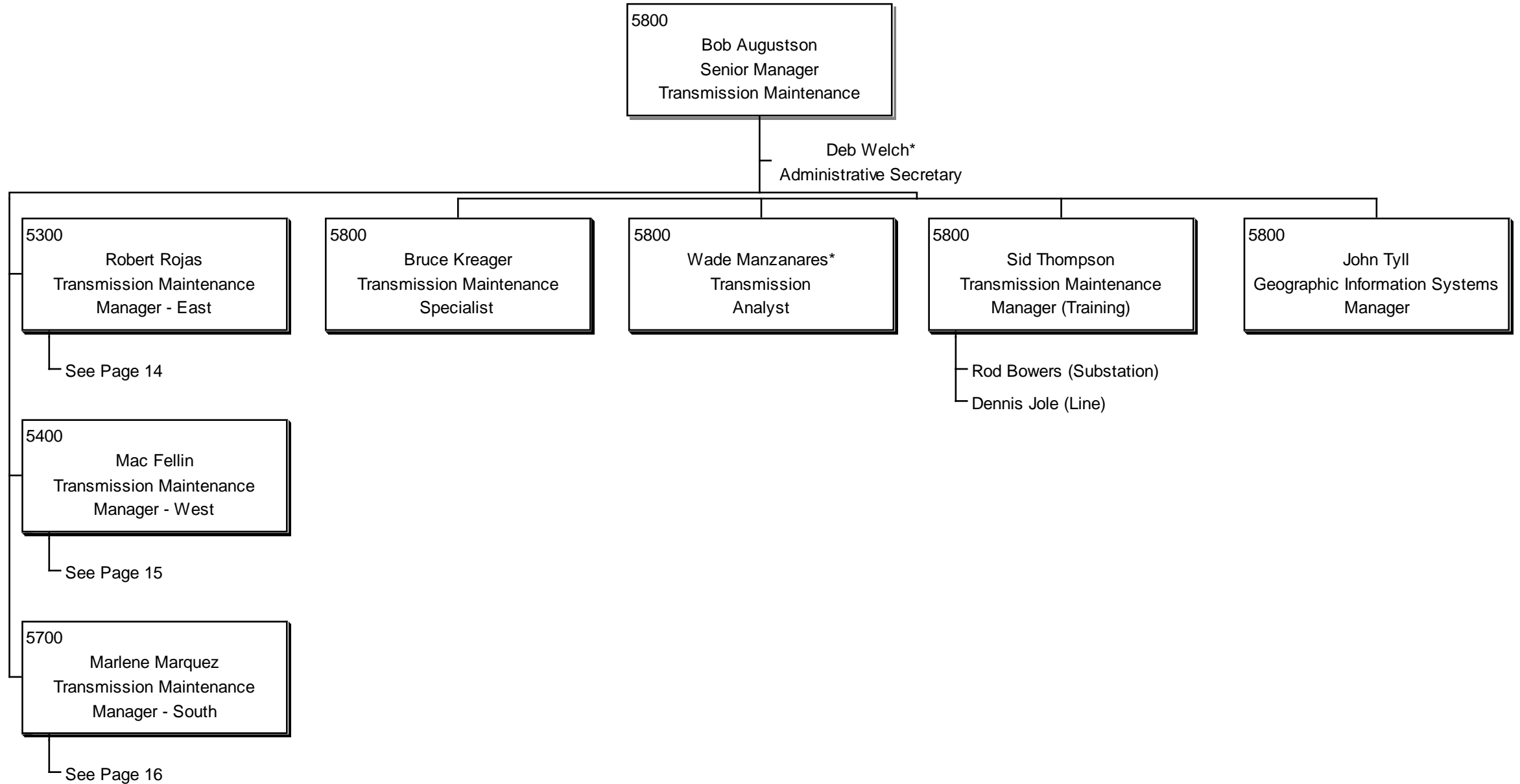
SYSTEM OPERATIONS  
ORGANIZATION STRUCTURE  
JULY, 2007



TRANSMISSION ENGINEERING  
ORGANIZATION STRUCTURE  
JULY, 2007

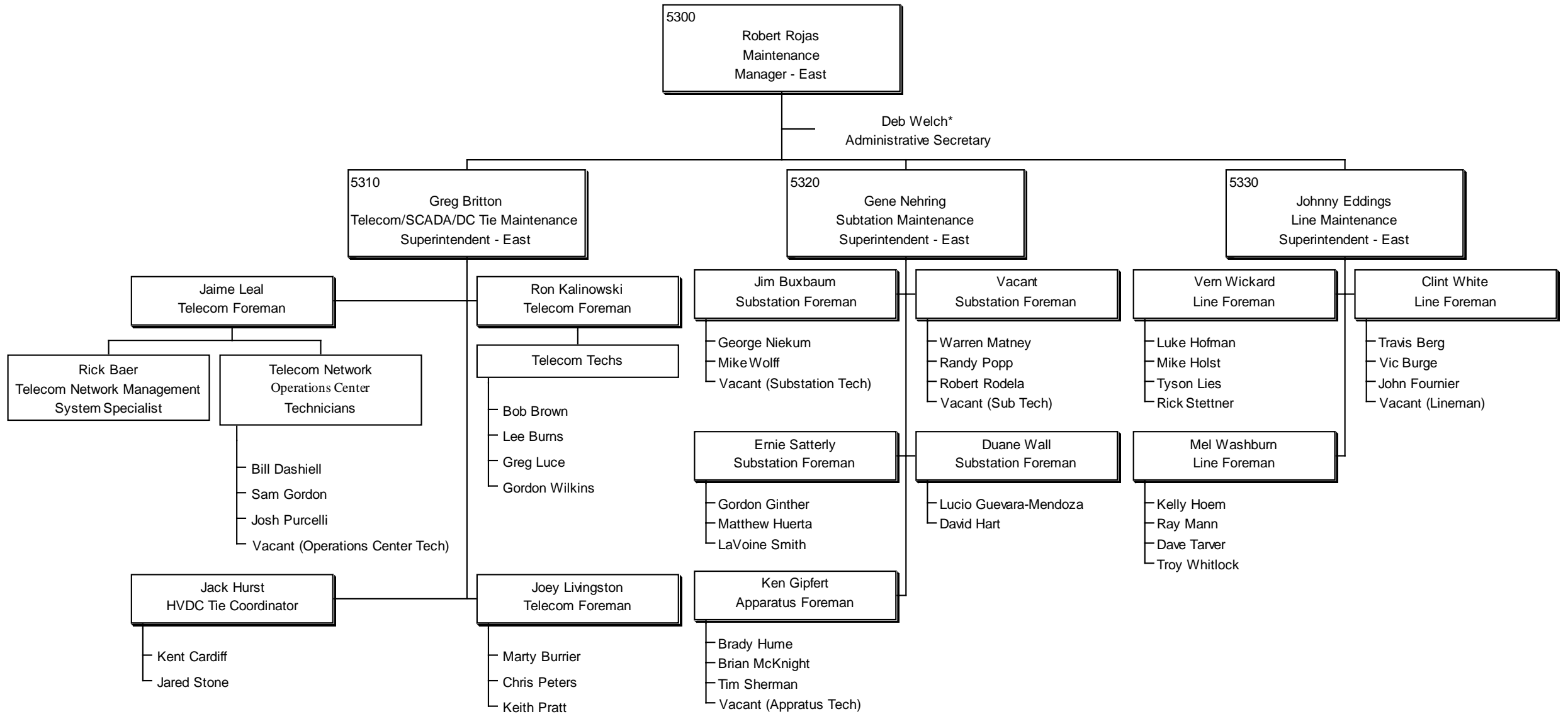


TRANSMISSION & MAINTENANCE  
 ORGANIZATIONAL STRUCTURE  
 JULY, 2007



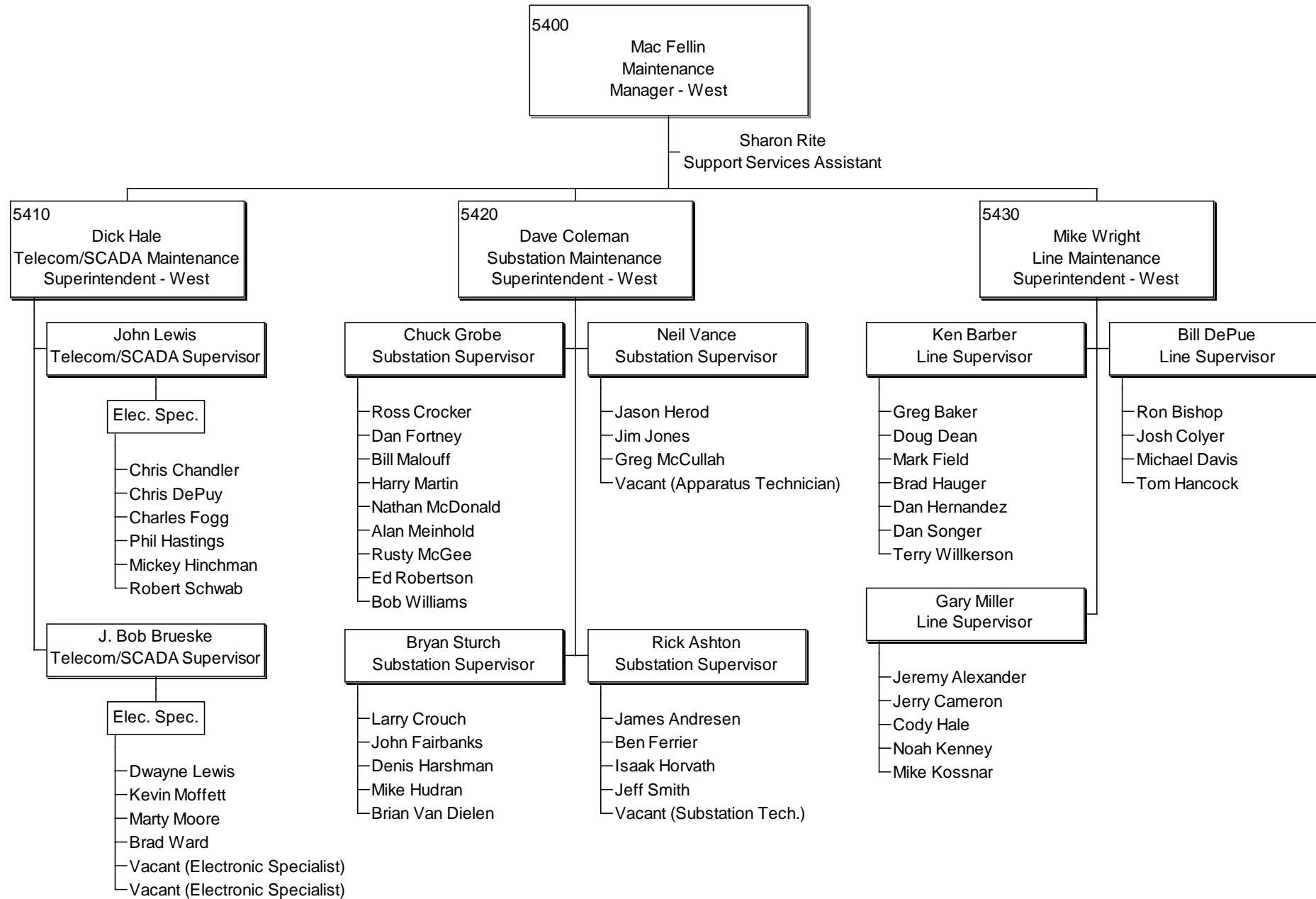
\* Also supports Transmission Maintenance Manager - East

**TRANSMISSION MAINTENANCE - EAST  
ORGANIZATION STRUCTURE  
JULY, 2007**



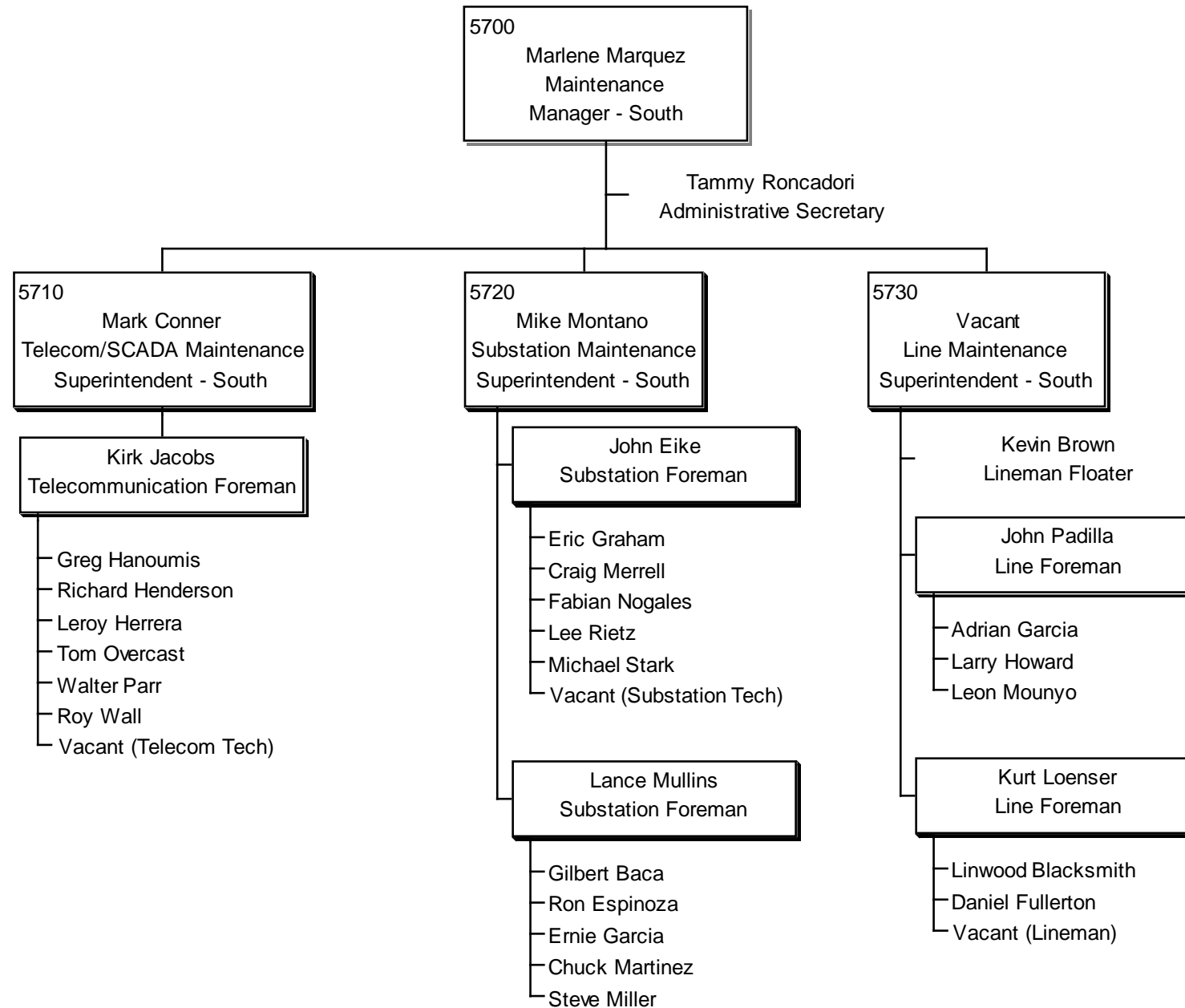
\*Also supports Sr. Manager, Transmission & Maintenance

# TRANSMISSION MAINTENANCE - WEST ORGANIZATION STRUCTURE JULY, 2007



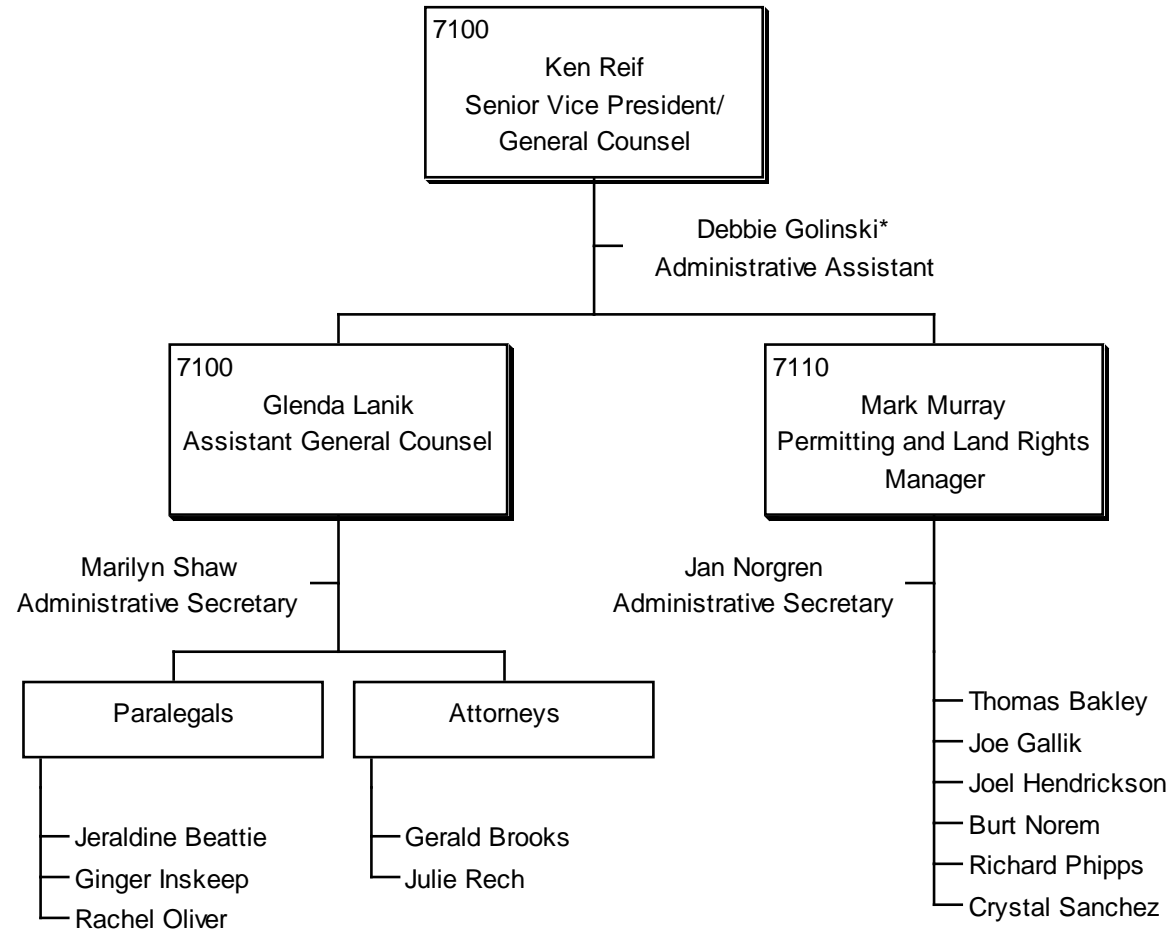
\*Also supports Transmission Maintenance Manager-East and Transmission Maintenance Manager-South

TRANSMISSION MAINTENANCE - SOUTH  
ORGANIZATION STRUCTURE  
JULY, 2007



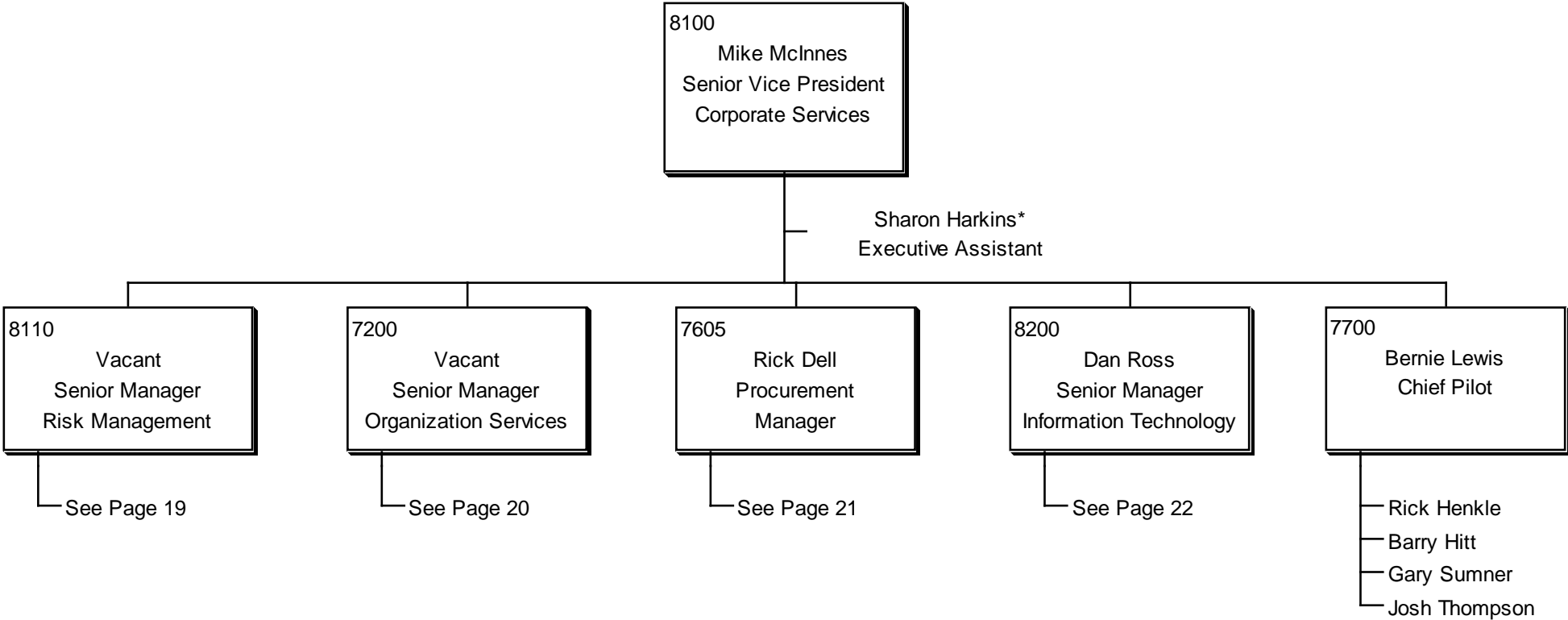


GENERAL COUNSEL  
ORGANIZATION STRUCTURE  
JULY, 2007



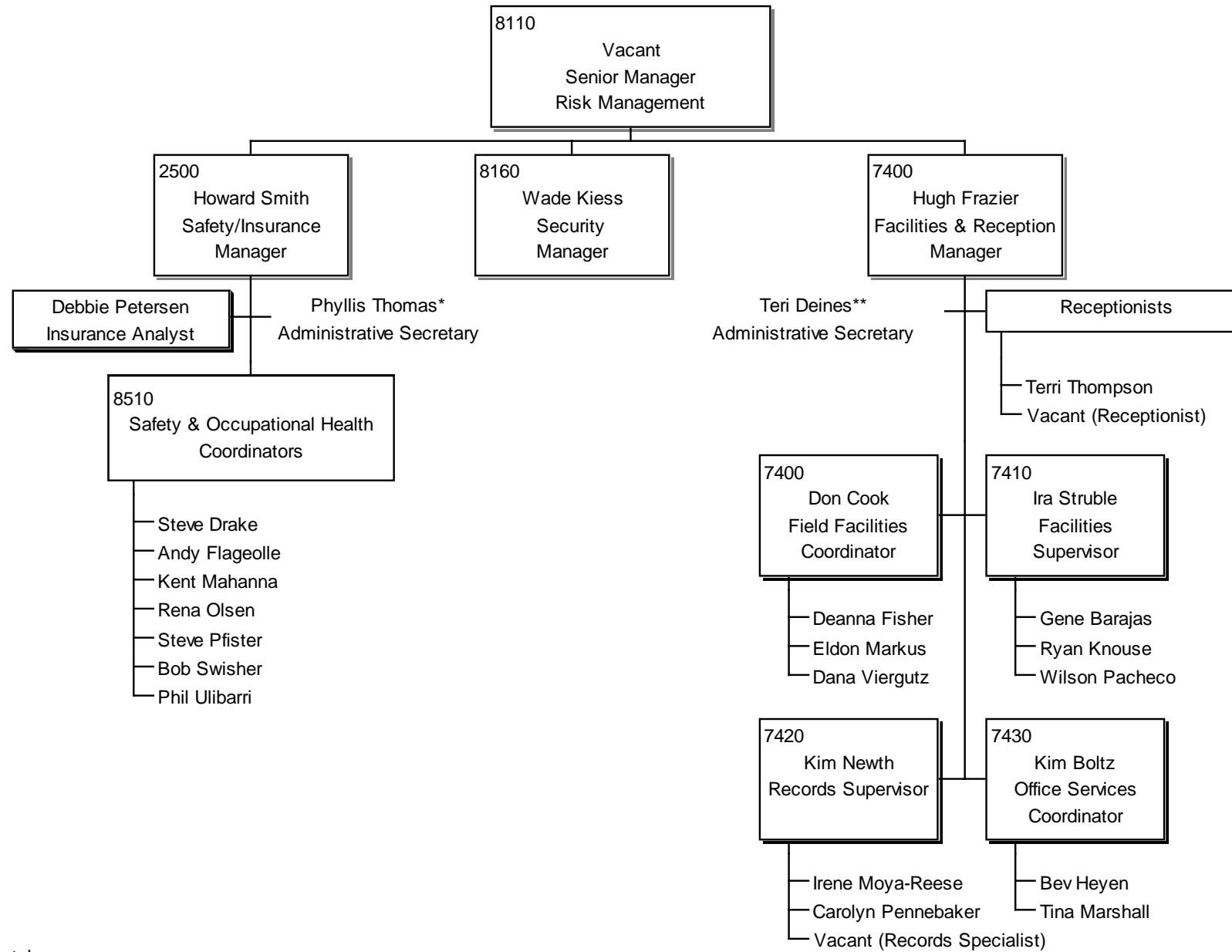
\* Also supports Senior Vice President, CFO, and Vice President, Environmental Services, Sr. Manager, Corporate Finance

CORPORATE SERVICES  
ORGANIZATION STRUCTURE  
JULY, 2007



\*Also supports Executive Vice President/General Manager

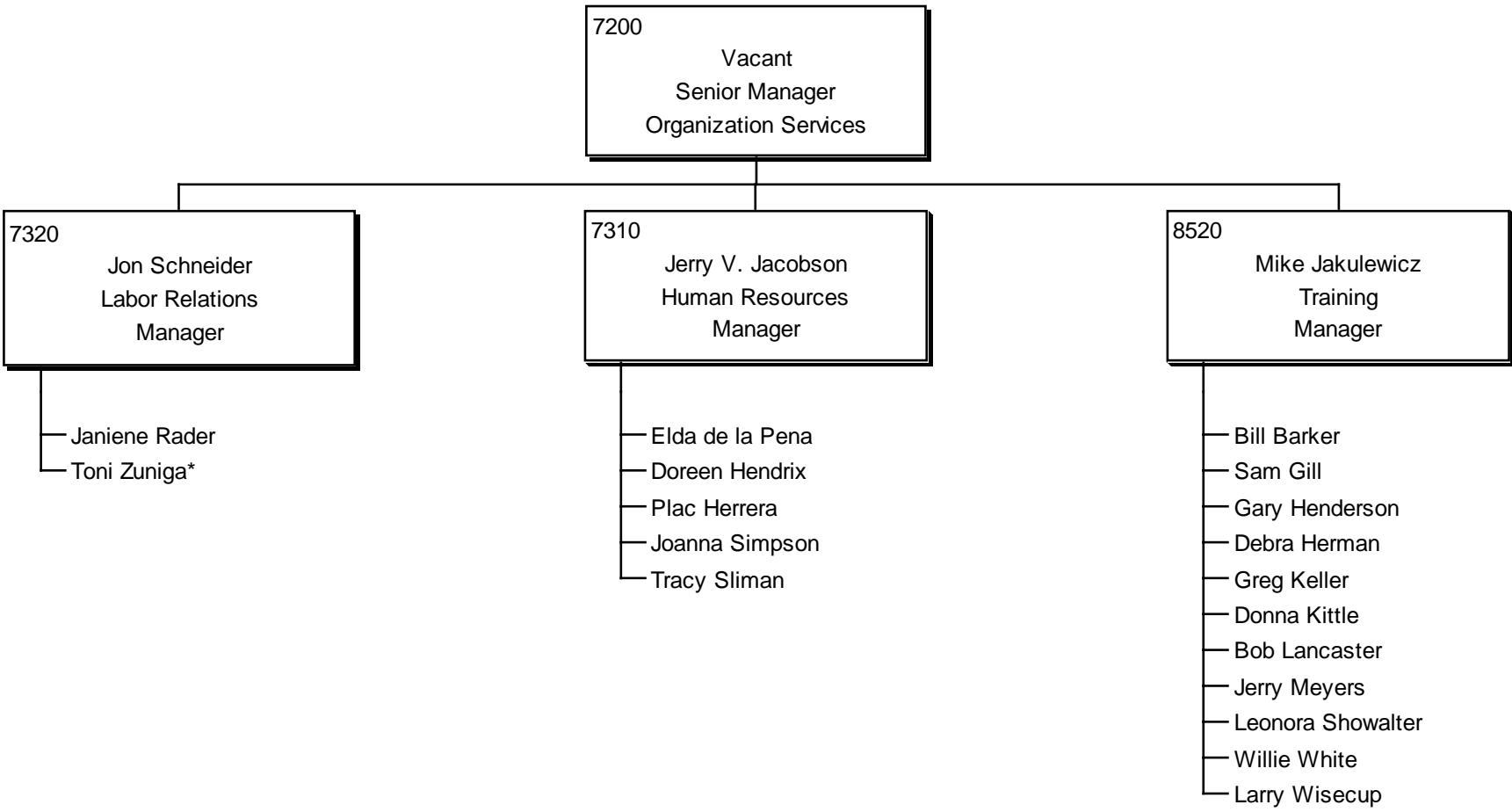
RISK MANAGEMENT  
 ORGANIZATION STRUCTURE  
 JULY, 2007



\* Also supports Vice President, Environmental

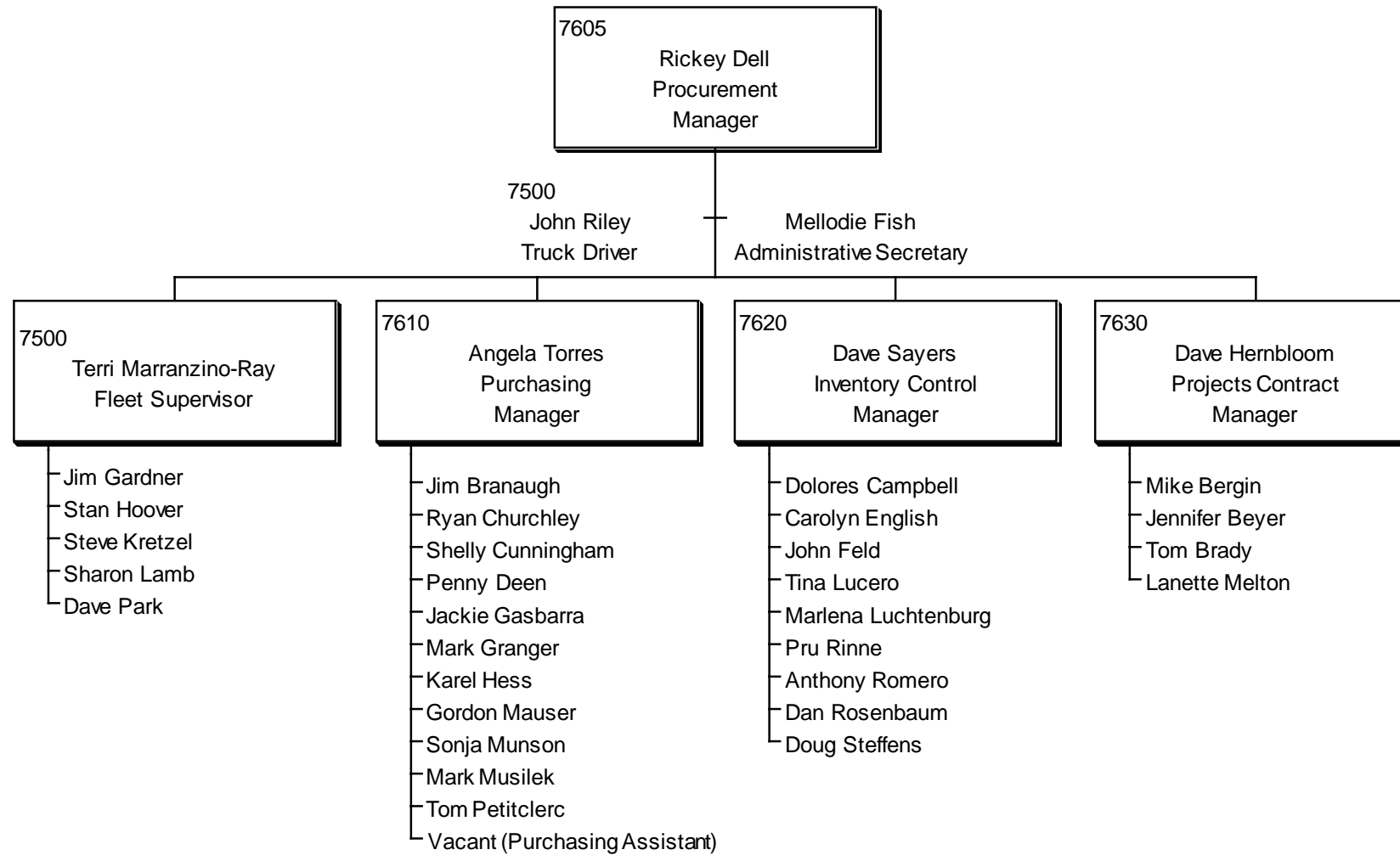
\*\* Also supports Budget/Financial Planning Manager

ORGANIZATION SERVICES  
ORGANIZATION STRUCTURE  
JULY, 2007

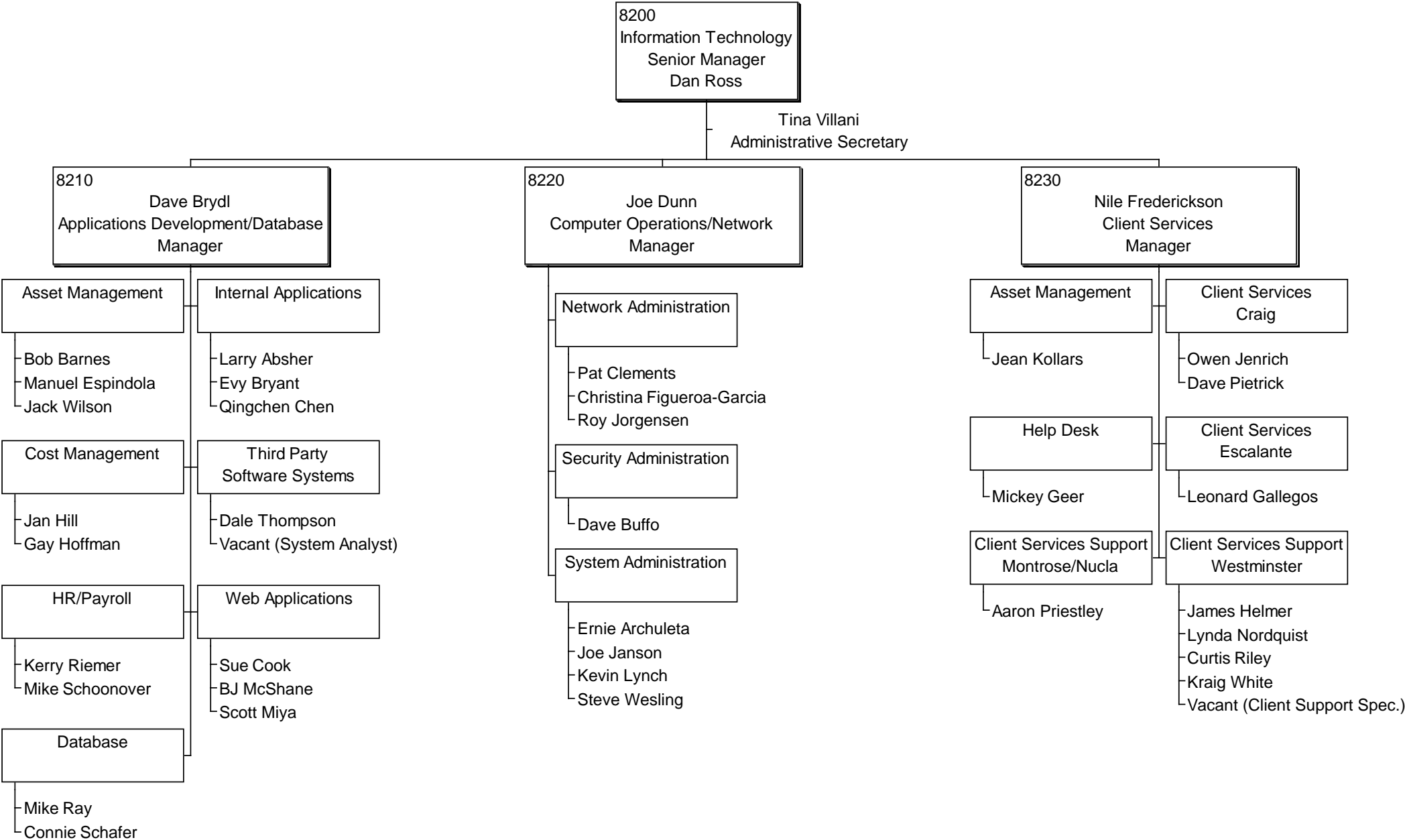


\* Also supports Human Resources Manager

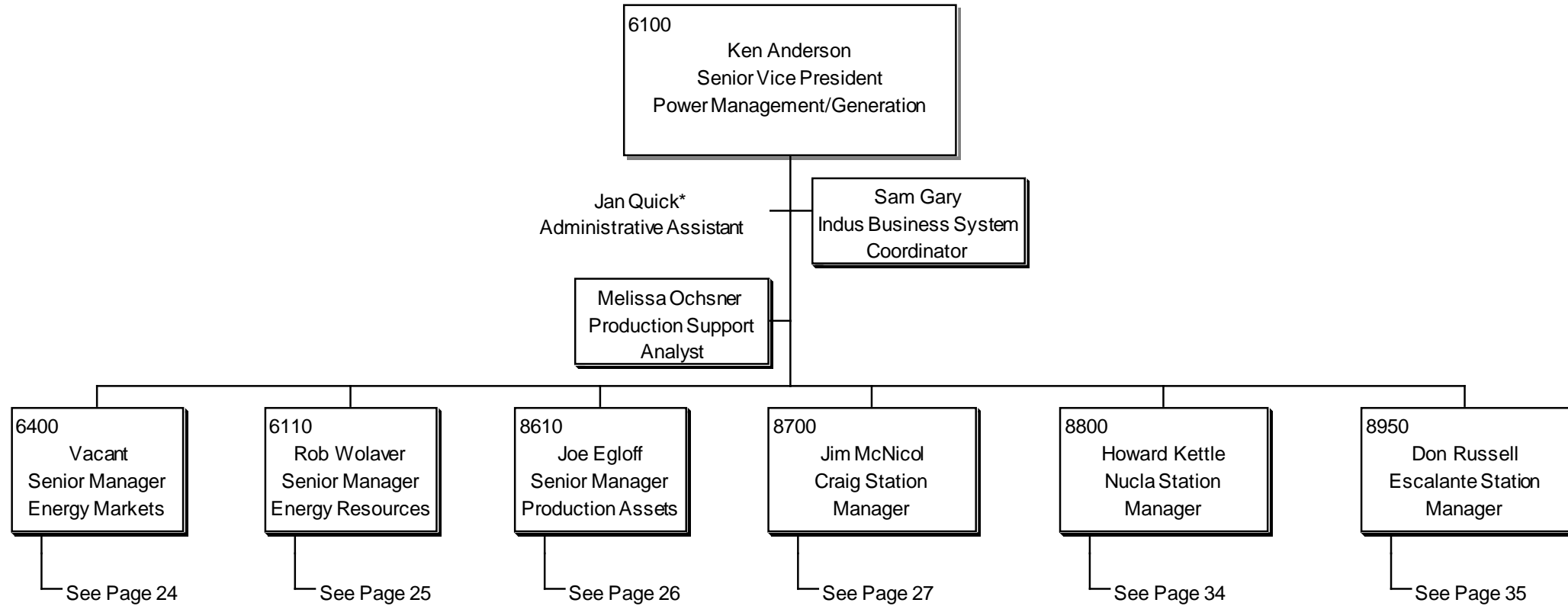
SUPPLY CHAIN  
ORGANIZATION STRUCTURE  
JULY, 2007



# INFORMATION TECHNOLOGY ORGANIZATION STRUCTURE JULY, 2007

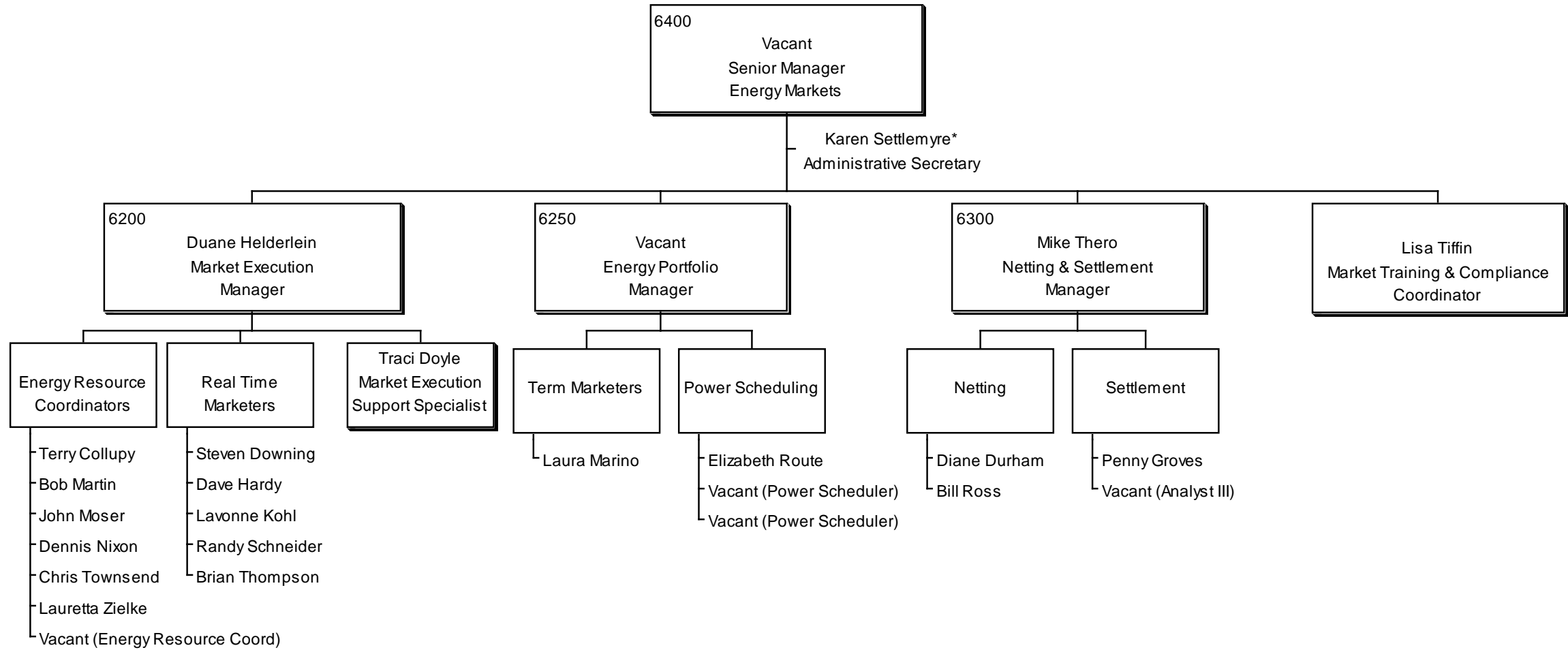


POWER MANAGEMENT & GENERATION  
ORGANIZATION STRUCTURE  
JULY, 2007



\* Also supports Senior Vice President, Transmission and Vice President, Project Development

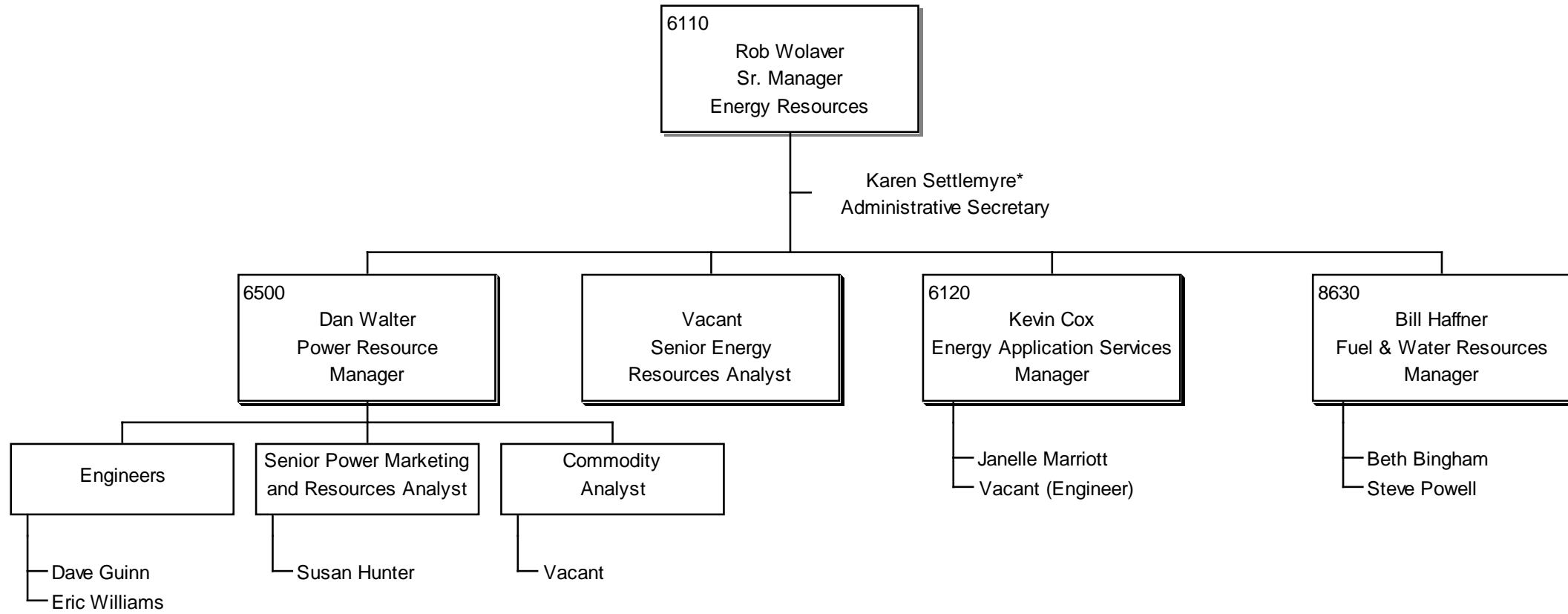
ENERGY MARKETS  
 ORGANIZATION STRUCTURE  
 JULY, 2007



\* Also supports Sr. Manager, Energy Resources

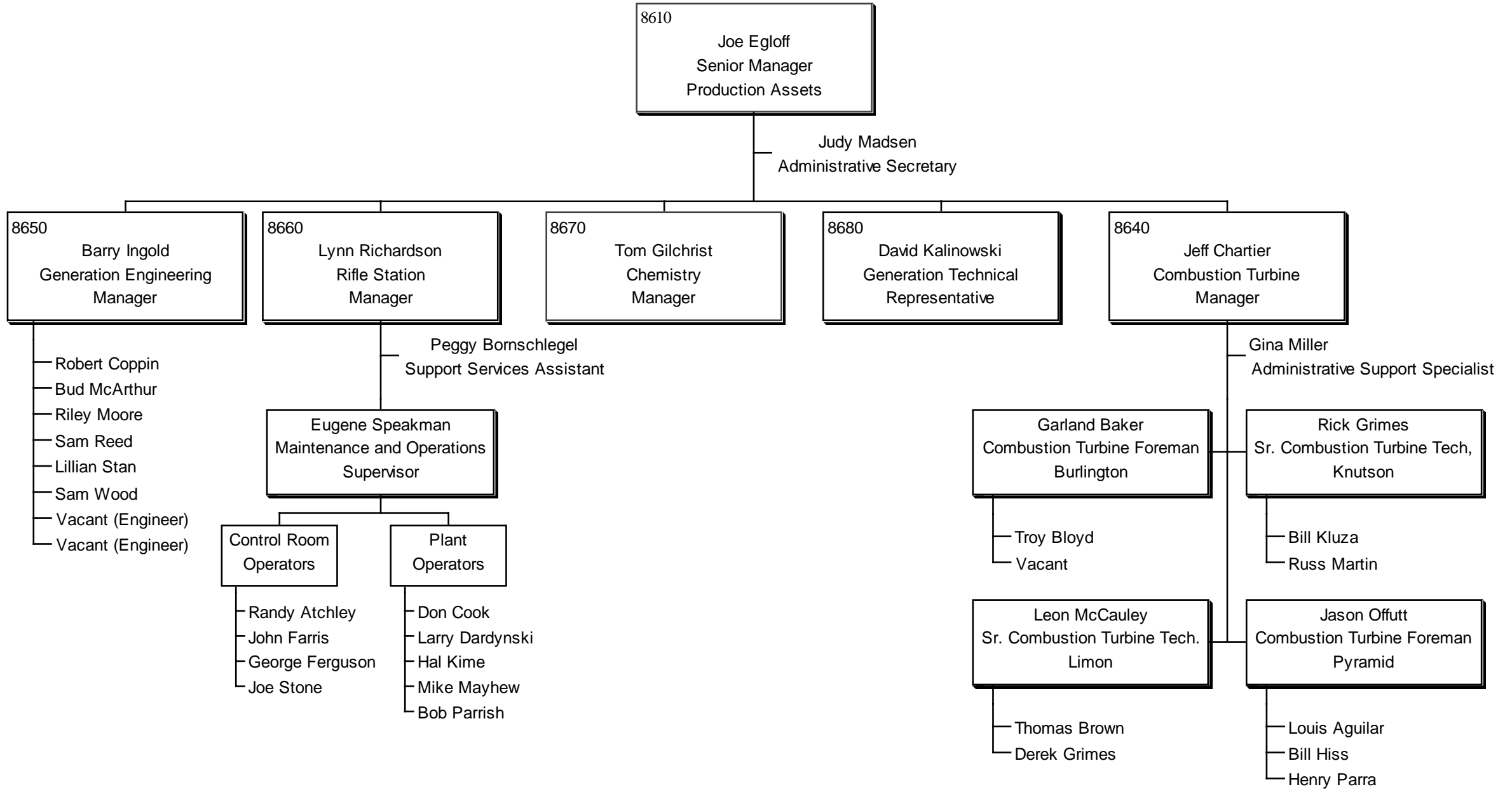


ENERGY RESOURCES  
ORGANNIZATION STRUCTURE  
JULY, 2007

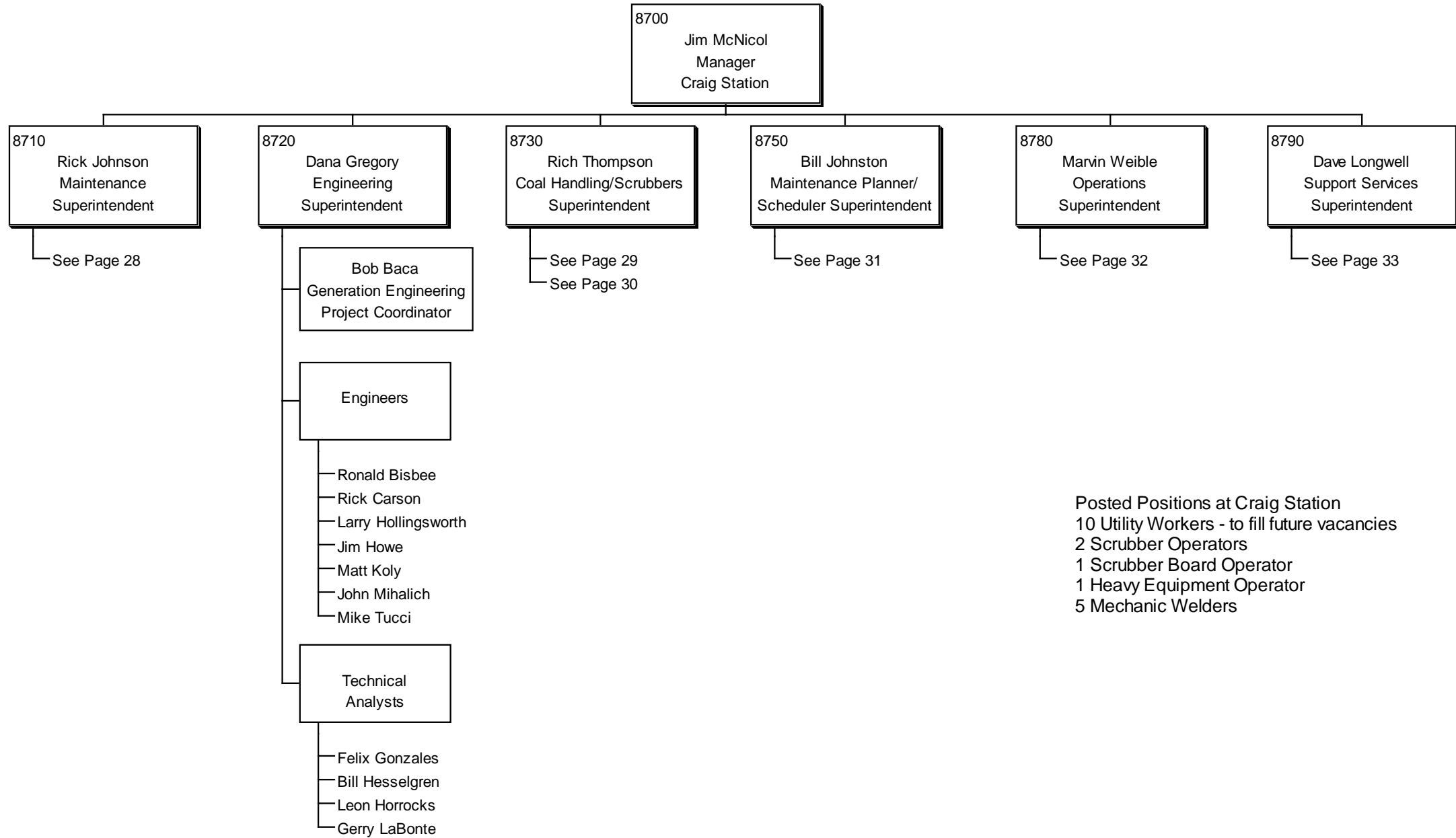


\*Also supports Energy Markets

PRODUCTION ASSETS  
 ORGANIZATION STRUCTURE  
 JULY, 2007



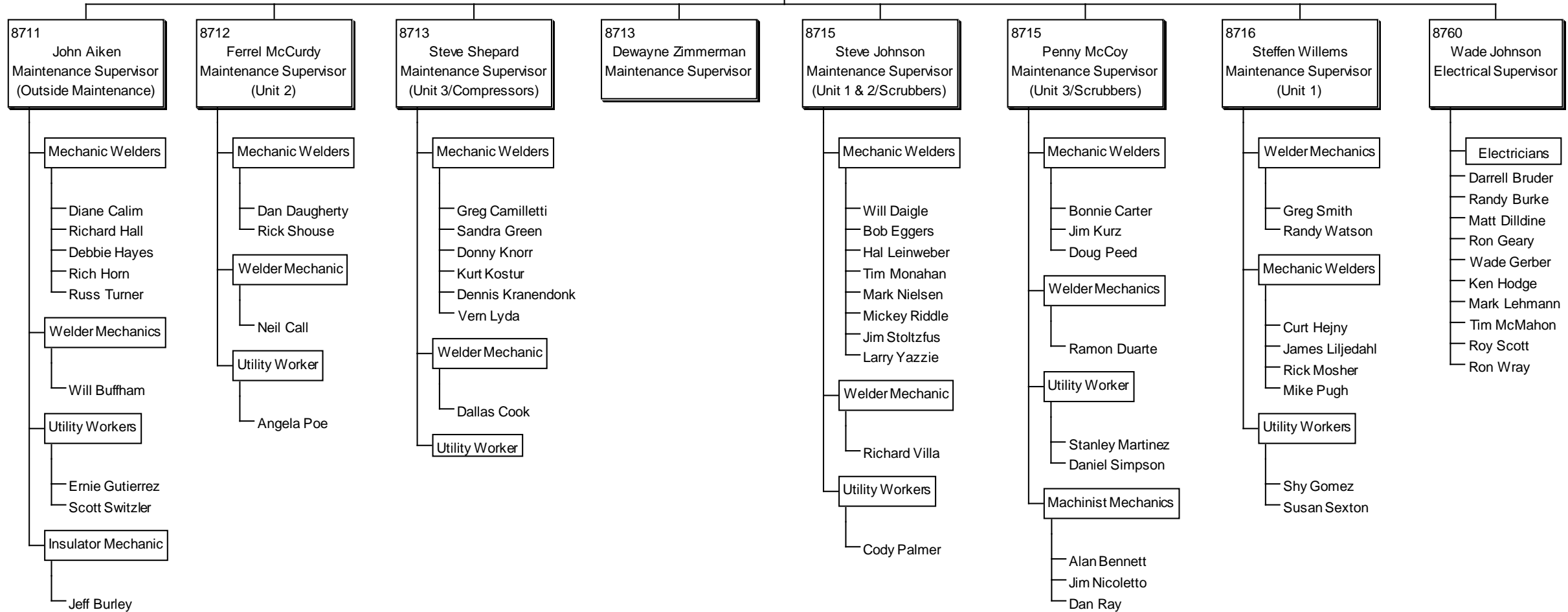
CRAIG STATION  
ORGANIZATION STRUCTURE  
JULY, 2007



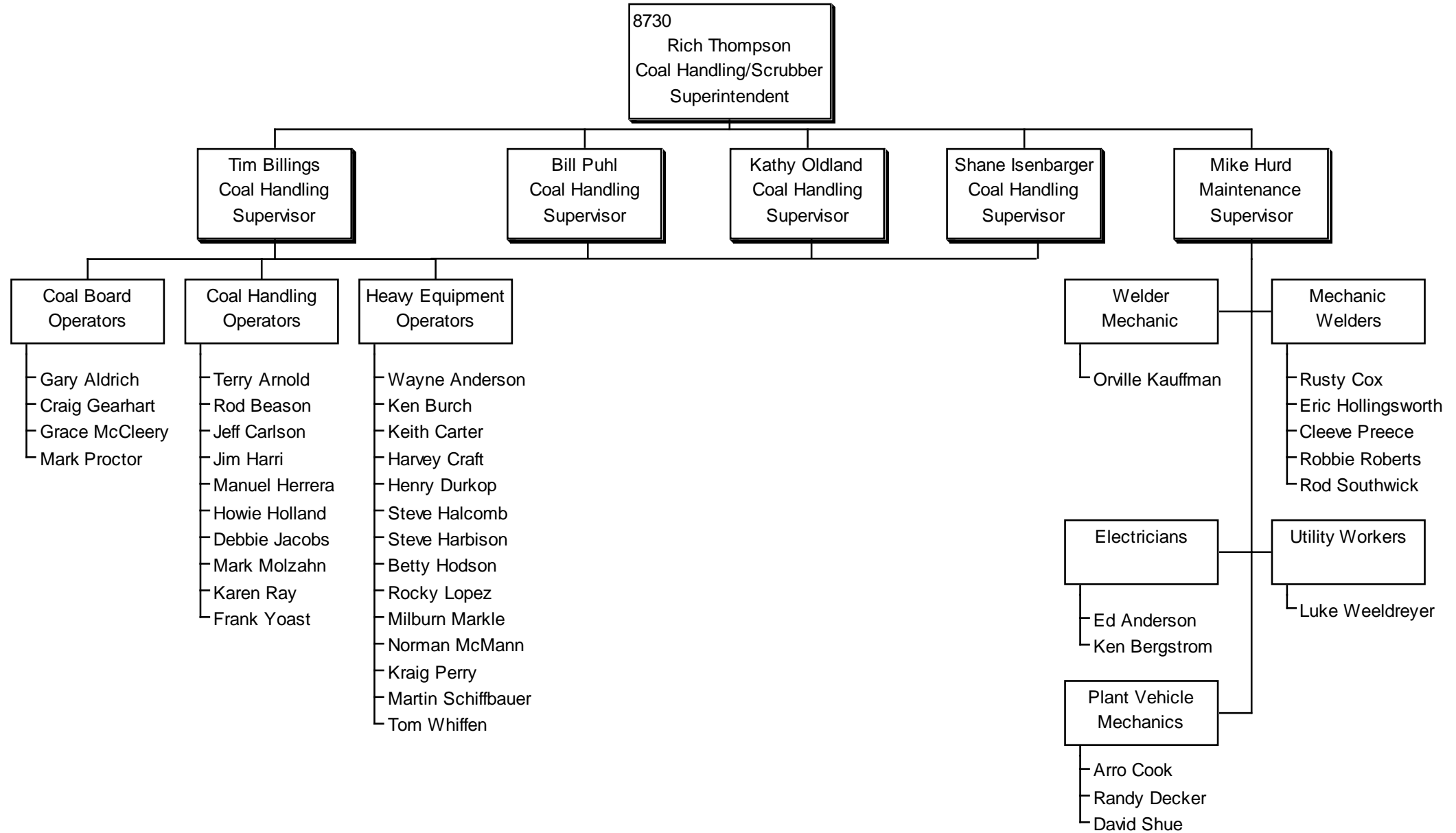
Posted Positions at Craig Station  
 10 Utility Workers - to fill future vacancies  
 2 Scrubber Operators  
 1 Scrubber Board Operator  
 1 Heavy Equipment Operator  
 5 Mechanic Welders

CRAIG STATION  
ORGANIZATION STRUCTURE  
JULY, 2007

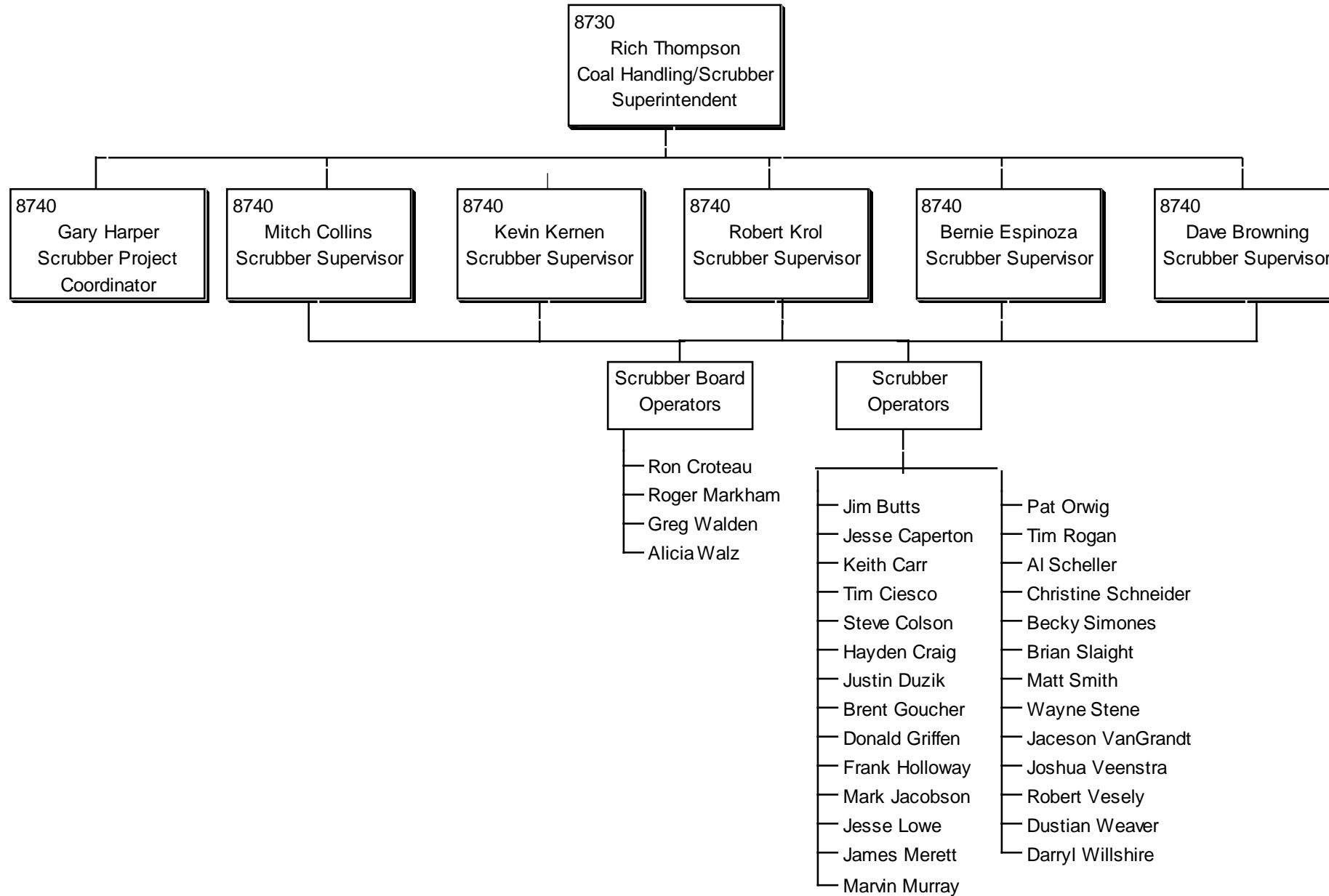
8710  
Rick Johnson  
Maintenance  
Superintendent



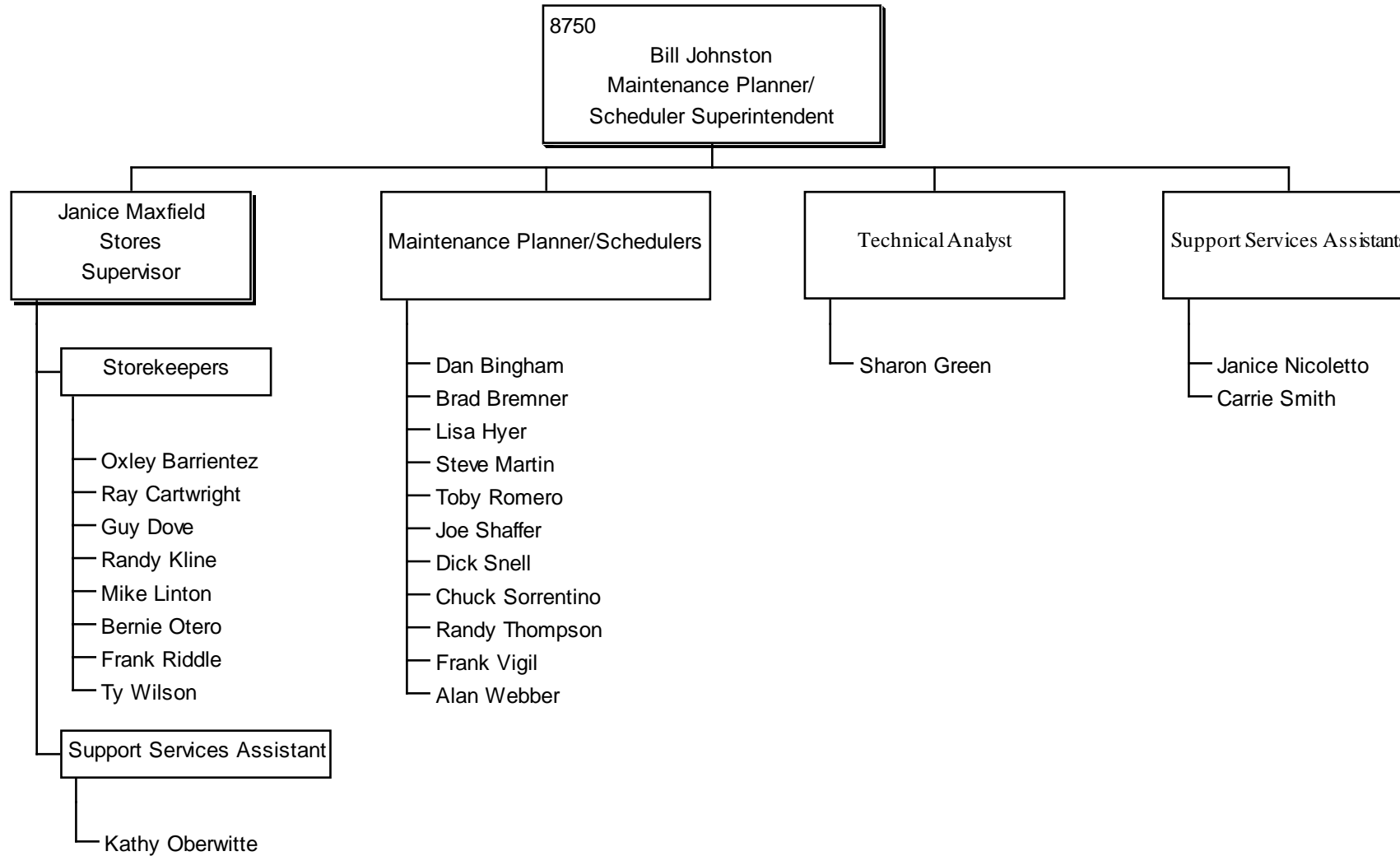
CRAIG STATION  
ORGANIZATION STRUCTURE  
JULY, 2007



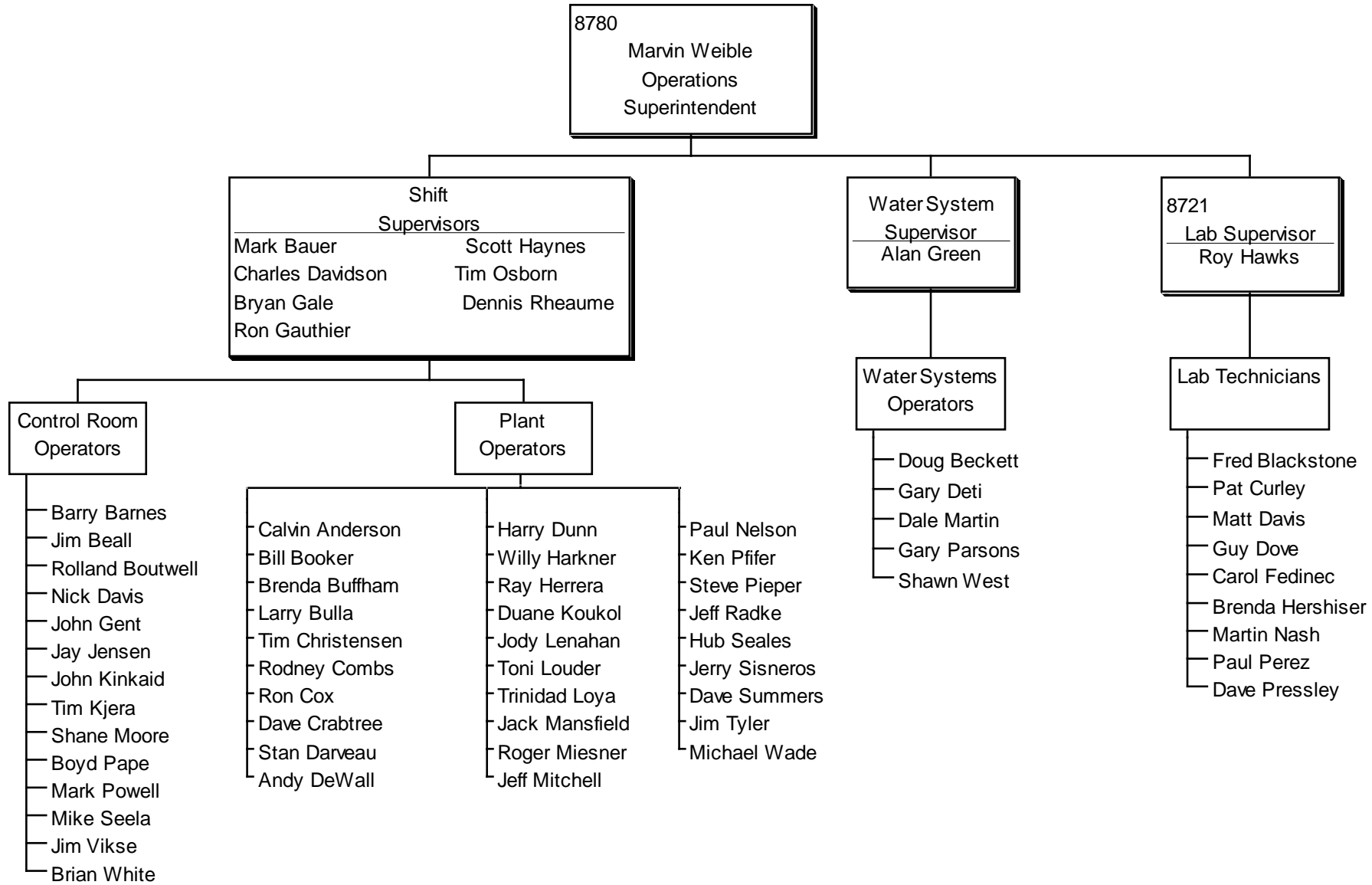
CRAIG STATION  
 ORGANIZATION STRUCTURE  
 JULY, 2007



CRAIG STATION  
ORGANIZATION STRUCTURE  
JULY, 2007

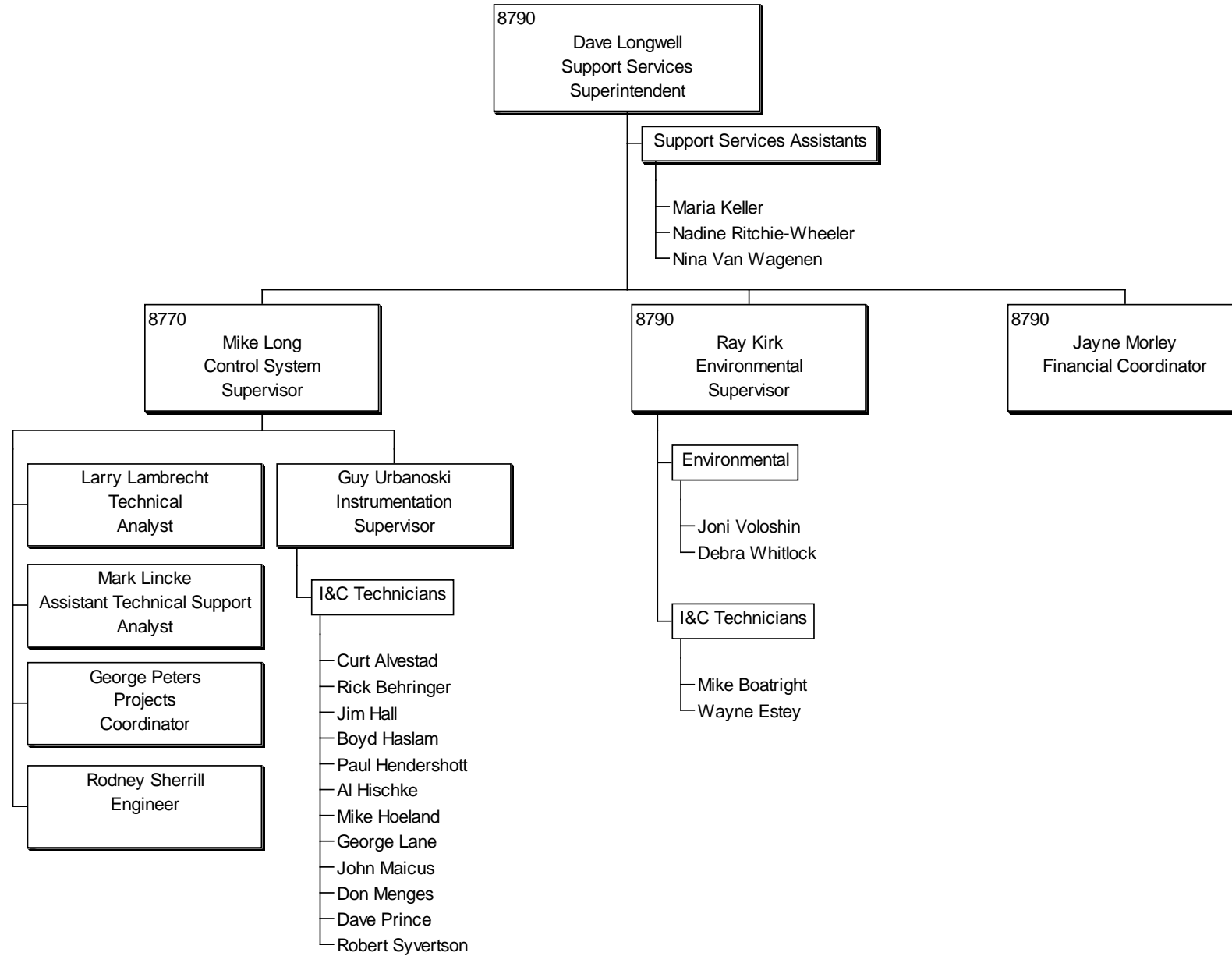


CRAIG STATION  
ORGANIZATION STRUCTURE  
JULY, 2007

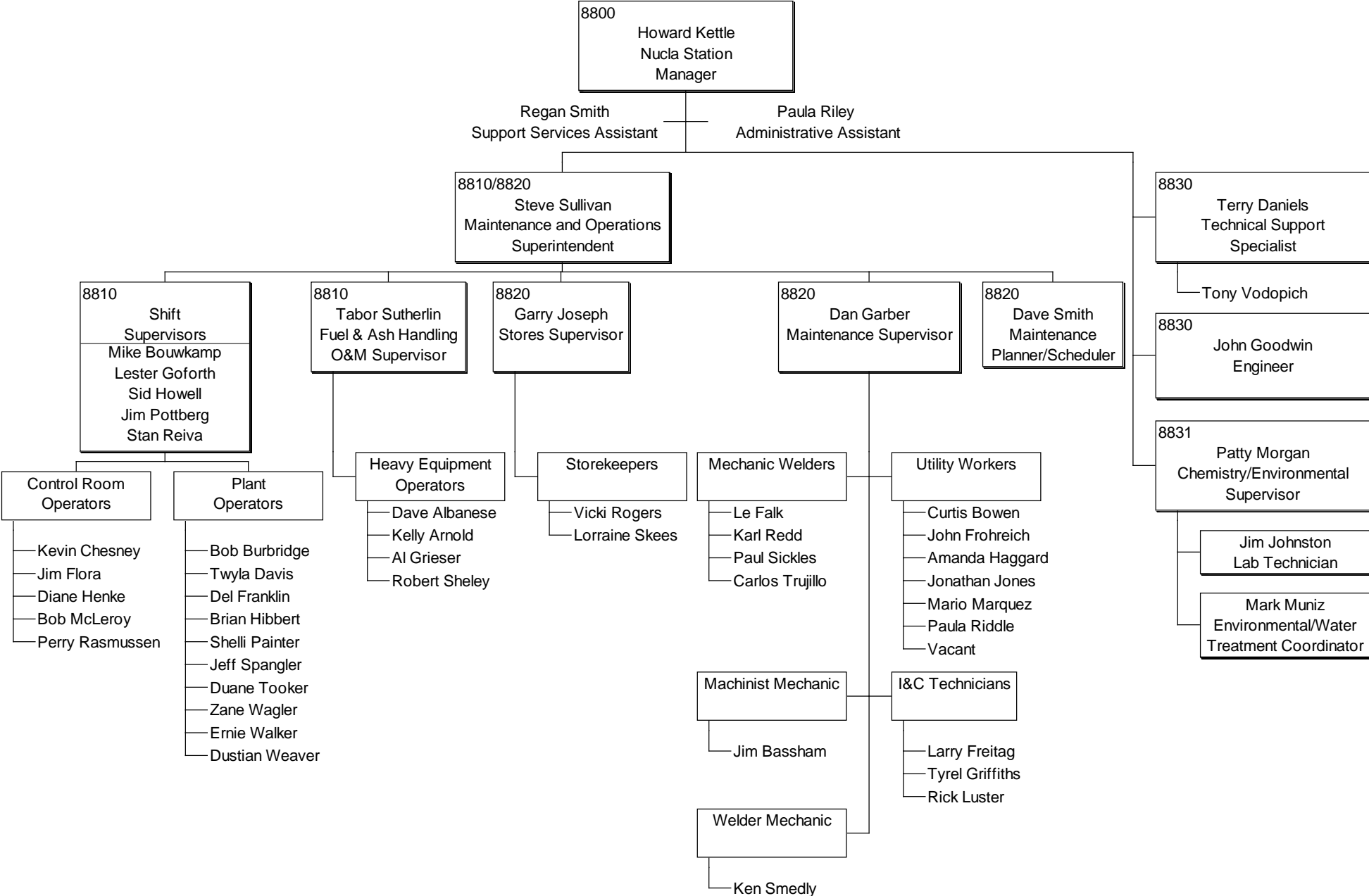




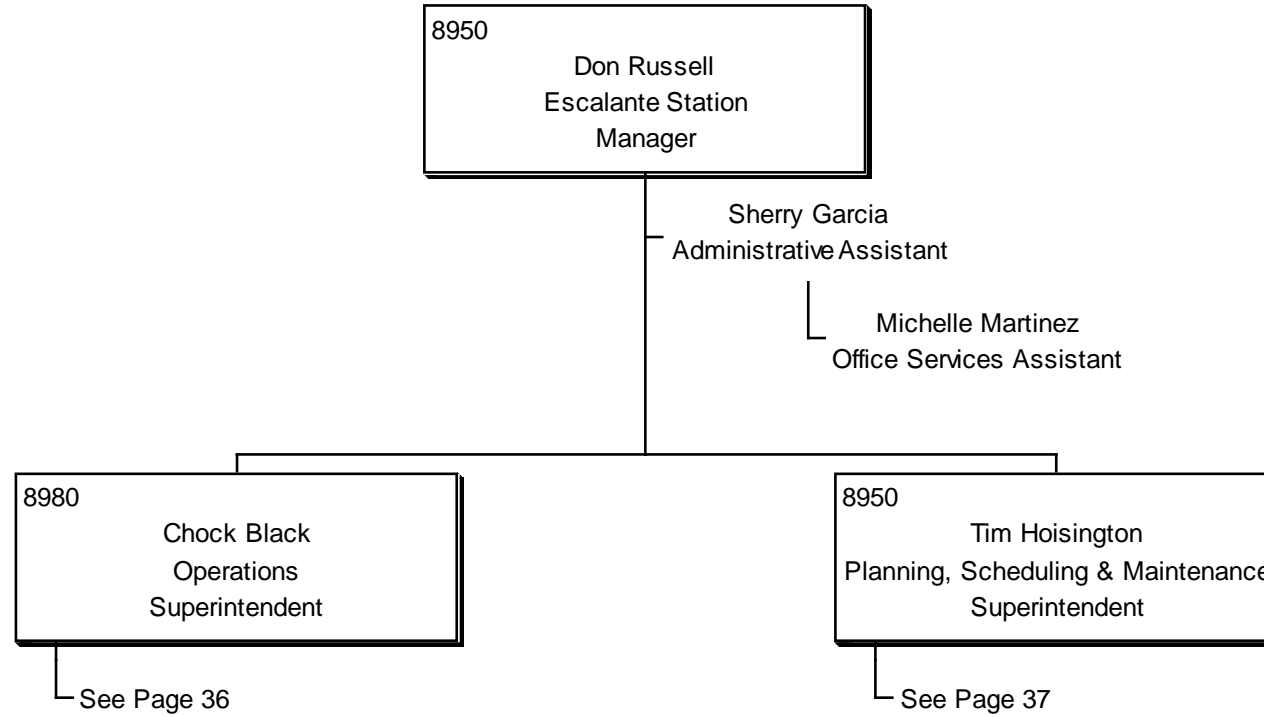
# CRAIG STATION ORGANIZATION STRUCTURE JULY, 2007



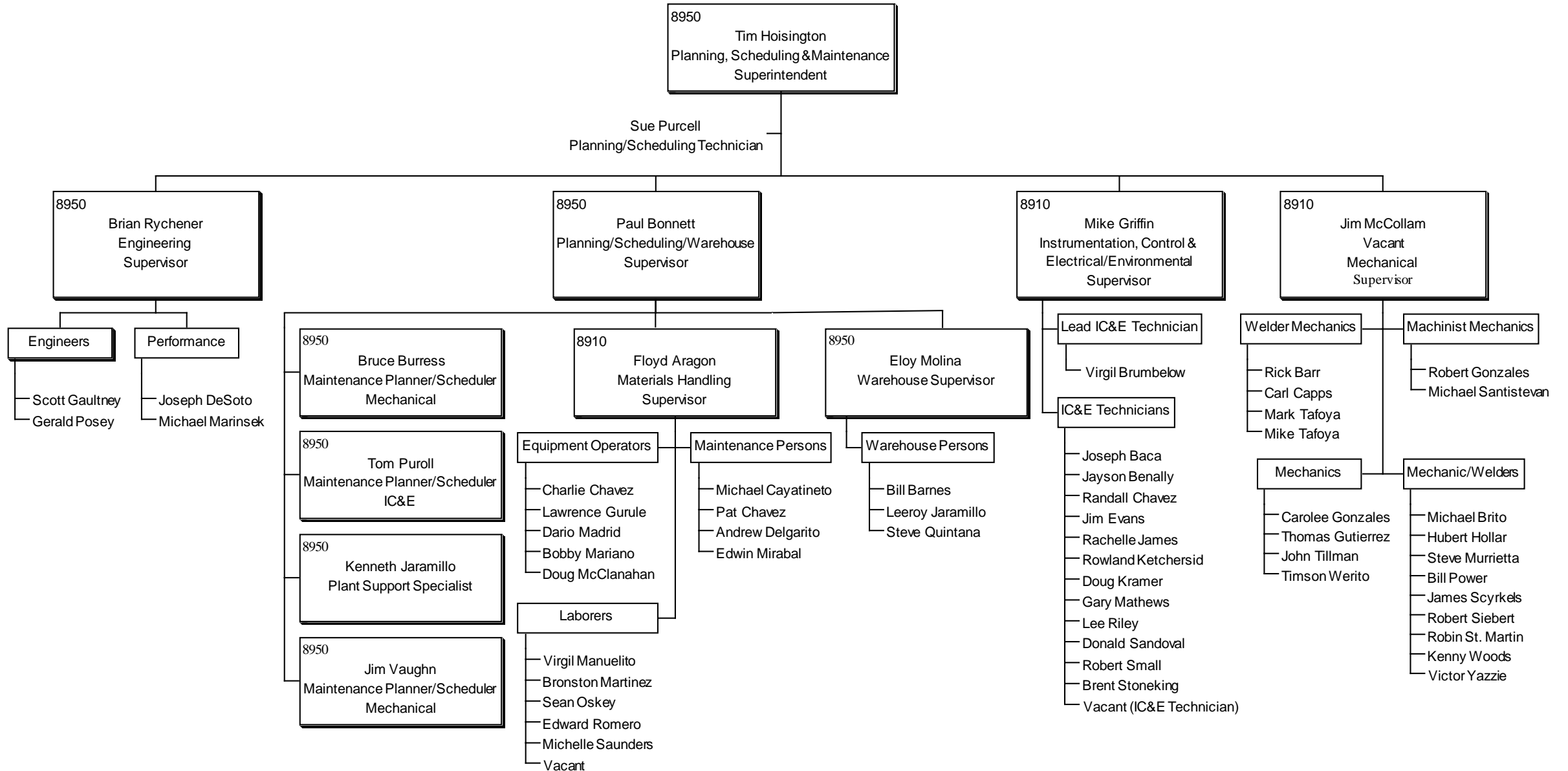
# NUCLA STATION ORGANIZATION STRUCTURE JULY, 2007



ESCALANTE STATION  
ORGANIZATION STRUCTURE  
JULY, 2007



# ESCALANTE STATION ORGANIZATION STRUCTURE JULY, 2007



ESCALANTE STATION  
 ORGANIZATION STRUCTURE  
 JULY, 2007

