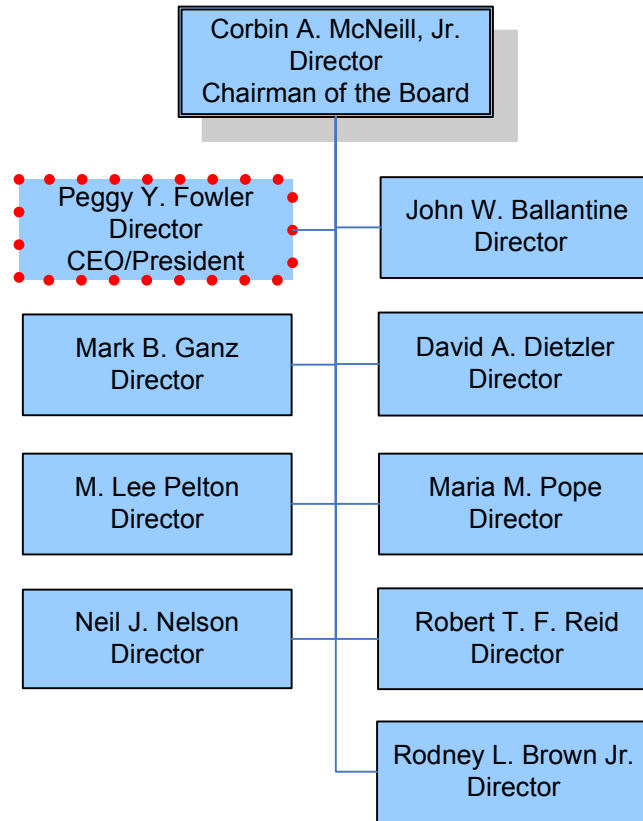


Portland General Electric Co.

Board of Directors

As of 7/30/2008



KEY:

Transmission Function Employees

Marketing & Sales Employees

Shared Employees

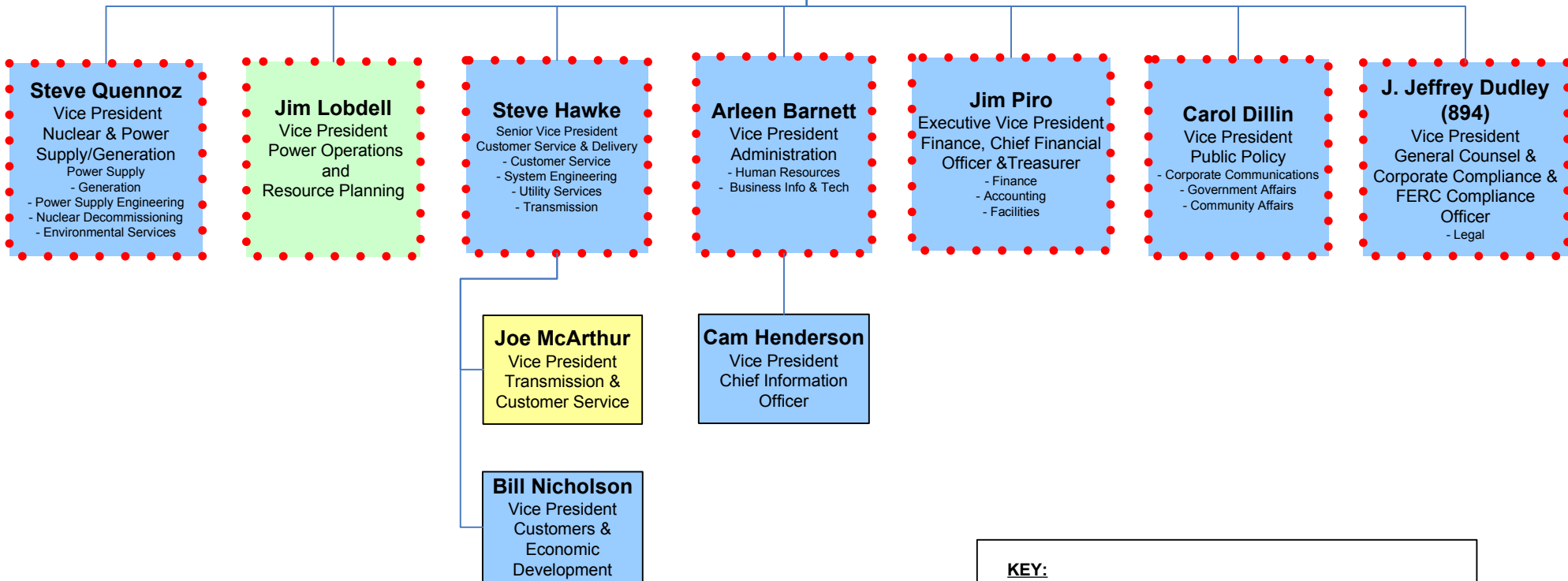
Portland General Electric Co.

Officers

As of 7/30/2008

Peggy Fowler (191)
CEO/President

Mary Trosper
Executive Secretary



KEY:

Transmission Function Employees

Marketing & Sales Employees

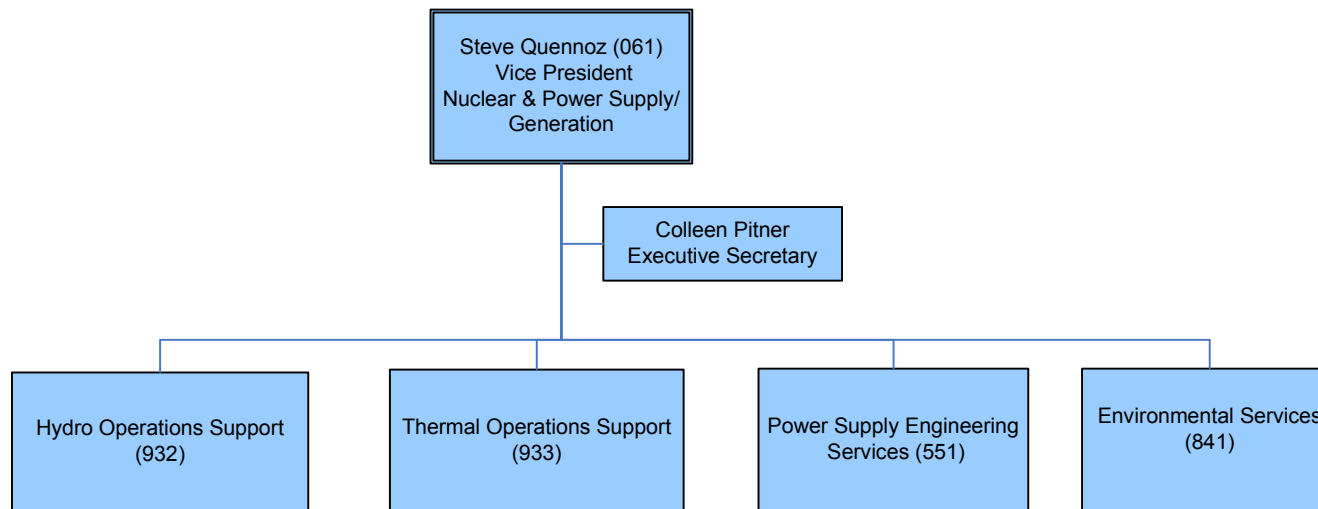
Shared Employees

Portland General Electric Co.

Nuclear & Power Supply/Generation

As of 7/30/2008

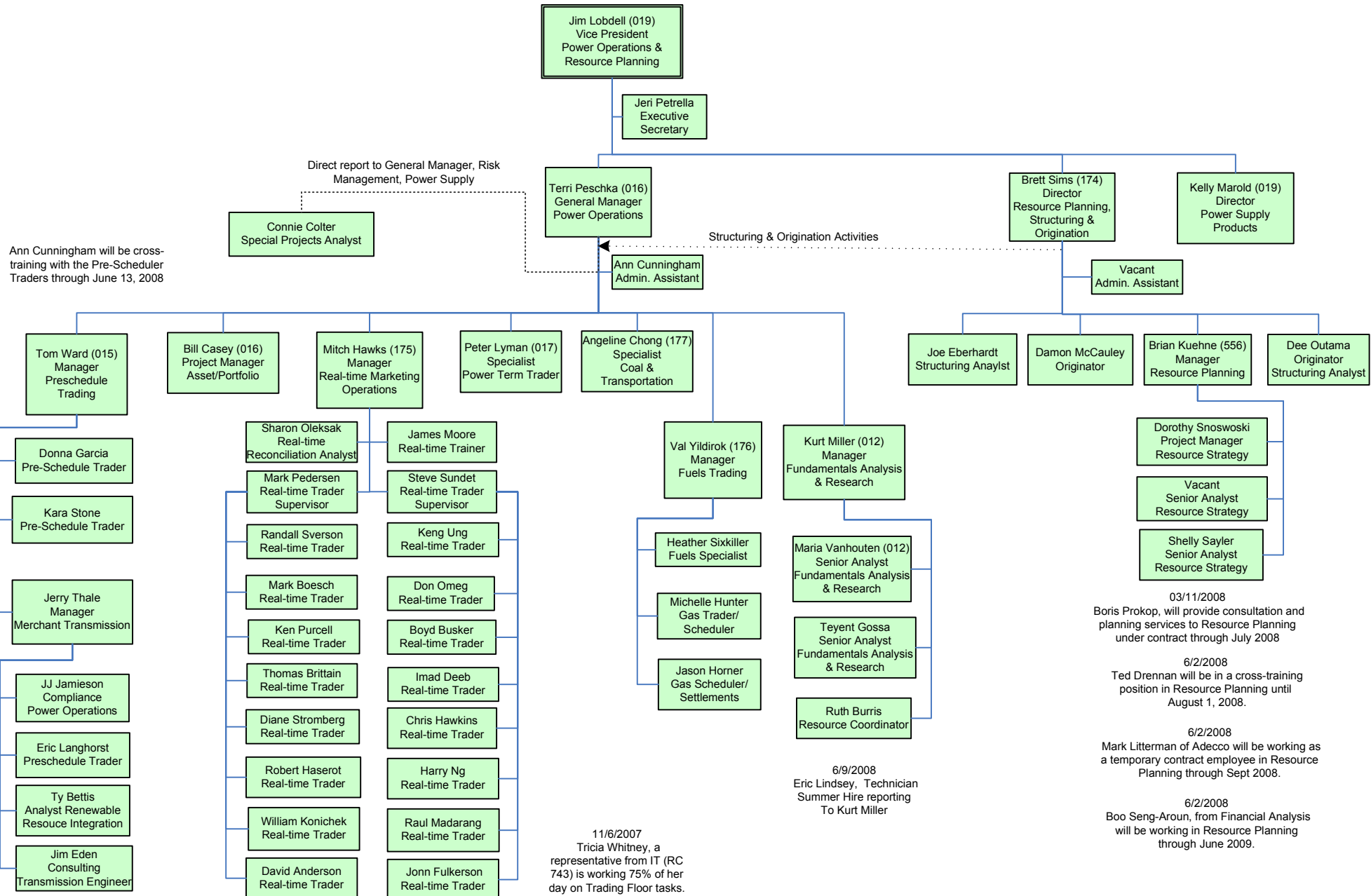
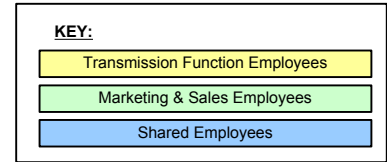
| |
|---------------------------------|
| KEY: |
| Transmission Function Employees |
| Marketing & Sales Employees |
| Shared Employees |



Portland General Electric Co.

Power Operations & Resource Planning

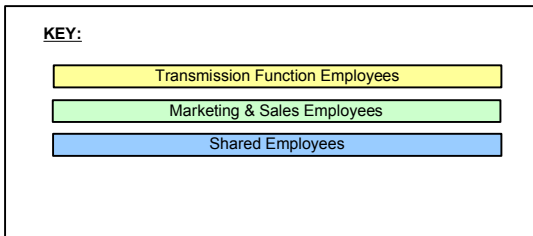
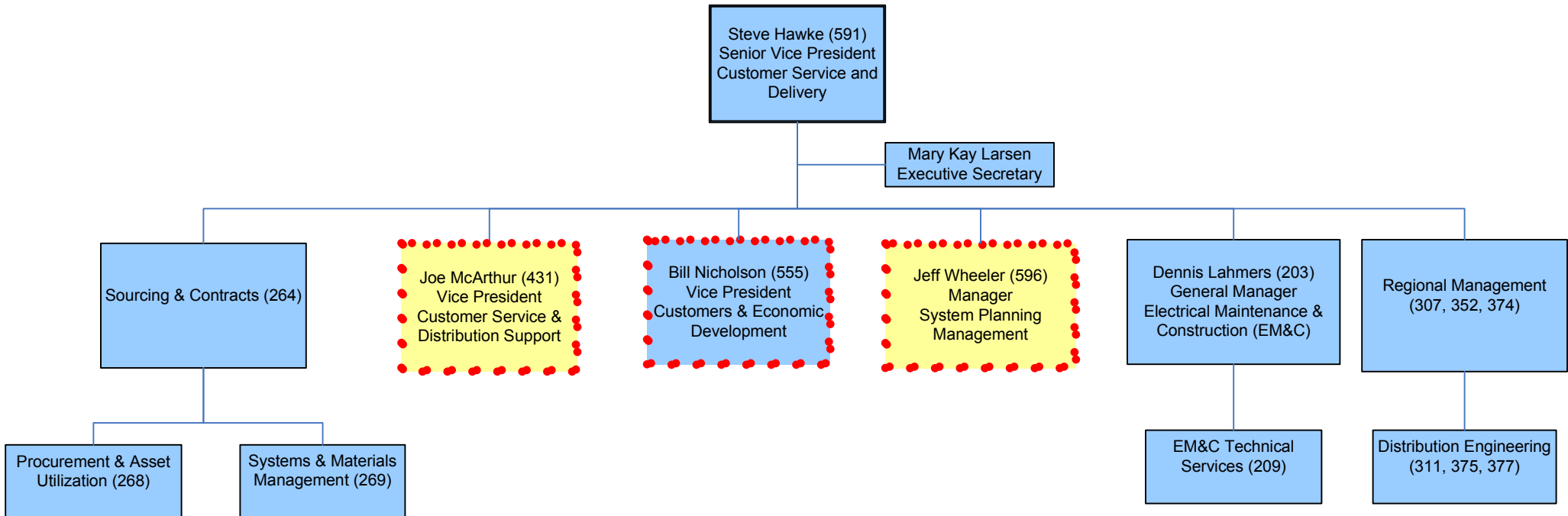
As of 7/30/2008



Portland General Electric Co.

Customer Service and Delivery

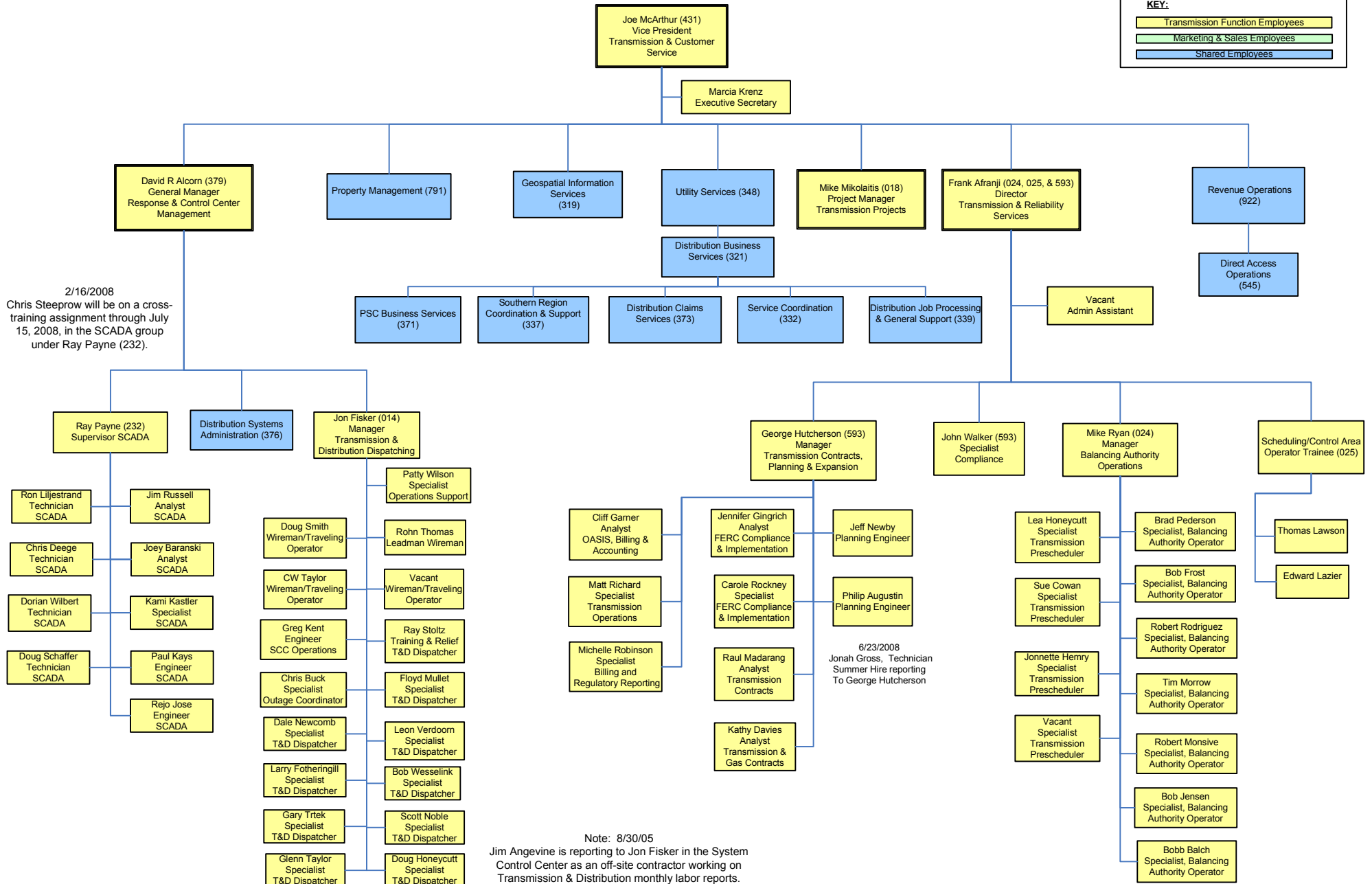
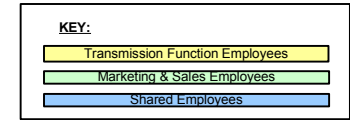
As of 7/30/2008



Portland General Electric Co.

Distribution

As of 7/30/2008



Portland General Electric Co.

Business & Governmental Customer & Economic Development

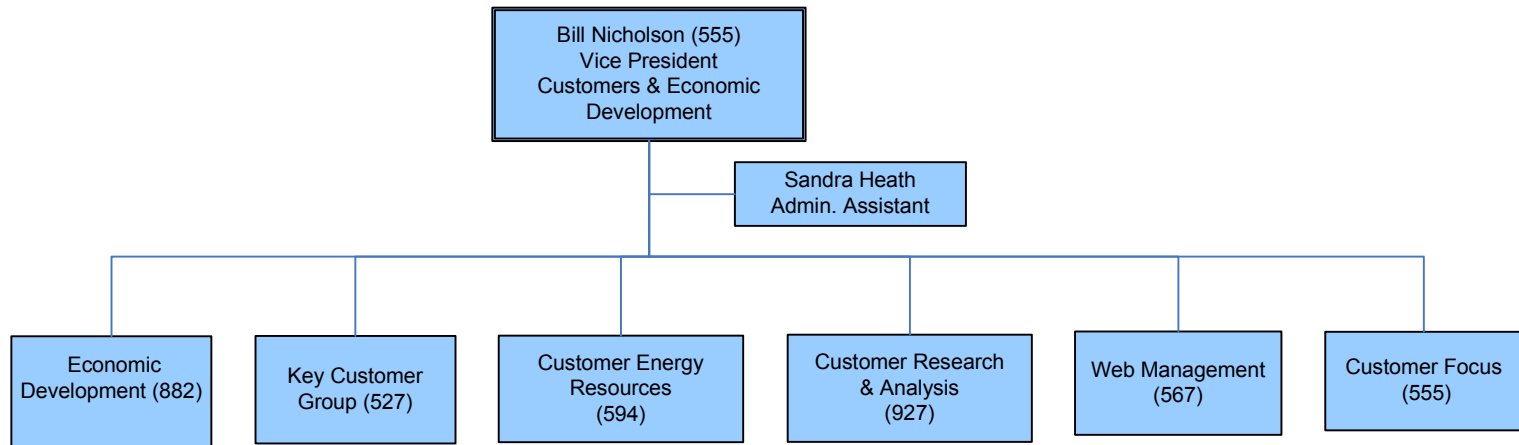
As of 7/30/2008

KEY:

Transmission Function Employees

Marketing & Sales Employees

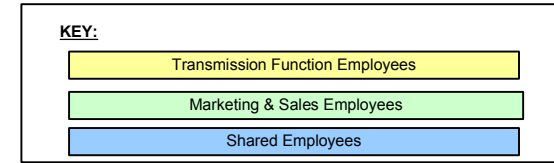
Shared Employees



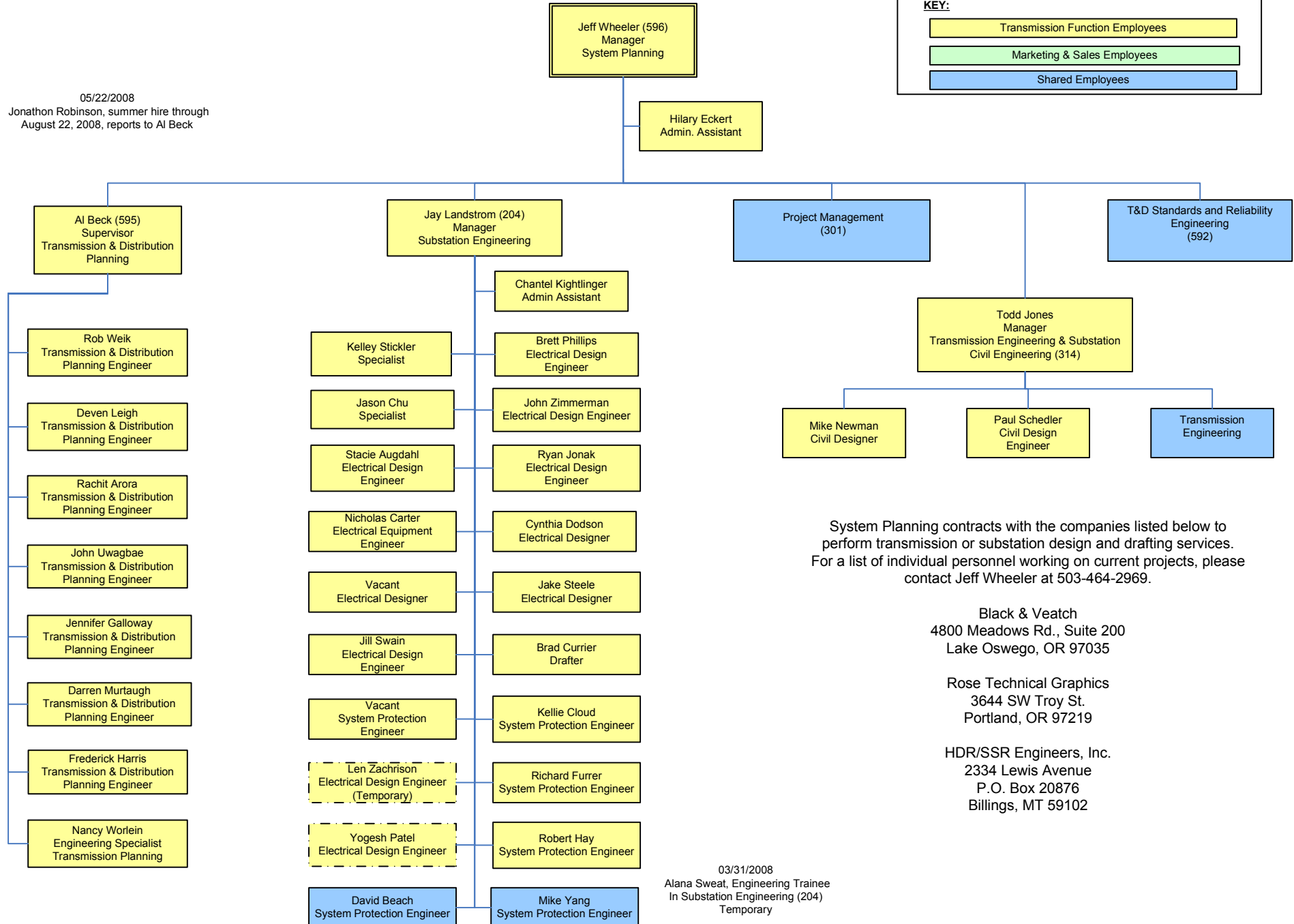
Portland General Electric Co.

System Planning

As of 7/30/2008



05/22/2008
Jonathon Robinson, summer hire through
August 22, 2008, reports to Al Beck



System Planning contracts with the companies listed below to perform transmission or substation design and drafting services. For a list of individual personnel working on current projects, please contact Jeff Wheeler at 503-464-2969.

Black & Veatch
4800 Meadows Rd., Suite 200
Lake Oswego, OR 97035

Rose Technical Graphics
3644 SW Troy St.
Portland, OR 97219

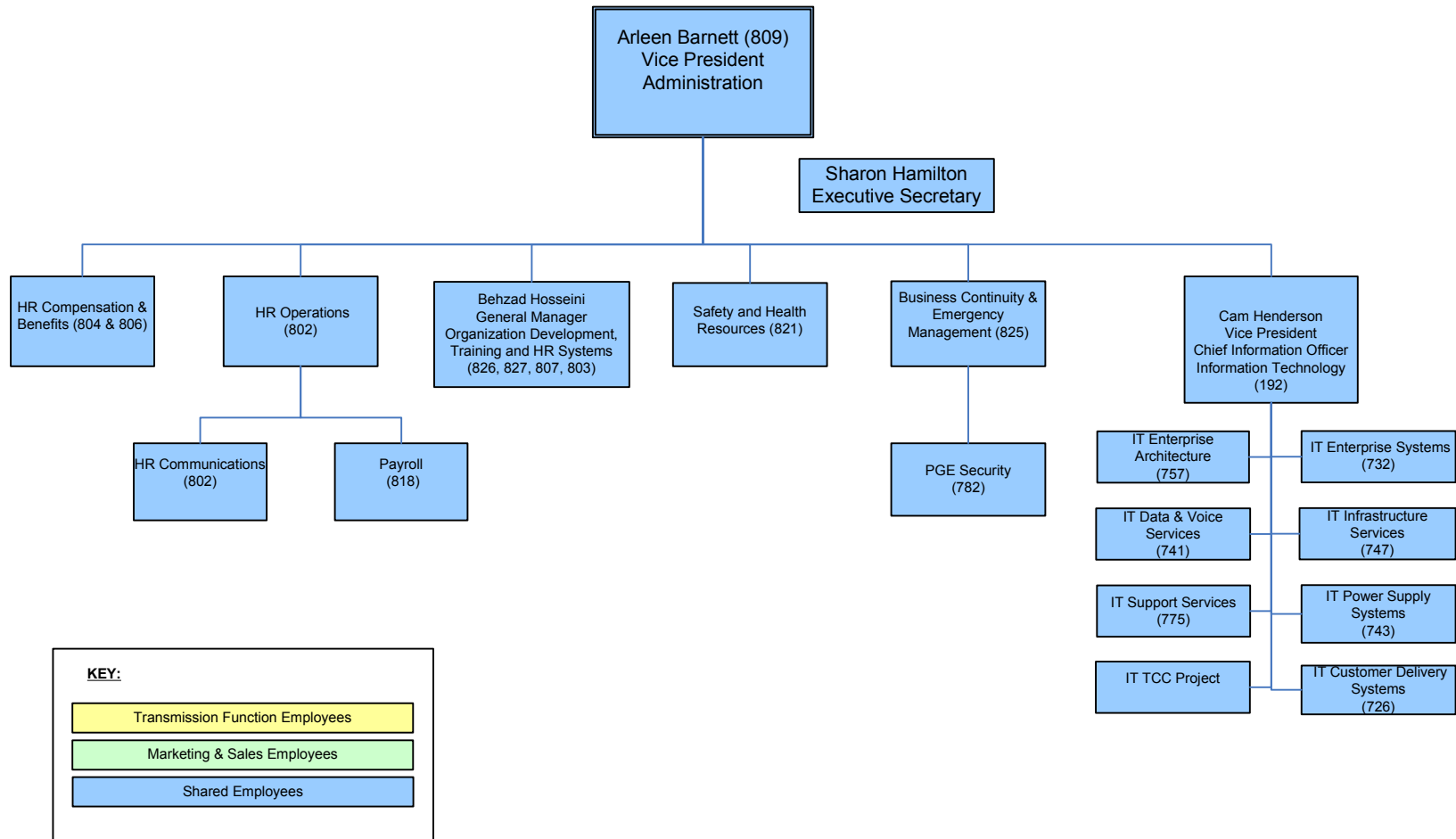
HDR/SSR Engineers, Inc.
2334 Lewis Avenue
P.O. Box 20876
Billings, MT 59102

03/31/2008
Alana Sweat, Engineering Trainee
In Substation Engineering (204)
Temporary

Portland General Electric Co.

Human Resources and Information Technology

As of 7/30/2008

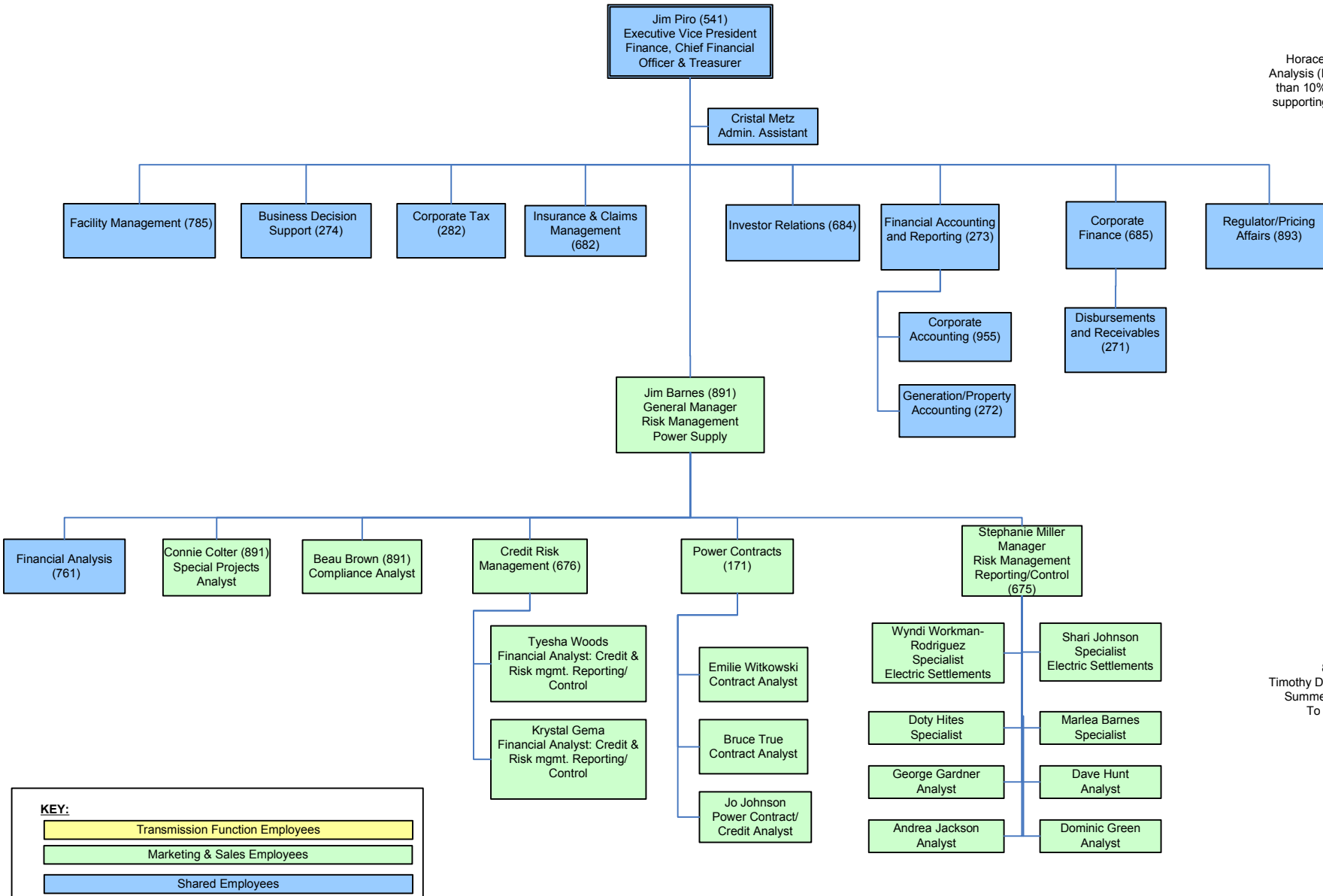


Portland General Electric Co.

Finance

As of 7/30/2008

NOTE: 11/08/04
Horace Tso, an Analyst from Financial Analysis (RC 761) works approximately less than 10% of his time on the Trading Floor supporting Fundamentals Market Modeling

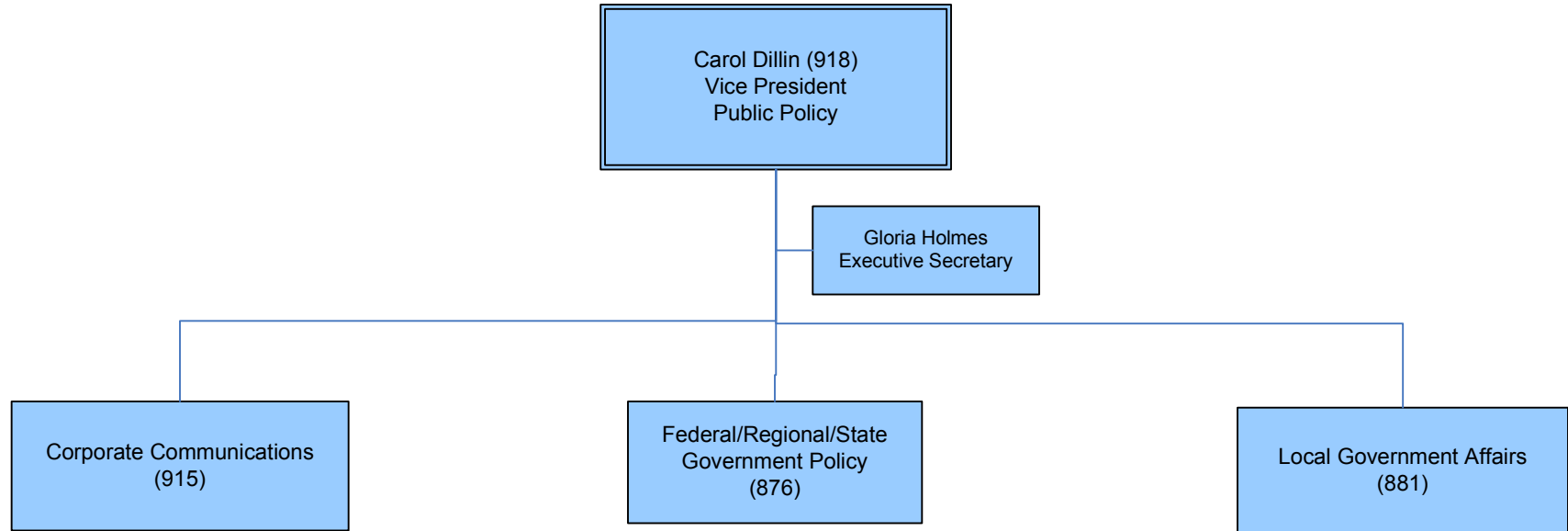


8/6/2008
Timothy Dundon, Technician
Summer Hire reporting
To Jim Barnes

Portland General Electric Co.

Public Affairs / Corporate Services

As of 7/30/2008



KEY:

Transmission Function Employees

Marketing & Sales Employees

Shared Employees

Portland General Electric Co.

Legal

As of 7/30/2008

