

FINAL  
FACILITY STUDY

Poudre Substation  
2007-T9

February 8, 2008

[Revised 3 Apr 08, for public posting]

Prepared by: Martin Baek



# Facilities Study for 2007-T9 Poudre Substation

## Background

2007-T9 on behalf of their customer per Letter agreement No. 07-RMR-1711 Facilities Study Agreement dated January 8, 2008, requested a Facilities Study for changing the delivery point voltage at Western's Poudre Substation from 69-kV to 115-kV, and allow 2007-T9 to install a 115/12.47-kV transformer and associated equipment in place of the existing 115/69-kV transformer and 69-kV equipment.

It was determined by Western that a System Impact Study (SIS) was not needed, so therefore not completed under this Facility Study.

Western owns, operates, and maintains Poudre Substation. Currently 2007-T9 takes delivery at 69-kV through Western's 115/69-kV transformer KY1A (Attachment A).

## Project Description

At 2007-T9's request Western studied the feasibility of moving the delivery point voltage at Poudre Substation from 69-kV to 115-kV (Attachment B) and allow 2007-T9 to install a 115/12.47-kV transformer and associated equipment in place of the existing 115/69-kV transformer and 69-kV equipment.

At 2007-T9 sole expense, the following modifications would be required at Poudre Substation:

1. Demolition and removal of the existing 69-kV section
  - a. Rigid Bus
  - b. Power Circuit breakers (PCB154)
  - c. Switches (153,155,159)
2. Removal of Western transformers KY1A and KW1A
  - a. Foundations
  - b. Associated Electrical Equipment
3. Construction and Installation of new 2007-T9 owned equipment
  - Transformer KY1A 115/12.47-kV
  - Station Service Transformer 7200V -120/240V

## Western's Requirements

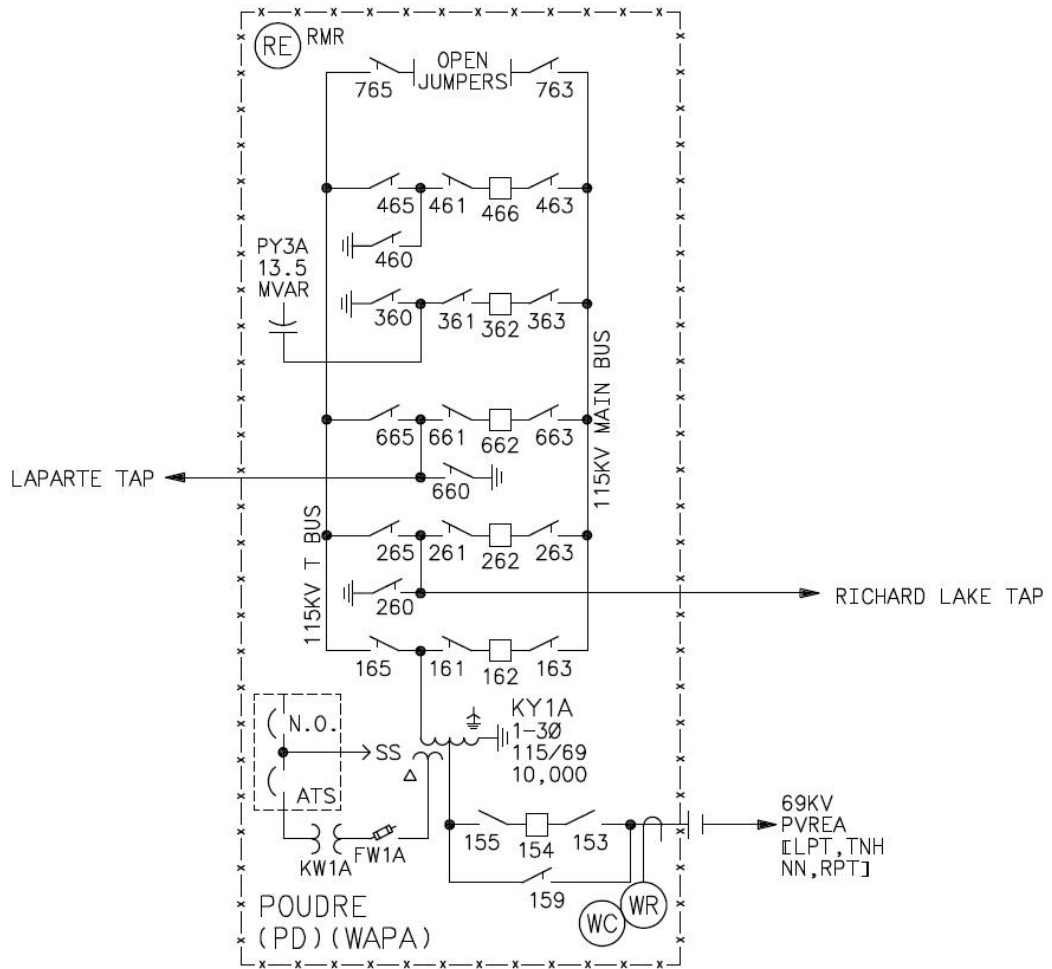
Western preformed this Facilities Study to specify the scope and cost worked needed to implement the customers request. 2007-T9 has requested to perform all work associated with this project.

Execution of a power marketing contract specifying work scope, cost and materials and services being provided will be required to be executed prior to work being performed.

**Cost**

2007-T9 provided Western an estimated cost to perform the work outlined above to be \$470,000.

# Attachment A



# Attachment B

